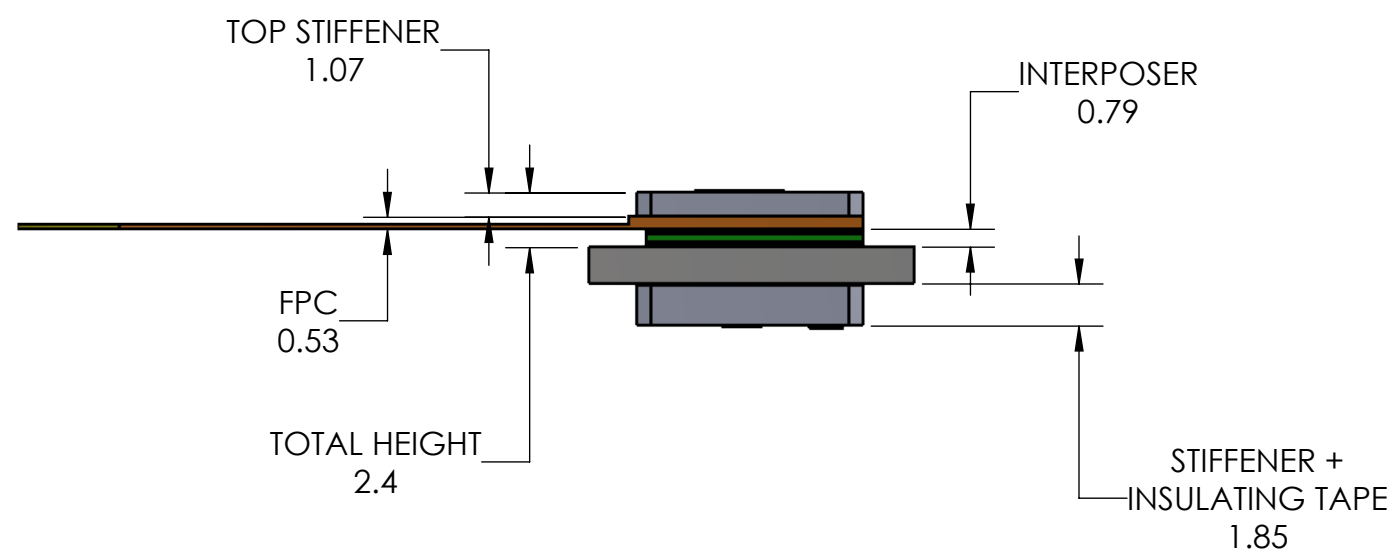
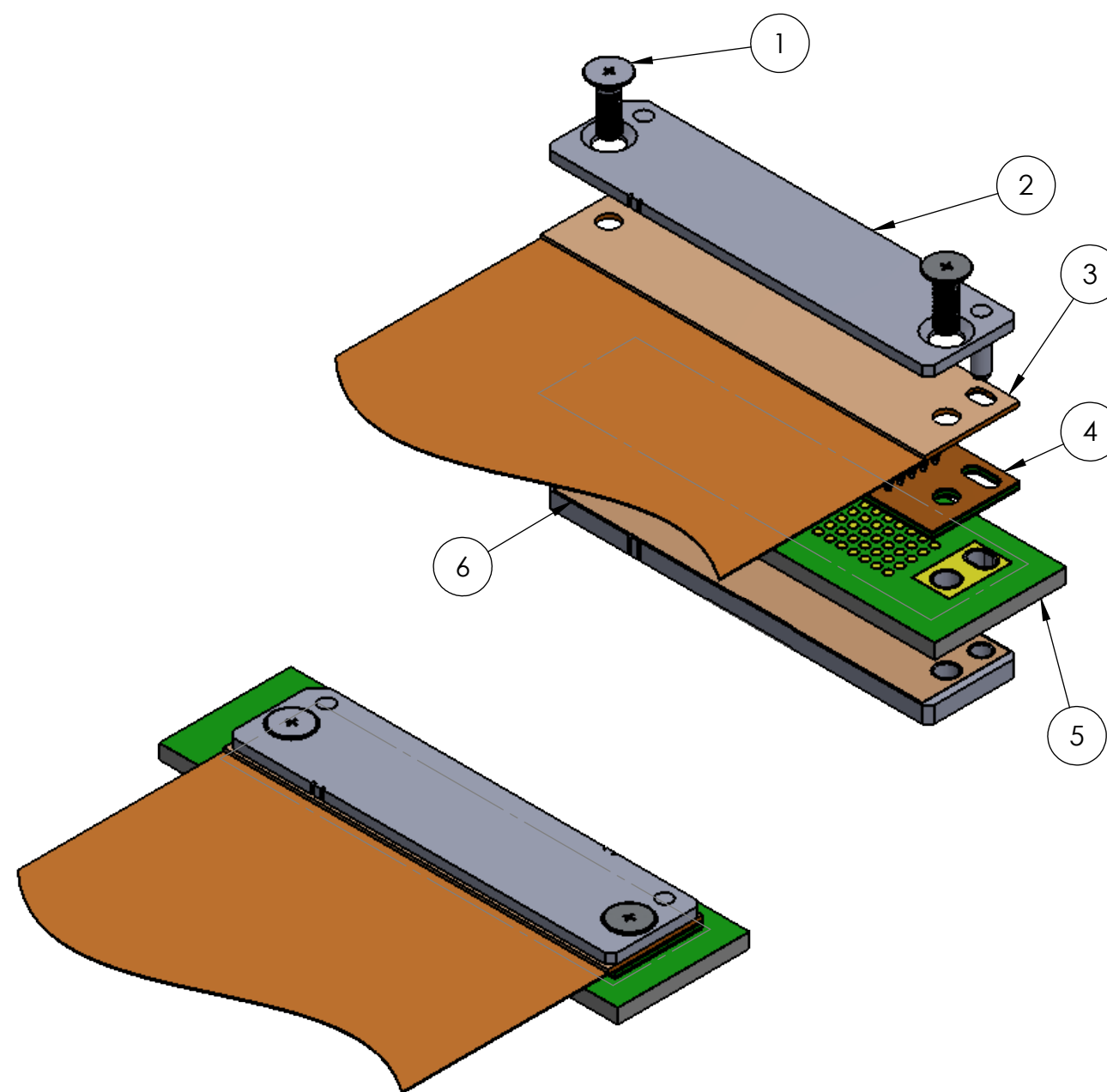
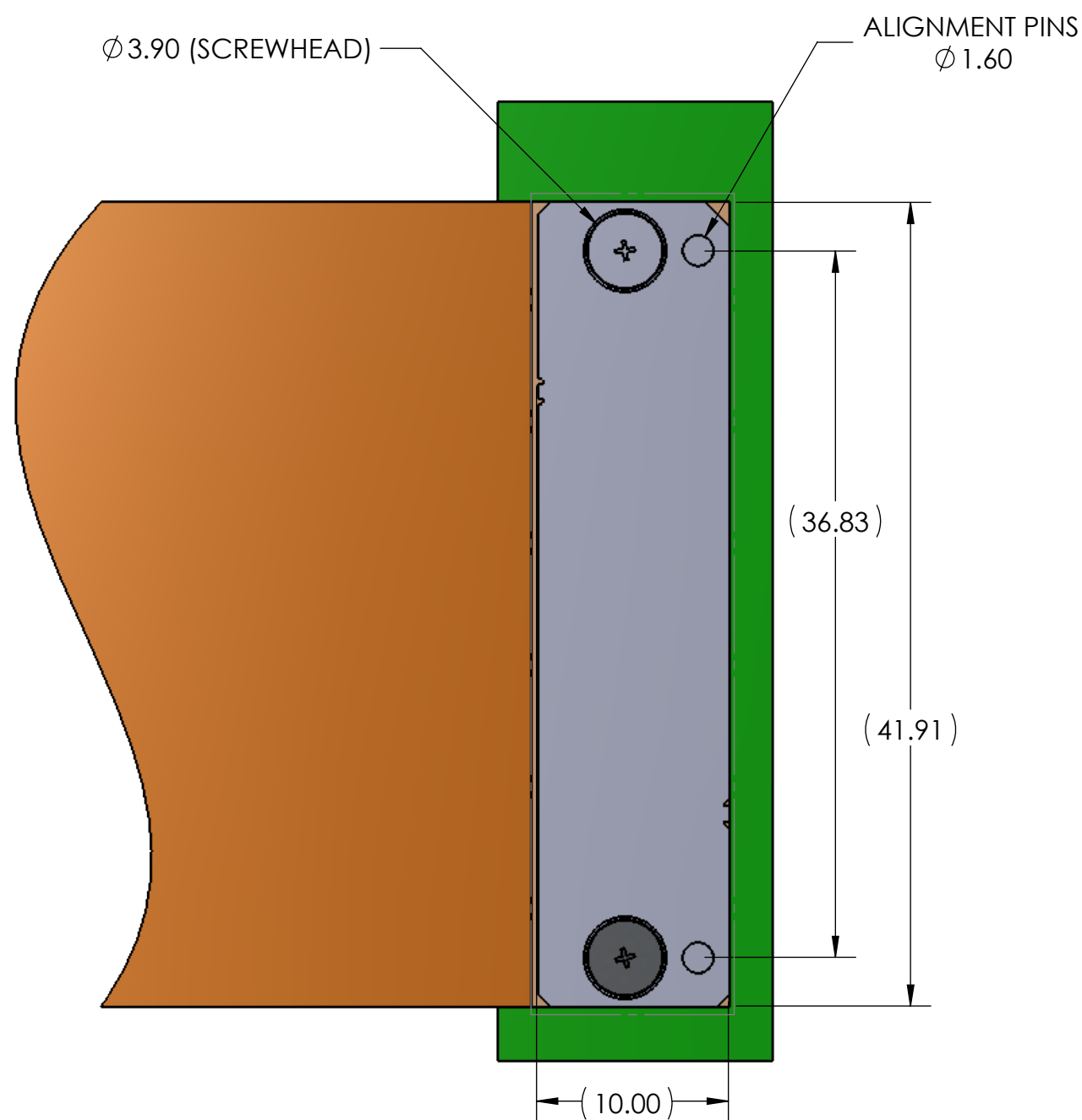


- PROPRIETARY INFORMATION -
NO USE OR REPRODUCTION MAY BE MADE OF
THIS DOCUMENT WITHOUT EXPRESS WRITTEN
PERMISSION OF NEOCONIX.

REVISIONS				
REV	ECN	DESCRIPTION	DATE	APPROVED
A	1249	PRODUCTION RELEASE	08-01-2019	WES TAO
B	1257	INTERPOSER WIDTH REDUCED 0.3	08-30-2019	WES TAO
C	1285	INCREASE MOUNTING HOLES: STIFFENER BREAK TABS	03-01-2021	WES TAO



ITEM	DESCRIPTION	NEOCONIX P/N	QTY PER ASSY
1	M2 FLATHEAD SCREW	VARIOUS *	2
2	TOP STIFFENER	B01-000623-Lxxx *	1
3	FPC	CUSTOM	1
4	INTERPOSER	SPH1-F120A	1
5	PCB	CUSTOM	1
6	BOTTOM STIFFENER	B01-000627	1

* SEE AS-000017 FOR VARIOUS PART NUMBER
OPTIONS BASED ON ASSEMBLY THICKNESS STACKUP.
ALL ITEMS ORDERED SEPARATELY.

neoconix
4020 MOORPARK AVENUE #108
SAN JOSE, CA 95117 USA
TEL: 408-530-9393 FAX: 408-530-9383

DIMENSIONS ARE IN
MM [INCH]
.X ±
.XX ±
.XXX ±
ANGLE: NO DEC ±
.X ±
.XX ±

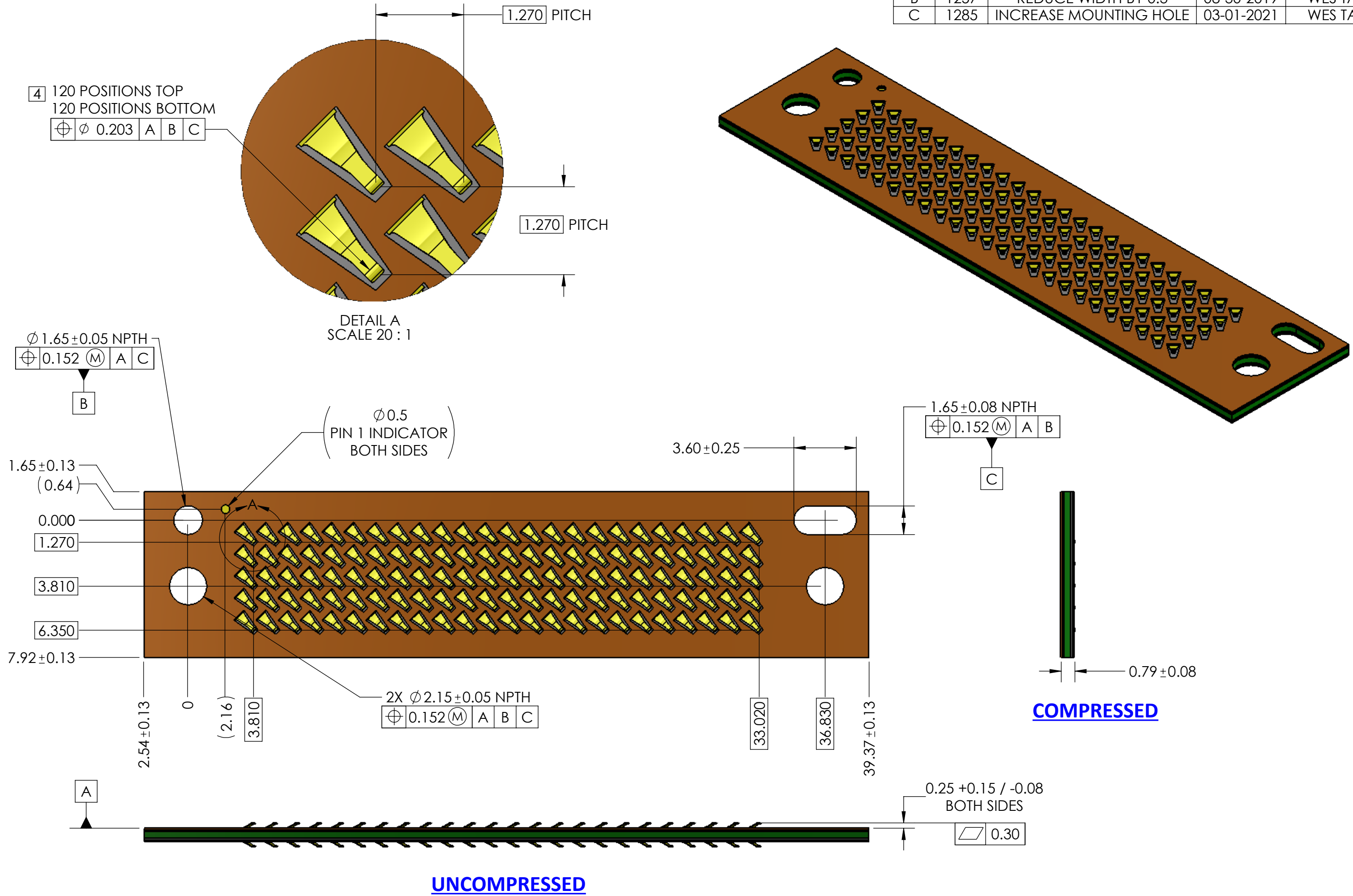
MATERIAL: SEE NOTES
FINISH:
DRAWN BY: W.B.LONG 08-01-2019
CHECKED BY:
ENGR APPR:
MFG APPR:
QA APPR:

TITLE:
**SPH1 ASSEMBLY
120 POSITIONS LGA-LGA**
SIZE DWG NUMBER:
B+ SPH1-F120A-ASY
SCALE: 3:1 SHEET 1 OF 4

REV
C

- PROPRIETARY INFORMATION -
NO USE OR REPRODUCTION MAY BE MADE OF
THIS DOCUMENT WITHOUT EXPRESS WRITTEN
PERMISSION OF NEOCONIX.

REVISIONS				
REV	ECN	DESCRIPTION	DATE	APPROVED
A	1249	PRODUCTION RELEASE	08-01-2019	WES TAO
B	1257	REDUCE WIDTH BY 0.3	08-30-2019	WES TAO
C	1285	INCREASE MOUNTING HOLE	03-01-2021	WES TAO



NOTES (UNLESS OTHERWISE SPECIFIED):

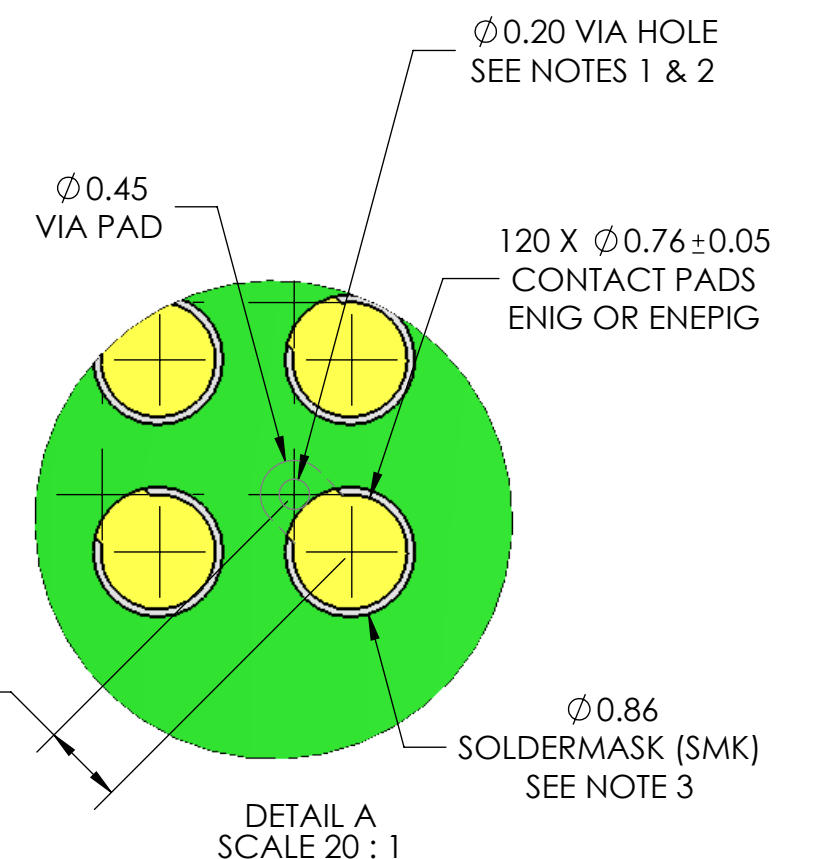
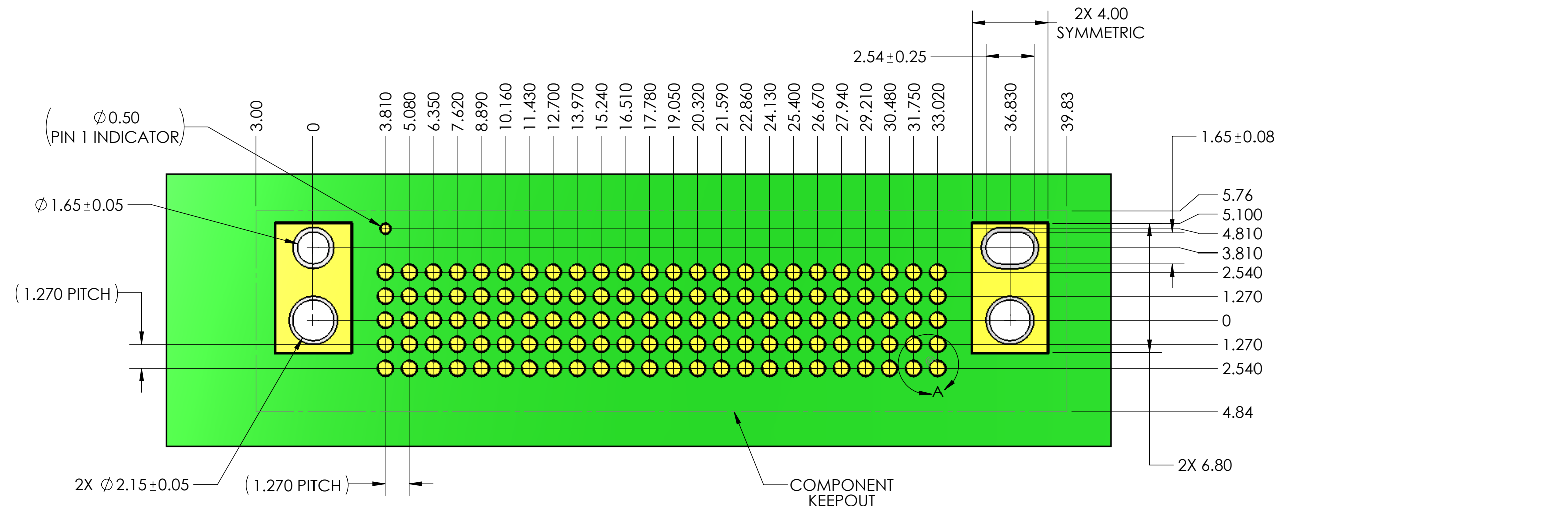
1. INTERPRET DRAWING PER ASME Y14.5M-1994.
2. HALOGEN-FREE PER IPC-4101B.
3. COMPLIANT WITH RoHS DIRECTIVE 2011/65/EU.

4 CENTER MARKS OF CONTACT POSITIONS ARE FOR COMPRESSED STATE

<p>4020 MOORPARK AVENUE #108 SAN JOSE, CA 95117 USA TEL: 408-530-9393 FAX: 408-530-9383</p>	DIMENSIONS ARE IN MM .X \pm 0.13 .XX \pm 0.08 .XXX \pm 0.025 ANGLE: NO DEC \pm 2 DEGREE .X \pm .XX \pm		MATERIAL: SEE NOTES FINISH: DRAWN BY: W.B.LONG 08-01-2019 CHECKED BY: ENGR APPR: MFG APPR: QA APPR:		TITLE: SPH1 INTERPOSER 120 POS LGA - LGA	
	THIRD ANGLE		SIZE B+		DWG NUMBER: SPH1-F120A	
					REV C	
					SCALE: 5:1 SHEET 2 OF 4	

- PROPRIETARY INFORMATION -
NO USE OR REPRODUCTION MAY BE MADE OF
THIS DOCUMENT WITHOUT EXPRESS WRITTEN
PERMISSION OF NEOCONIX.

REVISIONS				
REV	ECN	DESCRIPTION	DATE	APPROVED
A	1249	PRODUCTION RELEASE	08-01-2019	WES TAO
B	1257	INTERPOSER WIDTH REDUCED 0.3	08-30-2019	WES TAO
C	1285	INCREASE MOUNTING HOLE	03-01-2021	WES TAO

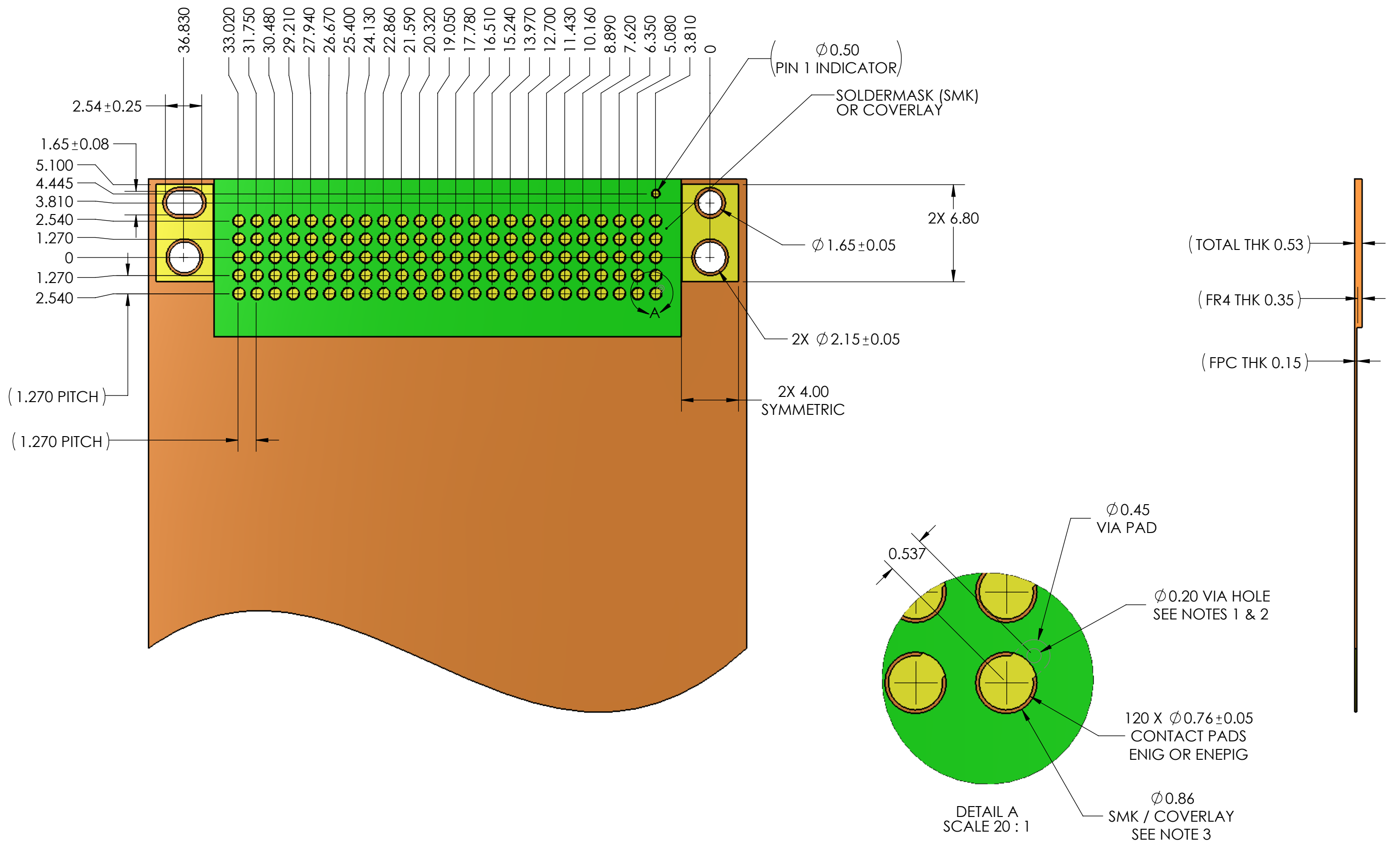


- NOTES:
- IT IS ACCEPTABLE TO ROTATE THE POSITION OF THE VIAS AS NEEDED.
 - IF THE VIA NEEDS TO BE LOCATED WITHIN THE 0.76MM PAD DIAMETER, IT MUST BE FILLED, PLATED, AND PLANARIZED WITH 25UM MAX DIMPLE.
 - SOLDERMASK APPLICATION IN THE ARRAY AREA IS OPTIONAL. IF APPLIED, IT SHALL NOT PROTRUDE MORE THAN 0.03MM ABOVE THE SURFACE OF THE MATING PADS.

<p>4020 MOORPARK AVENUE #108 SAN JOSE, CA 95117 USA TEL: 408-530-9393 FAX: 408-530-9383</p>	DIMENSIONS ARE IN MM .X ± 0.13 .XX ± 0.08 .XXX ± 0.025		MATERIAL: SEE NOTES FINISH:		TITLE: RECOMMENDED PCB LAYOUT SPH1-F120A	
	ANGLE: NO DEC ± 1 .X ± 0.5 .XX ± 0.25		DRAWN BY: W.B.LONG 08-01-2019		SIZE: B+	
			CHECKED BY:		DWG NUMBER: SPH1-F120A-PCB	
	MFG APPR:		ENGR APPR:		REV: C	
QA APPR:		SCALE: 5:1		SHEET 3 OF 4		

- PROPRIETARY INFORMATION -
NO USE OR REPRODUCTION MAY BE MADE OF
THIS DOCUMENT WITHOUT EXPRESS WRITTEN
PERMISSION OF NEOCONIX.

REVISIONS				
REV	ECN	DESCRIPTION	DATE	APPROVED
A	1249	PRODUCTION RELEASE	08-01-2019	WES TAO
B	1257	INTERPOSER WIDTH REDUCED 0.3	08-30-2019	WES TAO
C	1285	INCREASE MOUNTING HOLE	03-01-2021	WES TAO



NOTES:

- IT IS ACCEPTABLE TO ROTATE THE POSITION OF THE VIAS AS NEEDED.
- IF THE VIA NEEDS TO BE LOCATED WITHIN THE 0.76MM PAD DIAMETER, IT MUST BE FILLED, PLATED, AND PLANARIZED WITH 25UM MAX DIMPLE.
- SOLDERMASK APPLICATION IN THE ARRAY AREA IS OPTIONAL. IF APPLIED, IT SHALL NOT PROTRUDE MORE THAN 0.03MM ABOVE THE SURFACE OF THE MATING PADS.

<p>4020 MOORPARK AVENUE #108 SAN JOSE, CA 95117 USA TEL: 408-530-9393 FAX: 408-530-9383</p>	DIMENSIONS ARE IN MM .X ± 0.13 .XX ± 0.08 .XXX ± 0.025		MATERIAL: SEE NOTES FINISH:		TITLE: RECOMMENDED FPC LAYOUT SPH1-F120A	
	ANGLE: NO DEC ± 1 .X ± 0.5 .XX ± 0.25		DRAWN BY: W.B.LONG 08-08-2019	SIZE: B+		DWG NUMBER: SPH1-F120A-FPC
	THIRD ANGLE		CHECKED BY:	REV: C		SCALE: 4:1
			ENGR APPR:	SHEET 4 OF 4		