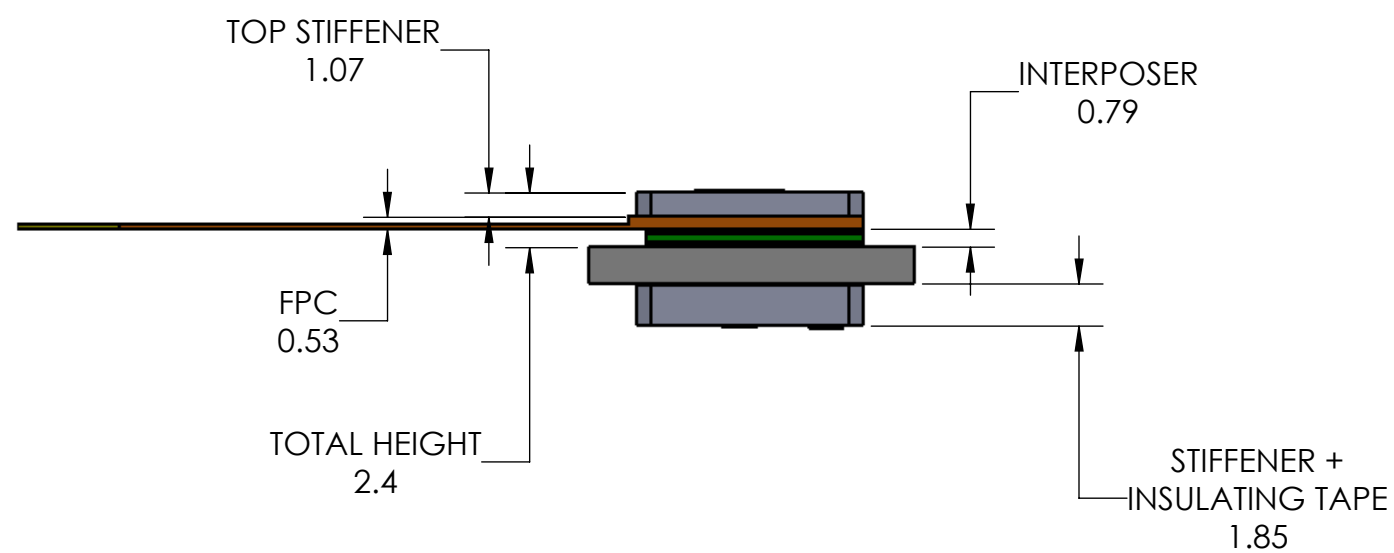
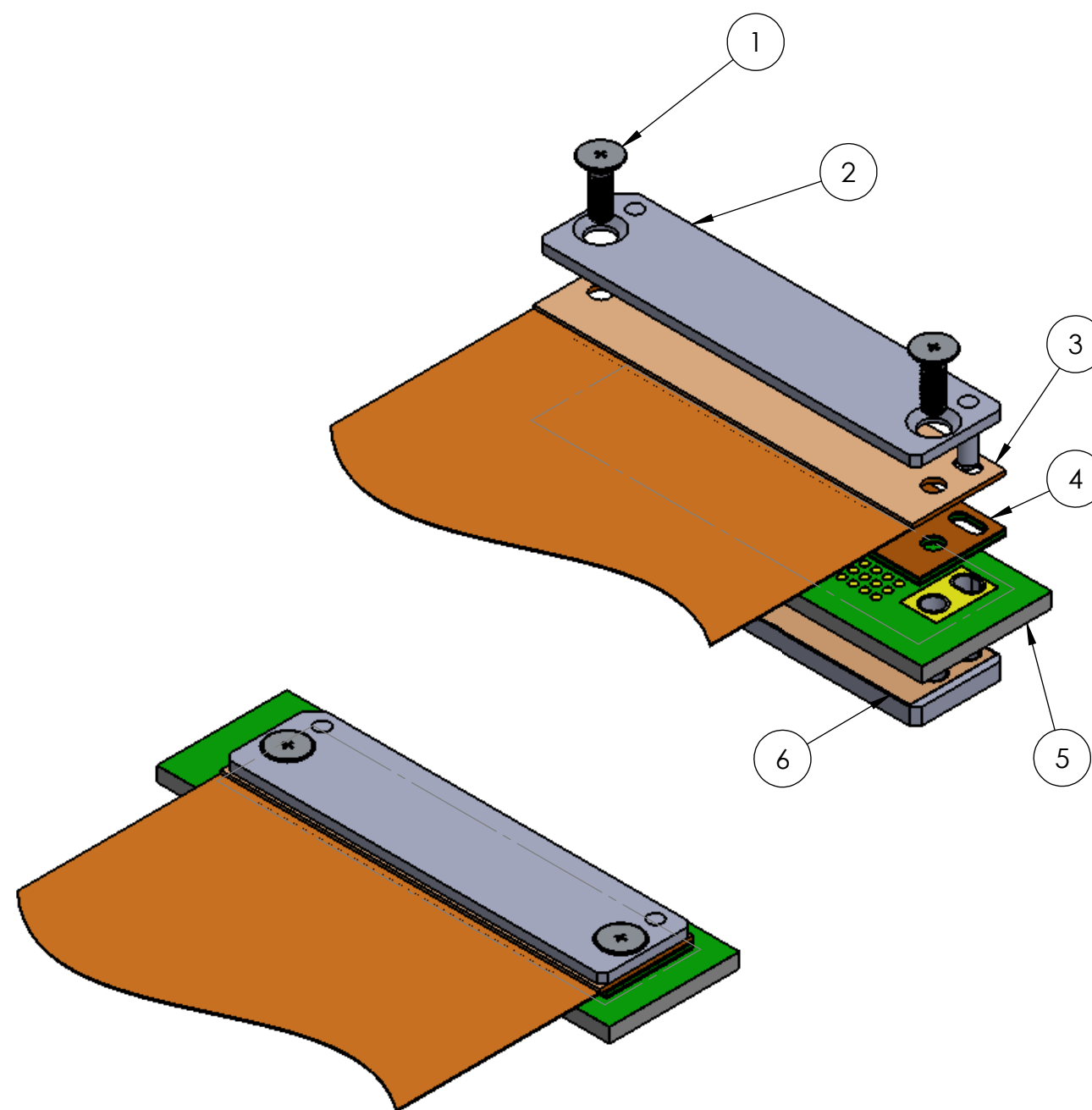
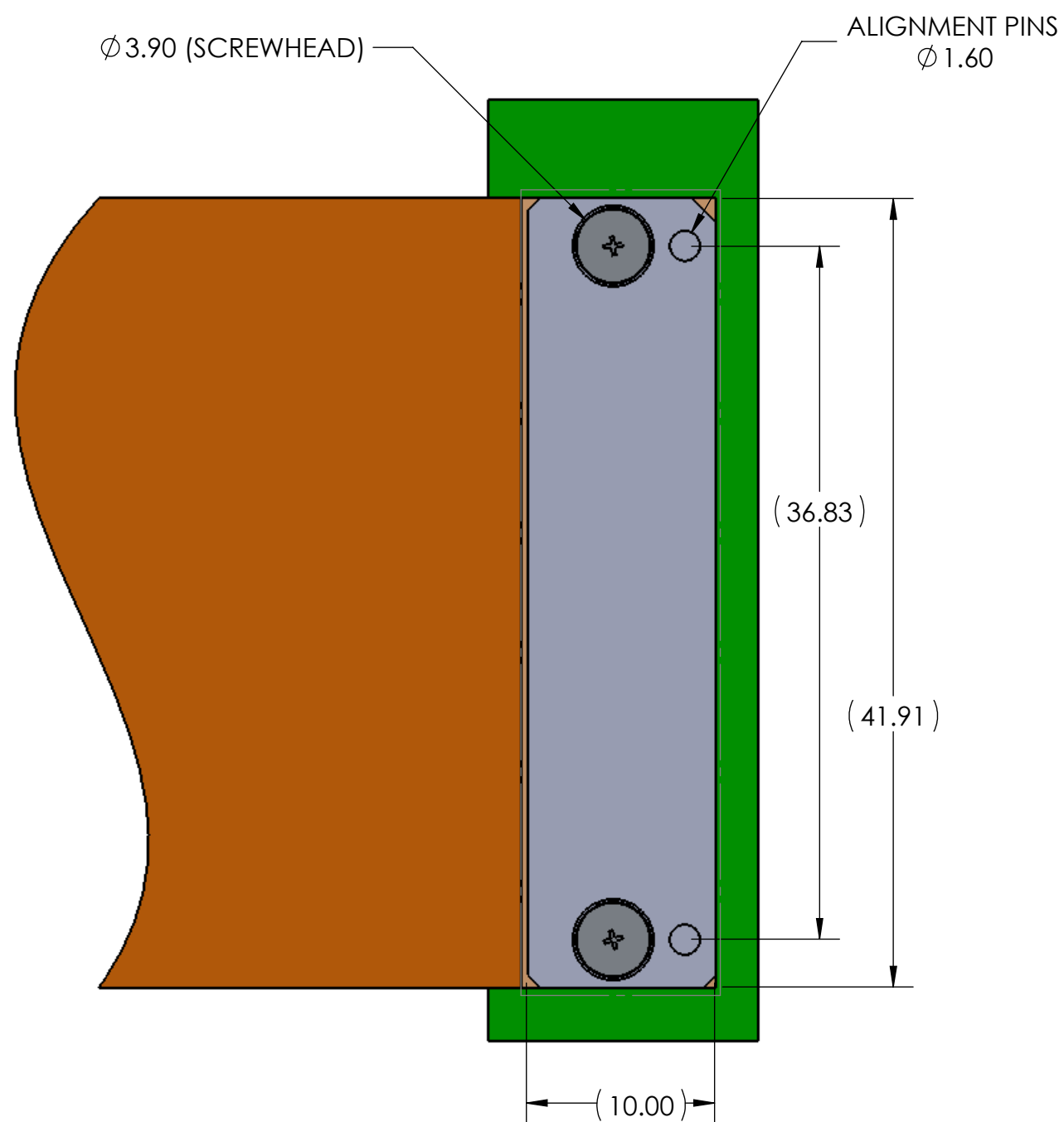


- PROPRIETARY INFORMATION -
NO USE OR REPRODUCTION MAY BE MADE OF
THIS DOCUMENT WITHOUT EXPRESS WRITTEN
PERMISSION OF NEOCONIX.

REVISIONS				
REV	ECN	DESCRIPTION	DATE	APPROVED
A	1249	PRODUCTION RELEASE	08-01-2019	WES TAO
B	1257	INTERPOSER WIDTH REDUCED 0.3	08-30-2019	WES TAO



ITEM	DESCRIPTION	NEOCONIX P/N	QTY PER ASSY
1	M2 FLATHEAD SCREW	VARIOUS *	2
2	TOP STIFFENER	B01-000623-Lxxx *	1
3	FPC	CUSTOM	1
4	INTERPOSER	SPH1-F120A	1
5	PCB	CUSTOM	1
6	BOTTOM STIFFENER	B01-000627	1

* SEE AS-000017 FOR VARIOUS PART NUMBER
OPTIONS BASED ON ASSEMBLY THICKNESS STACKUP.
ALL ITEMS ORDERED SEPARATELY.

neoconix
4020 MOORPARK AVENUE #108
SAN JOSE, CA 95117 USA
TEL: 408-530-9393 FAX: 408-530-9383

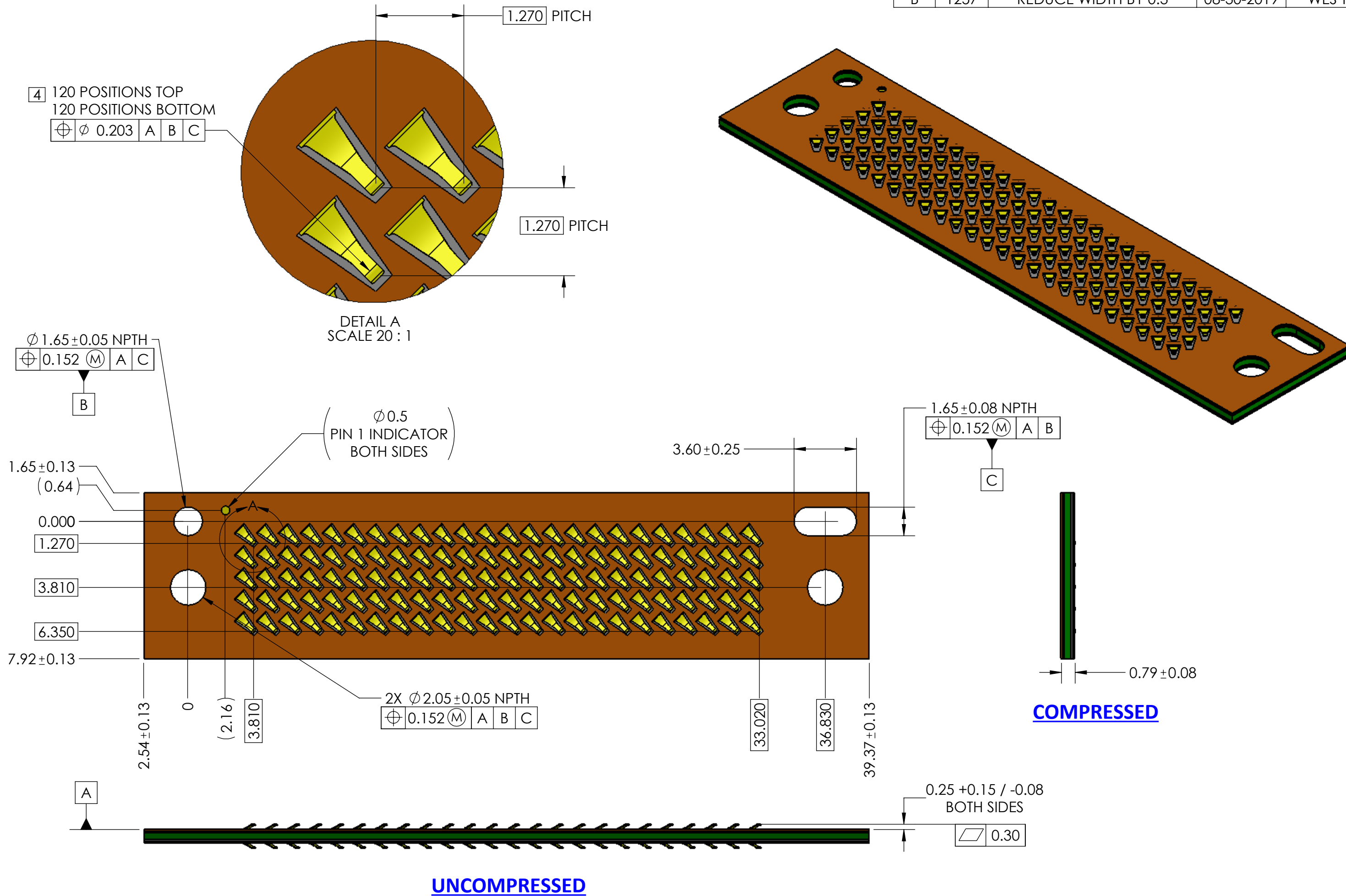
DIMENSIONS ARE IN
MM [INCH]
.X ±
.XX ±
.XXX ±
ANGLE: NO DEC ±
.X ±
.XX ±
THIRD ANGLE

MATERIAL: SEE NOTES
FINISH:
DRAWN BY: W.B.LONG 08-01-2019
CHECKED BY:
ENGR APPR:
MFG APPR:
QA APPR:

TITLE:
**SPH1 ASSEMBLY
120 POSITIONS LGA-LGA**
SIZE DWG NUMBER:
B+ **SPH1-F120A-ASY** REV
SCALE: 3:1 SHEET 1 OF 4

- PROPRIETARY INFORMATION -
NO USE OR REPRODUCTION MAY BE MADE OF
THIS DOCUMENT WITHOUT EXPRESS WRITTEN
PERMISSION OF NEOCONIX.

REVISIONS				
REV	ECN	DESCRIPTION	DATE	APPROVED
A	1249	PRODUCTION RELEASE	08-01-2019	WES TAO
B	1257	REDUCE WIDTH BY 0.3	08-30-2019	WES TAO



NOTES (UNLESS OTHERWISE SPECIFIED):

1. INTERPRET DRAWING PER ASME Y14.5M-1994.
2. HALOGEN-FREE PER IPC-4101B.
3. COMPLIANT WITH RoHS DIRECTIVE 2011/65/EU.

4 CENTER MARKS OF CONTACT POSITIONS ARE FOR COMPRESSED STATE

neoconix
4020 MOORPARK AVENUE #108
SAN JOSE, CA 95117 USA
TEL: 408-530-9393 FAX: 408-530-9383

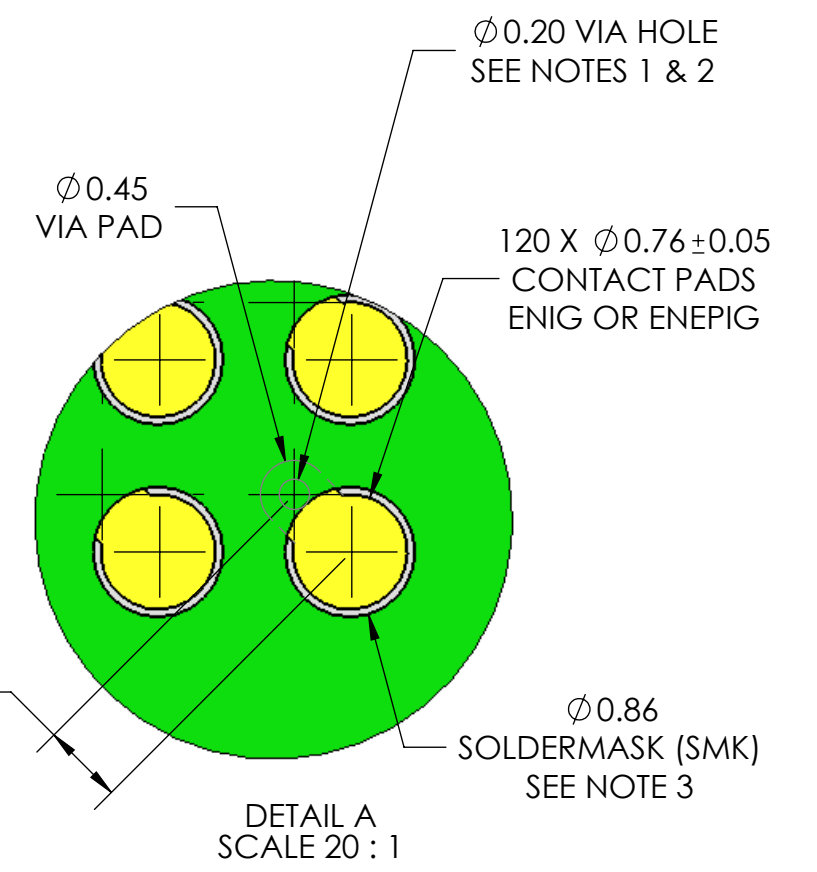
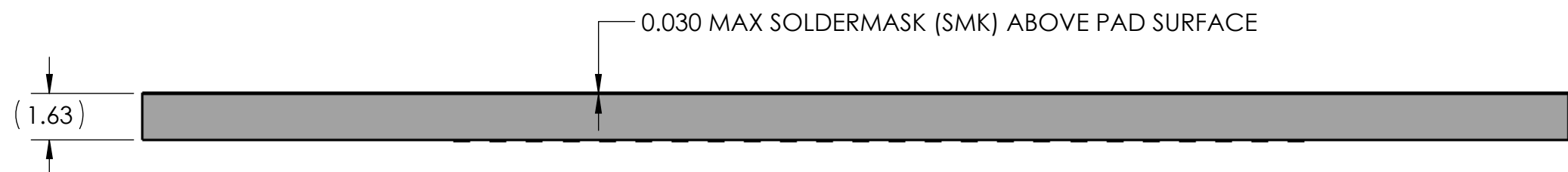
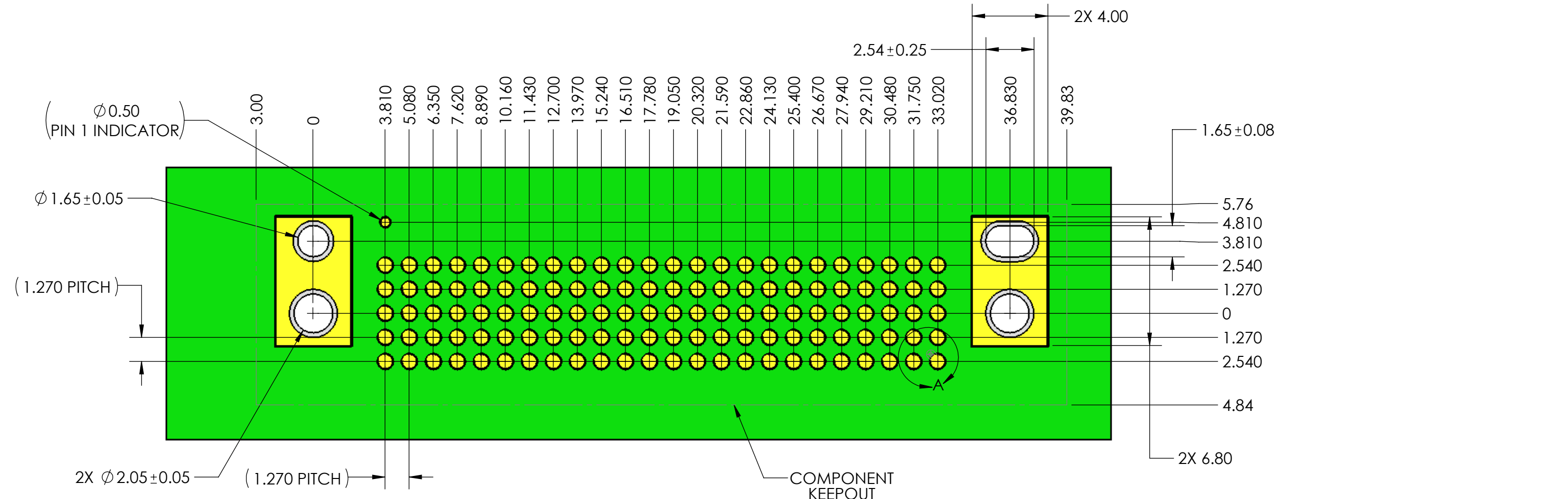
DIMENSIONS ARE IN MM
.X ± 0.13
.XX ± 0.08
.XXX ± 0.025
ANGLE: NO DEC ± 2 DEGREE
.X ±
.XX ±

MATERIAL: SEE NOTES
FINISH:
DRAWN BY: W.B.LONG 08-01-2019
CHECKED BY:
ENGR APPR:
MFG APPR:
QA APPR:

TITLE:
SPH1 INTERPOSER
120 POS LGA - LGA
SIZE: B+
DWG NUMBER:
SPH1-F120A
REV: B
SCALE: 5:1
SHEET 2 OF 4

- PROPRIETARY INFORMATION -
NO USE OR REPRODUCTION MAY BE MADE OF
THIS DOCUMENT WITHOUT EXPRESS WRITTEN
PERMISSION OF NEOCONIX.

REVISIONS				
REV	ECN	DESCRIPTION	DATE	APPROVED
A	1249	PRODUCTION RELEASE	08-01-2019	WES TAO
B	1257	INTERPOSER WIDTH REDUCED 0.3	08-30-2019	WES TAO

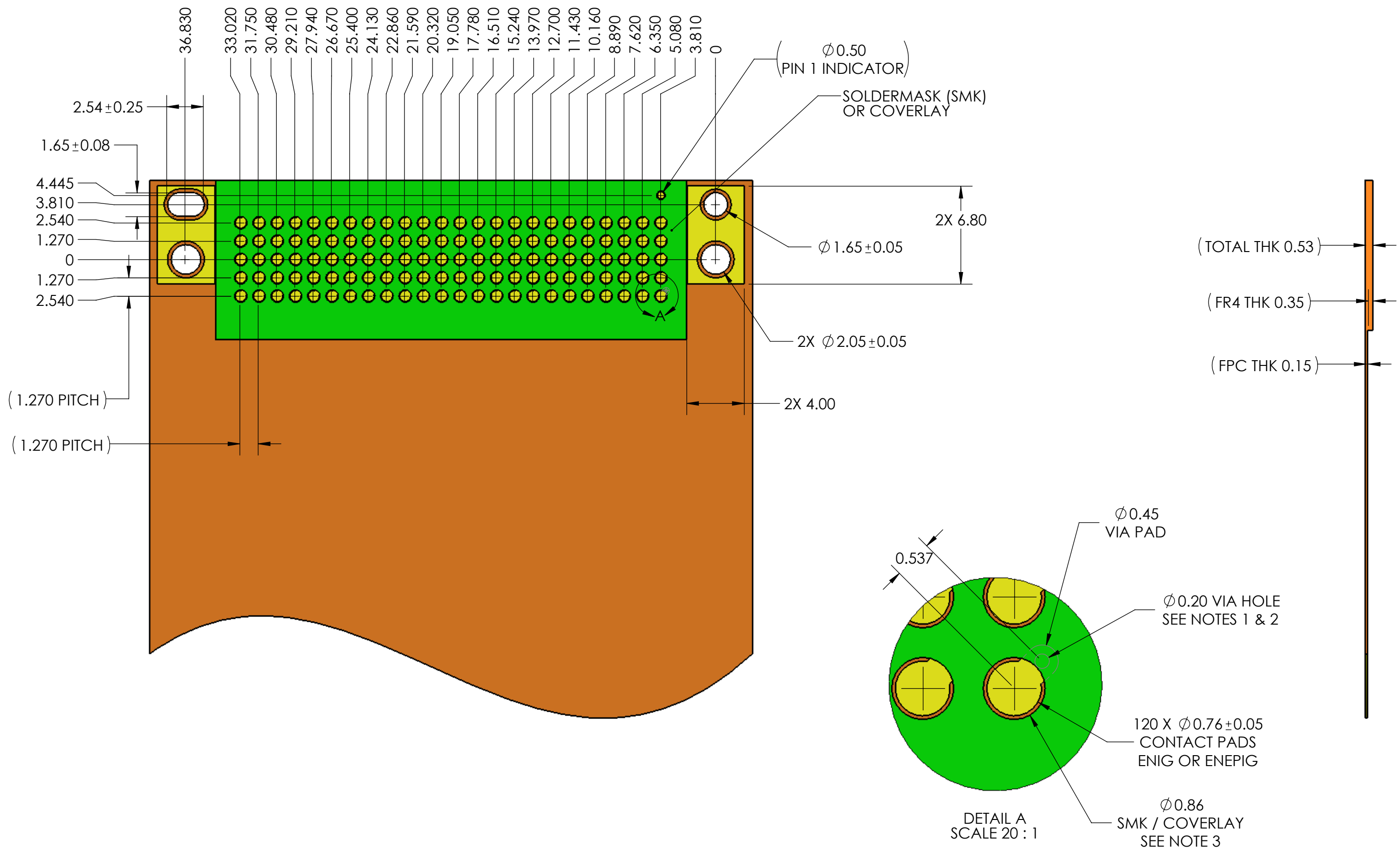


- NOTES:
- IT IS ACCEPTABLE TO ROTATE THE POSITION OF THE VIAS AS NEEDED.
 - IF THE VIA NEEDS TO BE LOCATED WITHIN THE 0.76MM PAD DIAMETER, IT MUST BE FILLED, PLATED, AND PLANARIZED WITH 25UM MAX DIMPLE.
 - SOLDERMASK APPLICATION IN THE ARRAY AREA IS OPTIONAL. IF APPLIED, IT SHALL NOT PROTRUDE MORE THAN 0.03MM ABOVE THE SURFACE OF THE MATING PADS.

<p>4020 MOORPARK AVENUE #108 SAN JOSE, CA 95117 USA TEL: 408-530-9393 FAX: 408-530-9383</p>	DIMENSIONS ARE IN MM [INCH] .X ± .XX ± .XXX ± ANGLE: NO DEC ± .X ± .XX ±	MATERIAL: SEE NOTES FINISH: <input checked="" type="checkbox"/> ENIG DRAWN BY: W.B.LONG 08-01-2019 CHECKED BY: ENGR APPR: MFG APPR: QA APPR:	TITLE: RECOMMENDED PCB LAYOUT SPH1-F120A DWG NUMBER: SPH1-F120A-PCB SCALE: 5:1
	THIRD ANGLE	SIZE: B+	REV: B
	SHEET 3 OF 4		

- PROPRIETARY INFORMATION -
NO USE OR REPRODUCTION MAY BE MADE OF
THIS DOCUMENT WITHOUT EXPRESS WRITTEN
PERMISSION OF NEOCONIX.

REVISIONS				
REV	ECN	DESCRIPTION	DATE	APPROVED
A	1249	PRODUCTION RELEASE	08-01-2019	WES TAO
B	1257	INTERPOSER WIDTH REDUCED 0.3	08-30-2019	WES TAO



NOTES:

- IT IS ACCEPTABLE TO ROTATE THE POSITION OF THE VIAS AS NEEDED.
- IF THE VIA NEEDS TO BE LOCATED WITHIN THE 0.76MM PAD DIAMETER, IT MUST BE FILLED, PLATED, AND PLANARIZED WITH 25UM MAX DIMPLE.
- SOLDERMASK APPLICATION IN THE ARRAY AREA IS OPTIONAL. IF APPLIED, IT SHALL NOT PROTRUDE MORE THAN 0.03MM ABOVE THE SURFACE OF THE MATING PADS.

<p>4020 MOORPARK AVENUE #108 SAN JOSE, CA 95117 USA TEL: 408-530-9393 FAX: 408-530-9383</p>	DIMENSIONS ARE IN MM [INCH]		MATERIAL: SEE NOTES		TITLE: RECOMMENDED FPC LAYOUT SPH1-F120A	
	FINISH:		DRAWN BY: W.B.LONG 08-08-2019		SIZE:	
	CHECKED BY:		ENGR APPR:		DWG NUMBER:	
	ANGLE: NO DEC ± .X ± .XX ± .XXX ±		MFG APPR:		REV:	
THIRD ANGLE		QA APPR:		SCALE: 4:1		
				SHEET 4 OF 4		