

PCBridge™ Co-Planar Board to Board Interposer

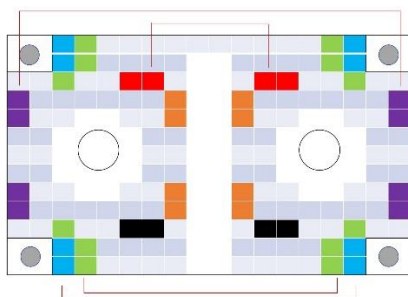
OVERVIEW

The Neoconix PCBridge™ products are rigid, separable, electro-mechanical, co-planar link between two adjacent printed circuit boards (PCBs). The product consists of an advanced high-speed rigid printed circuit (PCB) core with integrated PCBeam™ contact flanges and is secured to the mating PC Boards with a single simple, highly reliable screw-down fastening system. The PCBridge Interposer is a compressive interconnect, eliminating the need for any mating SMT connectors, and the “Bridge” thickness provides the required stiffness for uniform micro-spring contact compression on the intended mating coplanar PC Boards

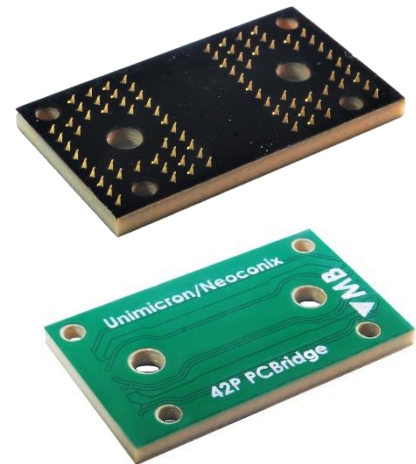
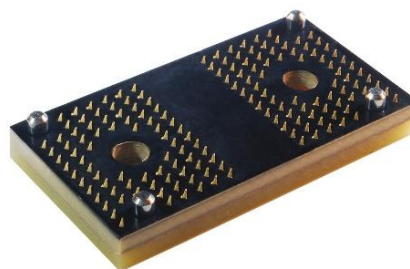
By combining the advanced PCB with an extremely short electrical termination path, along with innovative ground traces and shielding layers, these assemblies can uniquely combine high-speed signaling and significant power delivery while minimizing PCB real estate and enabling the highest density of differential pairs/mm² in the industry! The PCBridge Interposers are ideally suited when combining , power (3 – 10 Amps), and numerous high-speed differential pairs as used extensively in the mobile laptop industry.

FEATURES

- Integrates PCBeam Connector + High-Performance PCB into one solution
- High Density: as low as 0.65mm Pitch with additional customization possible
- Extensive customization in size, footprint, pitch, and pin count
- No SMT parts on top of Mainboard
- No additional metallic stiffeners on top of the PCBeam Bridge
- Extensive signal routing customization possible, e.g. point to point or translation
- Solderless Highly Reliable, Screw-down Connection to Mainboard
- High Current: >10A possible
- High Speed Assembly: >16Gbps, including PCIe Gen4
- Low Profile Mainboard Connection: as low as 1.5mm
- Compliant with RoHS 2011/65/EU and IPC-4101B (halogen-free)
- Flexibility in PCB Length (typically 20mm – 150mm)



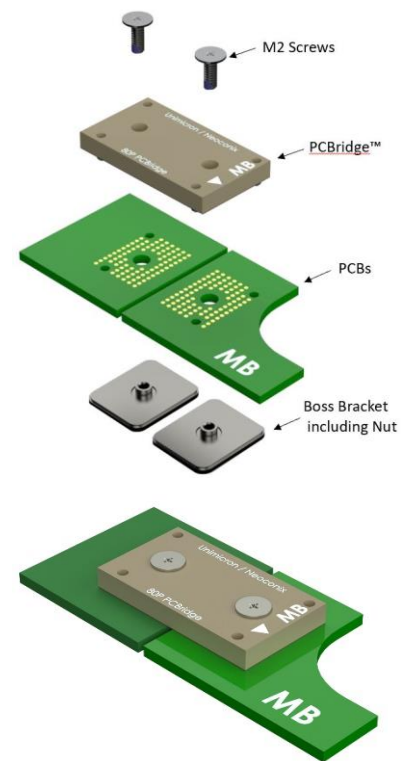
PCBridge™ Pin Routing Example



PCBridge™ Example



PCBeam™ Termination



PCBridge™ Assembly

FOR MORE INFORMATION

Neoconix, Inc., 4020 Moorpark Ave, #108, San Jose, CA 95117. Web: www.neoconix.com E: sales@neoconix.com P: 408.530.9393

August 2023