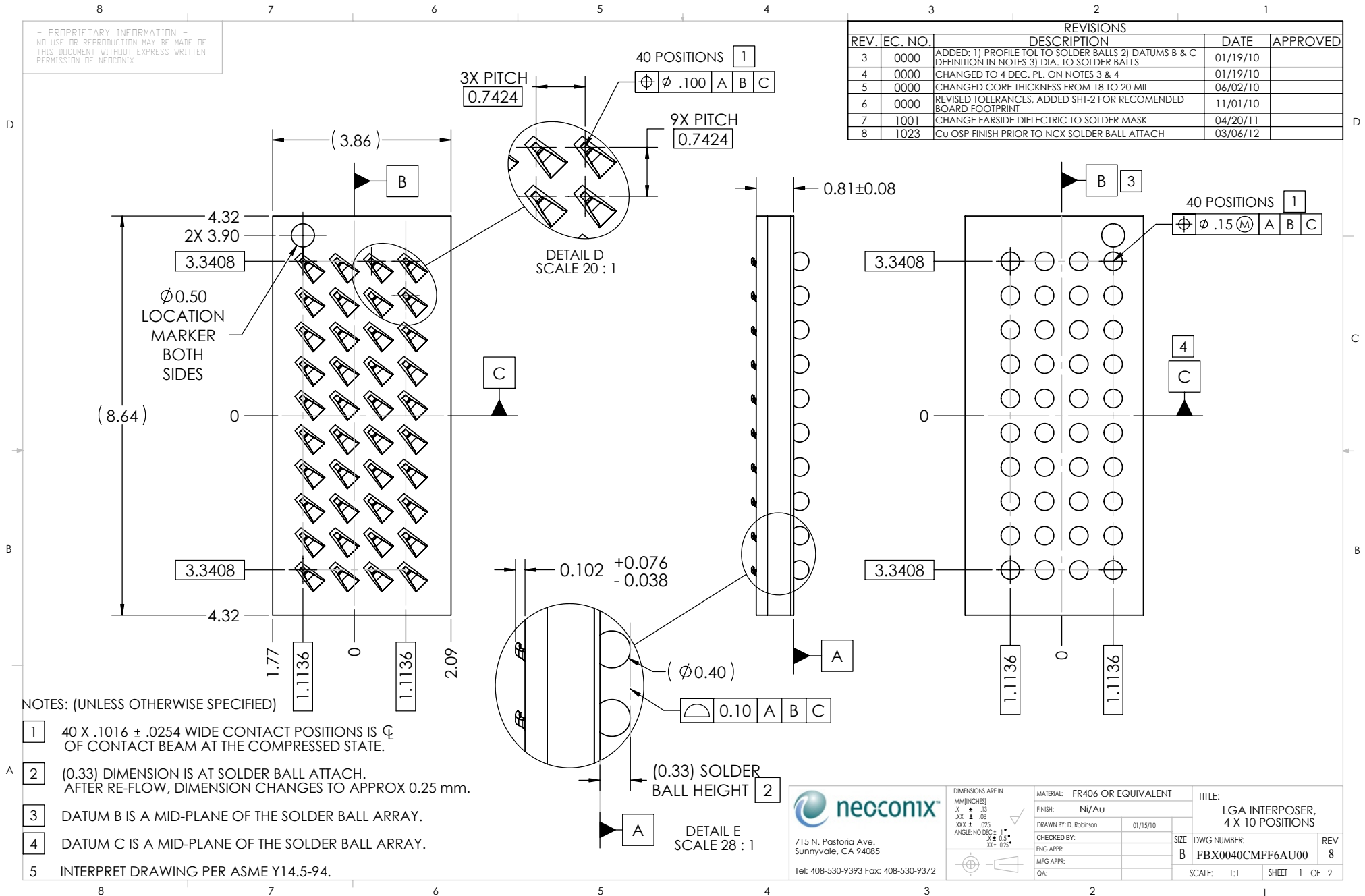


- PROPRIETARY INFORMATION -
NO USE OR REPRODUCTION MAY BE MADE OF
THIS DOCUMENT WITHOUT EXPRESS WRITTEN
PERMISSION OF NEOCONIX

REVISIONS				
REV.	EC. NO.	DESCRIPTION	DATE	APPROVED
3	0000	ADDED: 1) PROFILE TOL TO SOLDER BALLS 2) DATUMS B & C DEFINITION IN NOTES 3) DIA. TO SOLDER BALLS	01/19/10	
4	0000	CHANGED TO 4 DEC. PL. ON NOTES 3 & 4	01/19/10	
5	0000	CHANGED CORE THICKNESS FROM 18 TO 20 MIL	06/02/10	
6	0000	REVISED TOLERANCES, ADDED SHT-2 FOR RECOMMENDED BOARD FOOTPRINT	11/01/10	
7	1001	CHANGE FAR SIDE DIELECTRIC TO SOLDER MASK	04/20/11	
8	1023	CU OSP FINISH PRIOR TO NCX SOLDER BALL ATTACH	03/06/12	



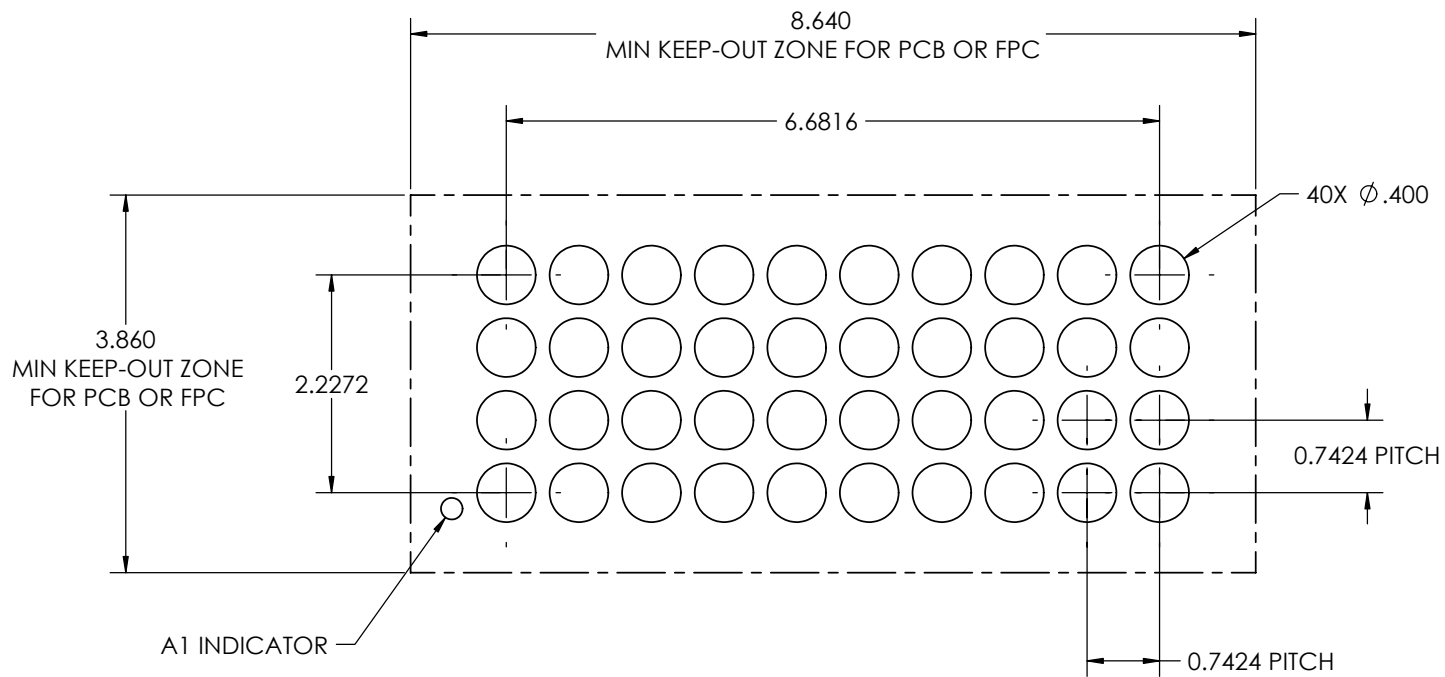
NOTES: (UNLESS OTHERWISE SPECIFIED)

- 1 40 X .1016 ± .0254 WIDE CONTACT POSITIONS IS ϕ OF CONTACT BEAM AT THE COMPRESSED STATE.
- 2 (0.33) DIMENSION IS AT SOLDER BALL ATTACH. AFTER RE-FLOW, DIMENSION CHANGES TO APPROX 0.25 mm.
- 3 DATUM B IS A MID-PLANE OF THE SOLDER BALL ARRAY.
- 4 DATUM C IS A MID-PLANE OF THE SOLDER BALL ARRAY.
- 5 INTERPRET DRAWING PER ASME Y14.5-94.

neconix
715 N. Pastoria Ave.
Sunnyvale, CA 94085
Tel: 408-530-9393 Fax: 408-530-9372

DIMENSIONS ARE IN MM(INCHES)		MATERIAL: FR406 OR EQUIVALENT	TITLE:
X ± .13	✓	FINISH: Ni/Au	LGA INTERPOSER, 4 X 10 POSITIONS
XXX ± .08		DRAWN BY: D. Robinson	01/15/10
XXXX ± .025		CHECKED BY:	
ANGLE: NO DEC ±		ENG APPR:	
XX ± 0.5*		MFG APPR:	
XX ± 0.25*		GA:	
SIZE		DWG NUMBER:	REV
B		FBX0040CMFF6AU00	8
SCALE: 1:1		SHEET 1 OF 2	

- PROPRIETARY INFORMATION -
NO USE OR REPRODUCTION MAY BE MADE OF
THIS DOCUMENT WITHOUT EXPRESS WRITTEN
PERMISSION OF NEOCONIX



	DIMENSIONS ARE IN MM (INCHES) ± 0.25 ± 0.13 ANGLE: NO DEC $\pm 1^\circ$ ± 0.13 ± 0.0254		MATERIAL: NA FINISH: NA DRAWN BY: TAN NGUYEN 10/29/2010		TITLE: RECOMMENDED BOARD FOOTPRINT	
	715 N. Pastoria Ave. Sunnyvale, CA 94085 Tel: 408-530-9393 Fax: 408-530-9372		CHECKED BY: ENG APPR: MFG APPR: QA:		SIZE B	DWG NUMBER: FBX0040CMFF6UA00 REV 8
					SCALE: 1:0.2 SHEET 2 OF 2	