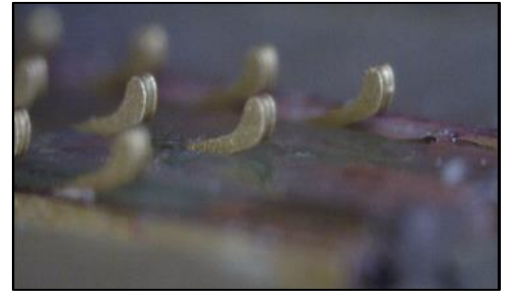


## CBM “mini” Product Family Overview High Density, High Performance Connectors

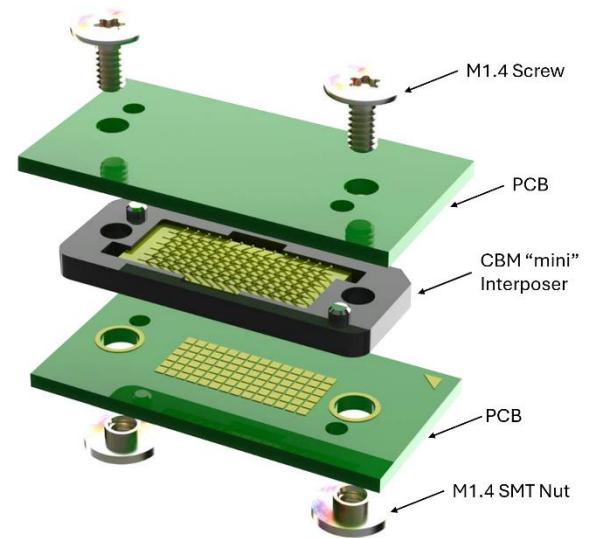
### OVERVIEW

Utilizing C-Beam™ technology, the CBM family of standard connectors are designed for high performance Board-to-Board (BtB) applications. The large pin counts enable combining numerous high speed differential pairs, high power, and signals in one connector. Compatible Screw & Nut hardware is available for simple assembly into the host system.



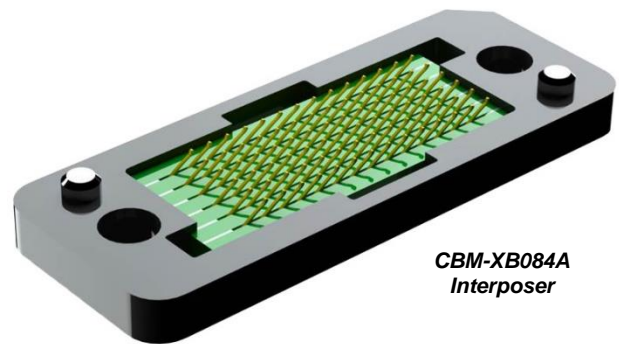
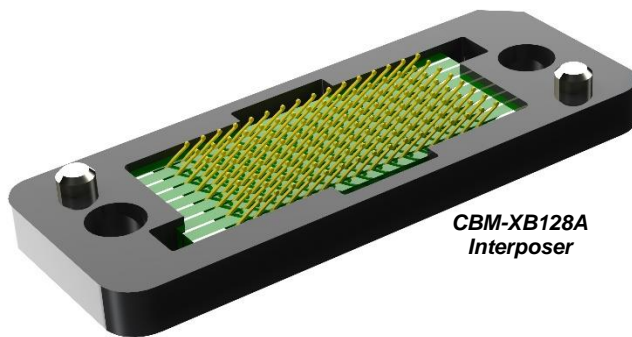
### FEATURES

- High Performance C-Beam™ Connector Technology
- High speed to 112 Gbps
- Product options at 0.50mm & 0.60mm pitch
- Low-profile 1.3mm interposer thickness
- Standardized 16.6mm L x 6.4mm W form factor
- Maximized pin count per form factor
- High-temperature thermoplastic housing
- Integrated Alignment Posts
- Current capacity up to 0.75 per position
- Standard assembly hardware
- Compliant with ROHS 2011/65/EU and IPC-4101B (halogen-free)



### STANDARD PRODUCT FAMILY

Interposer Part Number	Pitch (mm)	Pin Count	Rows	Cols	Length (mm)	Width (mm)	Height (mm)	Min PCB Thickness (mm)
CBM-XB128A	0.5	128	8	16	16.60	6.4	1.3	0.80
CBM-XB084A	0.6	84		14				



### FOR MORE INFORMATION

Neoconix, Inc., 4020 Moorpark Ave, #108., San Jose, CA 95117. Web: [www.neoconix.com](http://www.neoconix.com) E: [sales@neoconix.com](mailto:sales@neoconix.com) P: 408.530.9393