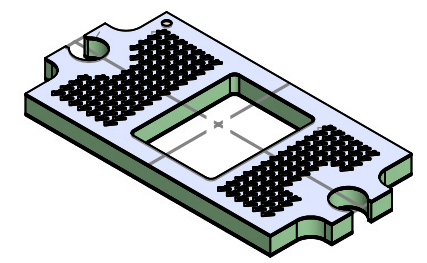
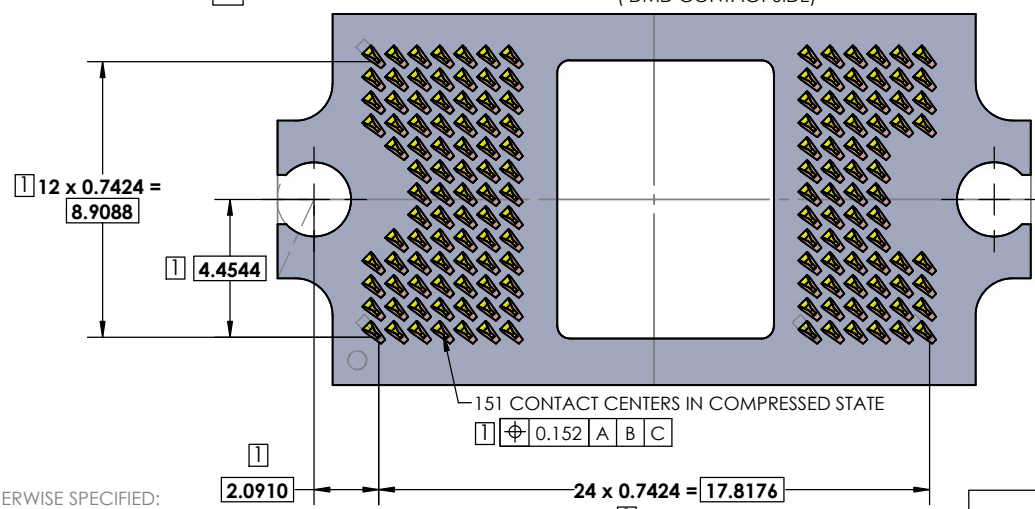
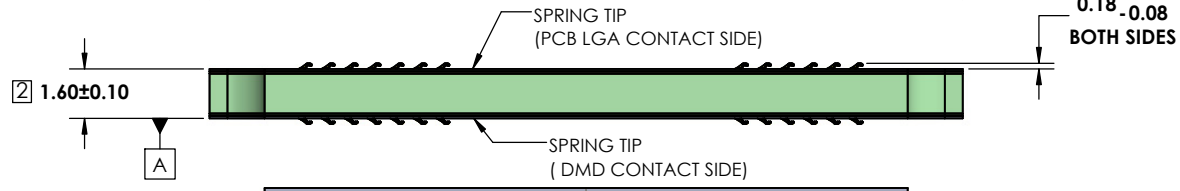
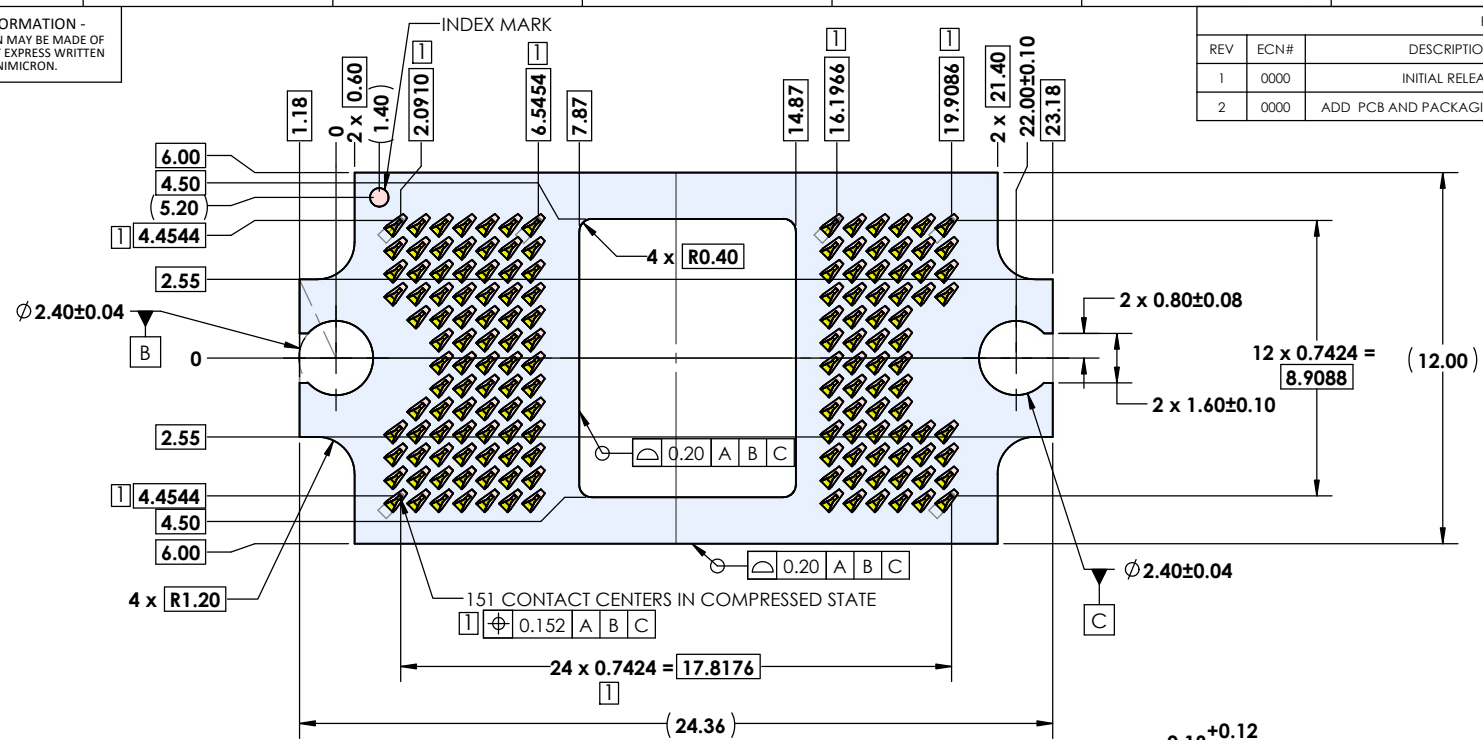


- PROPRIETARY INFORMATION -
NO USE OR REPRODUCTION MAY BE MADE OF
THIS DOCUMENT WITHOUT EXPRESS WRITTEN
PERMISSION OF UNIMICRON.

REVISIONS				
REV	ECN#	DESCRIPTION	DATE	DRAWN
1	0000	INITIAL RELEASE	2023/06/30	WINNI C.
2	0000	ADD PCB AND PACKAGING DRAWINGS	04/17/2024	TAN



NOTES: UNLESS OTHERWISE SPECIFIED:

- Center Position of The Contact Area In The Compressed State.
- Height When Contacts Are Fully Compressed Between DMD And PCB.
- Interpret Drawing Per ASME Y14.5-2018.
- Compliant With RoHS Directive 2011/65/EU.

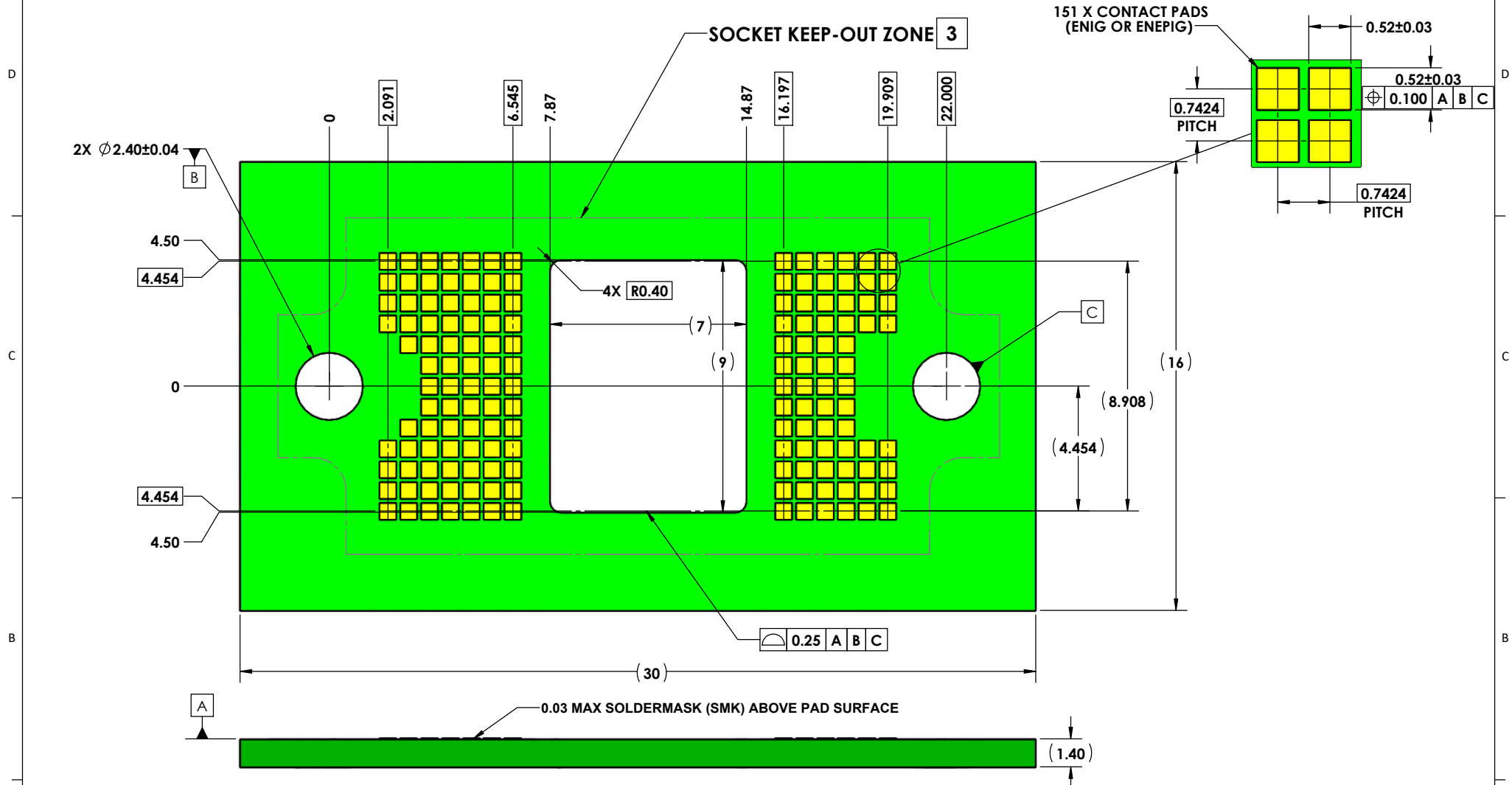


DIMENSIONS ARE IN
MM
.X ± 0.15
.XX ± 0.10
.XXX ± 0.05
ANGLE: NO DEC ± 1°
.X ± 0.5°
.XX ± 0.25°
THIRD ANGLE

MATERIAL:
FINISH: --
DRAWN BY: Winni Cheng 2023/06/30
CHECKED BY: Jason Wu 2023/06/30
ENGR APPR: Gary Hsieh 2023/06/30
MFG APPR:
QA APPR:

TITLE: 151 POSITIONS LGA-LGA PCBEAM INTERPOSER (0.7424 mm PITCH)
SIZE: 1.60 mm THK
DWG NUMBER: BDX0151CMMSXAU00
REV: 2
SCALE: 6.5:1 SHEET 1 OF 3

- PROPRIETARY INFORMATION -
NO USE OR REPRODUCTION MAY BE MADE OF
THIS DOCUMENT WITHOUT EXPRESS WRITTEN
PERMISSION OF UNIMICRON.



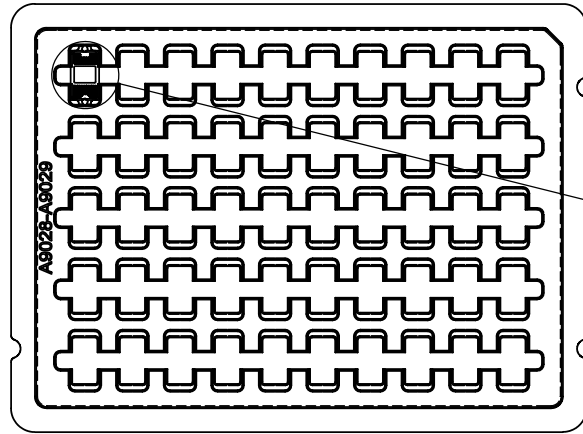
RECOMMENDED PCB PAD LAYOUT

NOTES (UNLESS OTHERWISE SPECIFIED):

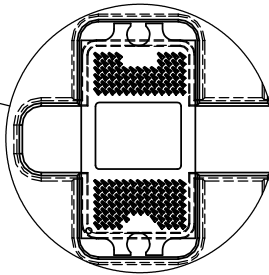
- IF THE VIA NEEDS TO BE LOCATED WITHIN THE 0.52 X 0.52 PAD, IT MUST BE FILLED, PLATED, AND PLANARIZED WITH 25um MAX DIMPLE.
- SOLDERMASK APPLICATION IN THE ARRAY AREA IS OPTIONAL. IF APPLIED, IT SHALL NOT PROTRUDE MORE THAN 0.03mm ABOVE THE SURFACE OF THE MATING PADS.
- INTERPOSER OUTLINE; NO COMPONENTS ALLOWED WITHIN THIS AREA.
- ALLOWED COMPONENT AREA; MAXIMUM COMPONENT HEIGHT 1.3 mm.

	DIMENSIONS ARE IN MM		MATERIAL:		TITLE: RECOMMEND PCB FOOTPRINT	
	.X ± 0.15		FINISH: --		DRAWN BY: TAN NGUYEN 04-17-2024	
	.XX ± 0.10		CHECKED BY:		SIZE: B+	
	.XXX ± 0.05		ENGR APPR:		DWG NUMBER: BDX0151CMMSXAU00	
ANGLE: NO DEC ± 1°		MFG APPR:		REV: 2		
.X ± 0.5°		QA APPR:		SCALE: 5:1		
.XX ± 0.25°		THIRD ANGLE		SHEET 2 OF 3		

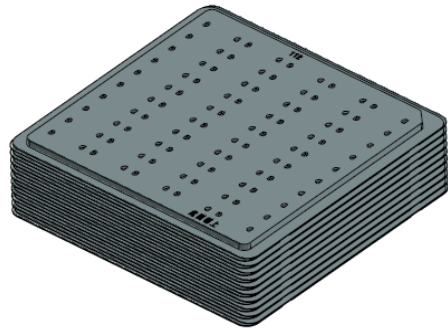
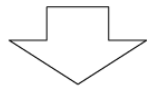
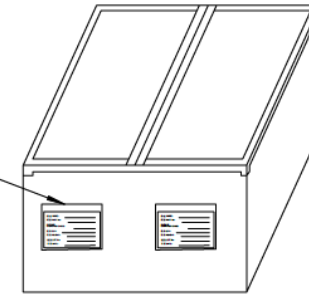
- PROPRIETARY INFORMATION -
NO USE OR REPRODUCTION MAY BE MADE OF
THIS DOCUMENT WITHOUT EXPRESS WRITTEN
PERMISSION OF UNIMICRON.



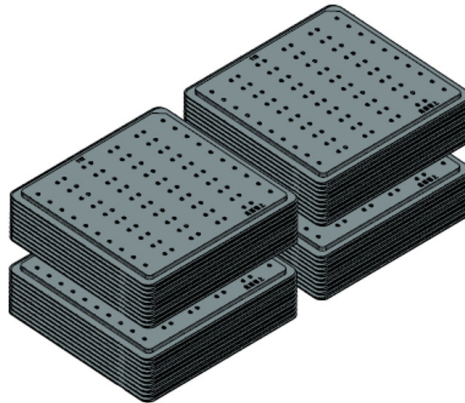
50 PCS/TRAY



CARTON LABELS

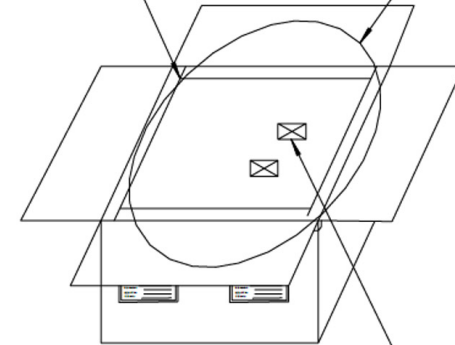


10 TRAY/PACKAGE



6 PACKAGE/CARTON

PE BAG



DRIER

NOTE (UNLESS OTHERWISE SPECIFIED):

- 1. COMPONENT LOAD PER TRAY: 50PCS.**
10 TRAY/PACKAGE: 500PCS.
6 PACKAGE/CARTON: 420mm X 260mm X 260mm.
TOTAL: 3000PCS/CARTON.

2. MATERIAL : TRANSPARENT POLYSTYRENE(PS).

PACKAGING

	DIMENSIONS ARE IN MM		MATERIAL:		TITLE:	
	.X ± 0.15	✓	FINISH: --		151 POS PACKAGING	
	.XX ± 0.10		DRAWN BY: TAN NGUYEN		04-17-2024	
	.XXX ± 0.05		CHECKED BY:		SIZE	
ANGLE: NO DEC ± 1°		ENGR APPR:		B+		
.X ± 0.5°		MFG APPR:		DWG NUMBER:		
.XX ± 0.25°		QA APPR:		BDX0151CMMSXAU00		
THIRD ANGLE				REV		
				2		
				SCALE: 1:2		
				SHEET 3 OF 3		