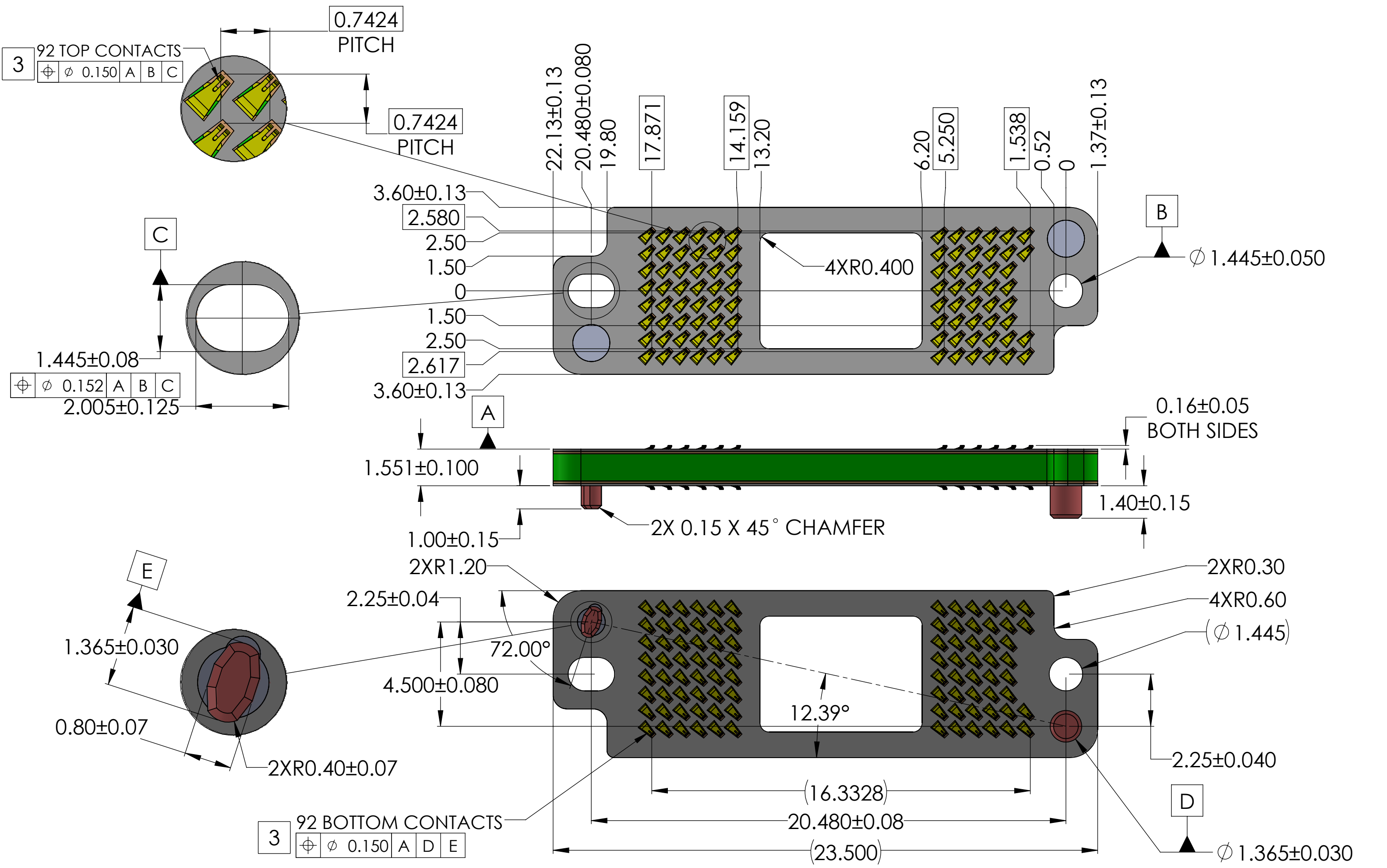


- PROPRIETARY INFORMATION -
NO USE OR REPRODUCTION MAY BE MADE OF
THIS DOCUMENT WITHOUT EXPRESS WRITTEN
PERMISSION OF NEOCONIX.

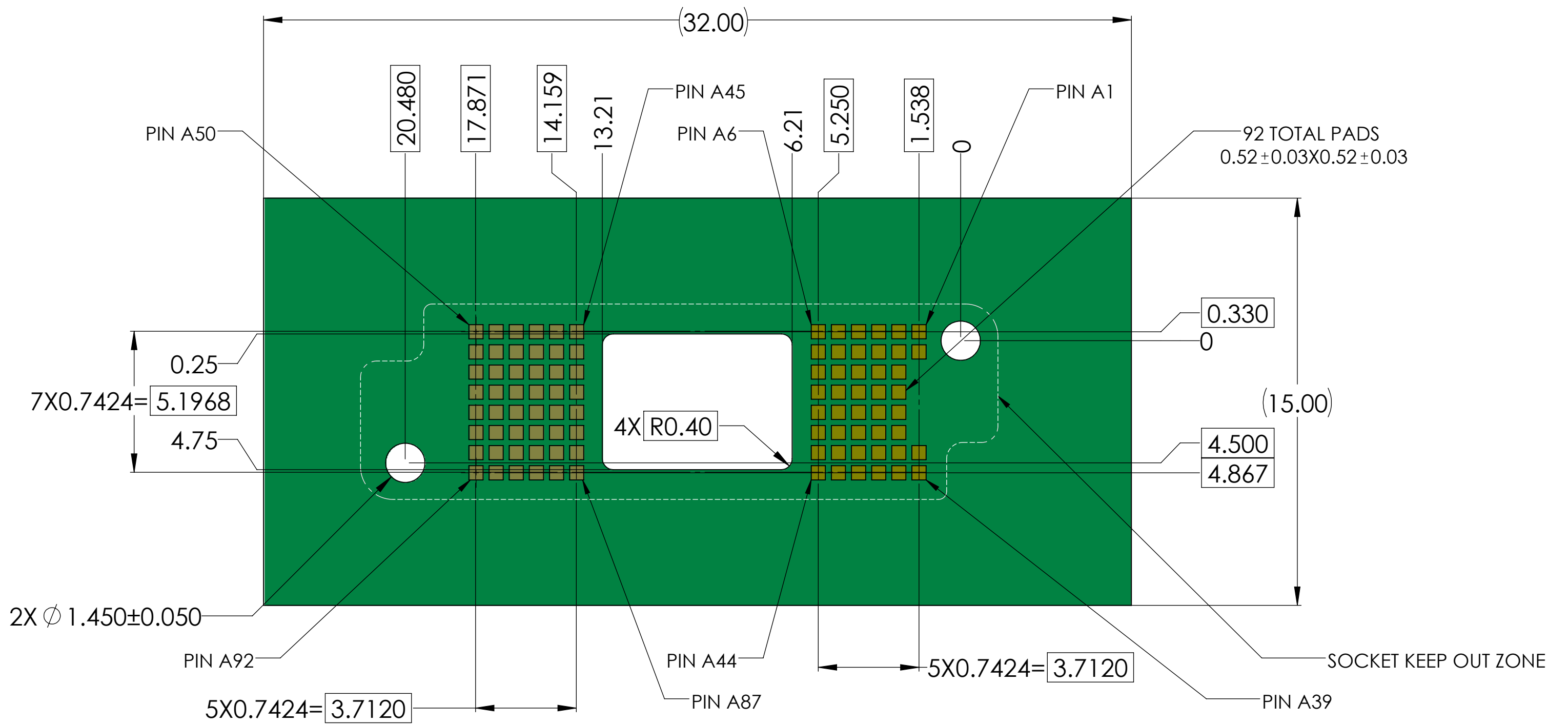
Reversions			
REV	ECN #	Description	Date
A		Preliminary	08/30/17



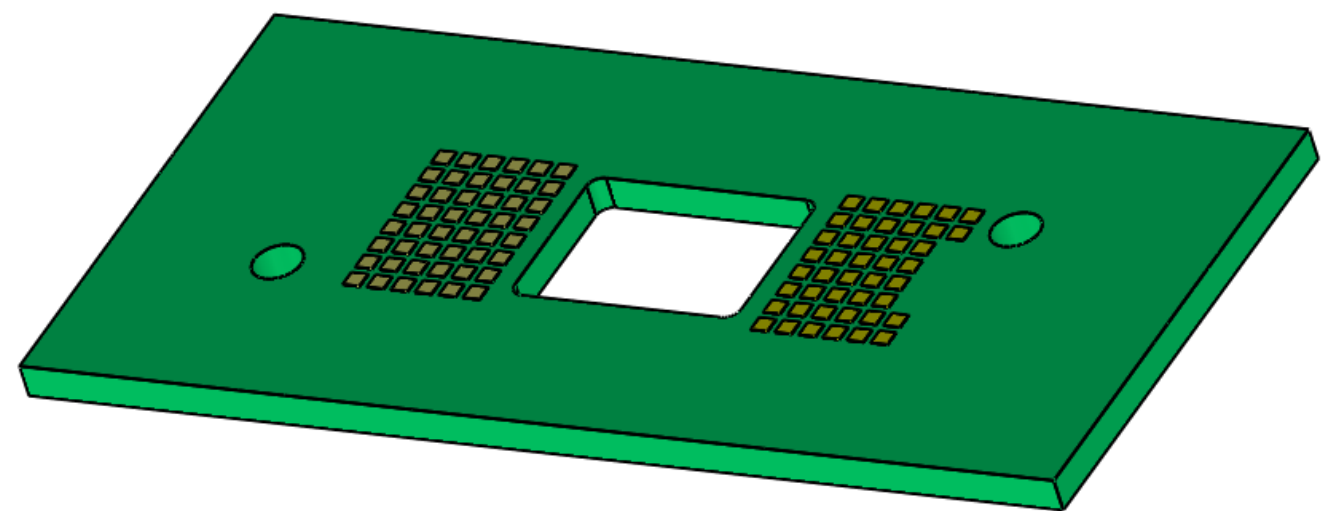
NOTES:(UNLESS OTHERWISE SPECIFIED)

1. INTERPRET DRAWING PER ASME Y14.5-94.
2. COMPLIANT WITH RoHS DIRECTIVE 2011/65/EU
3. CENTER MARKS OF CONTACT POSITIONS ARE FOR COMPRESSED

<p>715 N. PASTORIA AVE. SUNNYVALE, CA 94085 TEL: 408-530-9393 FAX: 408-530-9372</p>	DIMENSIONS ARE IN MM [INCH] .X ± 0.13 [.005] .XX ± 0.08 [.003] .XXX ± 0.025 [.001] ANGLE: NO DEC ± 1° .X ± 0.5° .XX ± 0.25°	MATERIAL: Gold FINISH: -- DRAWN BY: Yuanzheng Li 08/30/17 CHECKED BY: Gary Hsieh 08/30/17 ENGR APPR: Gary Hsieh 08/30/17 MFG APPR: QA APPR:	TITLE: 92POS PCBeam Interposer LGA-LGA,0.7424 Pitch DWG NUMBER: BBX0092CMMHFAU00 SCALE: 5:1	REV A
		SIZE B+	SHEET 1 OF 3	



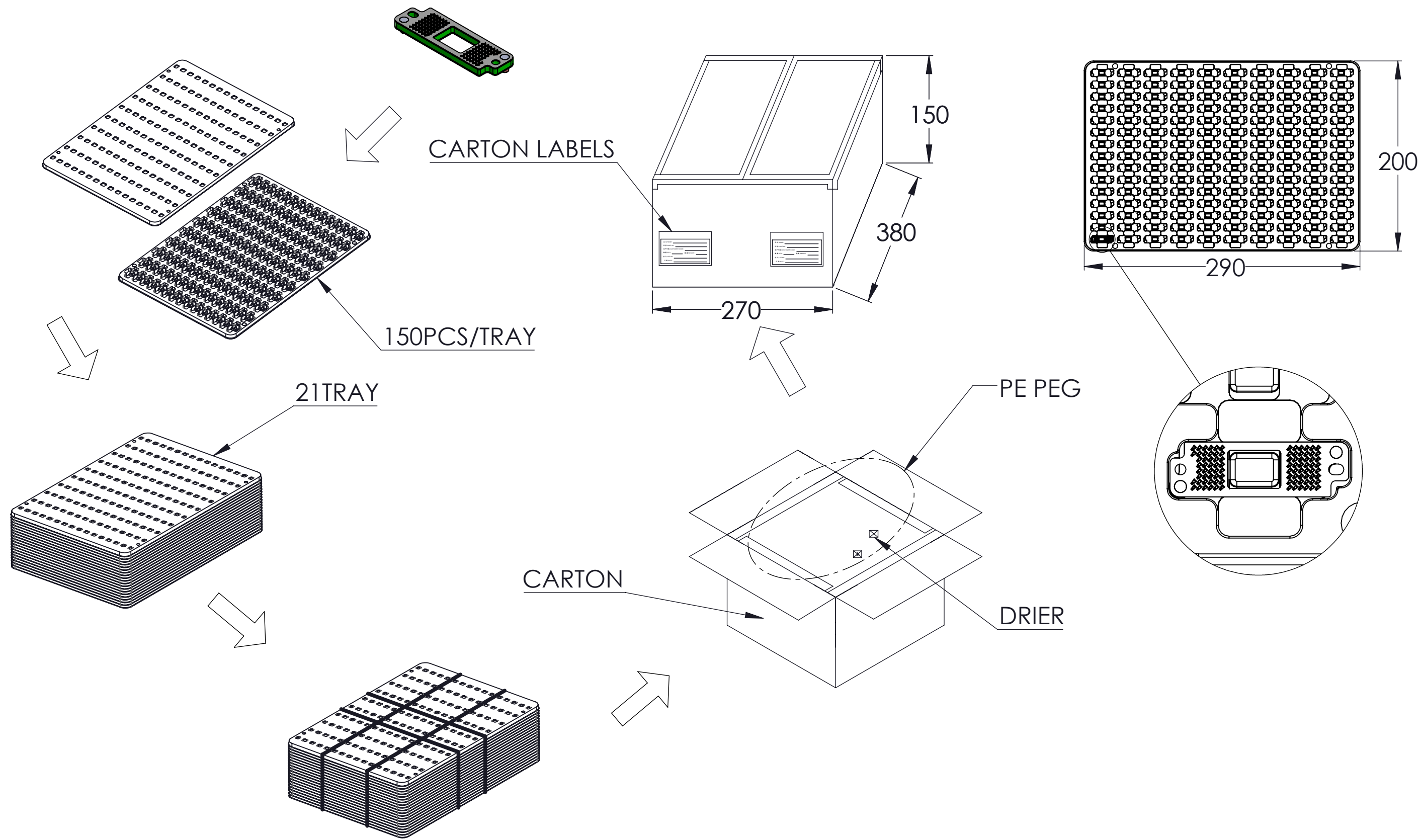
Recommend PCB Footprint



- NOTE(UNLESS OTHERWISH SPECIFIED):
- 1.PADS TO BE ELECTROLESS NICKEL/IMMERSION GOLD (ENIG) PLATED
 - 2.VIAS IN PAD AREAS MUST BE FILLED
 - 3.INTERPOSER OUTLINE;NO COMPONENTS ALLOWED WITHIN THIS AREA
 - 4.ALLOWED COMPONENT AREA; MAXIMUM COMPONENT HEIGHT 1.3 mm
 - 5.IF SOLDERMASK IS APPLIED IN THE ARRAY AREA.IT SHALL NOT PROTRUDE ABOVE THE PLANE OF THE CONTACT PAD SURFACE

<p>715 N. PASTORIA AVE. SUNNYVALE, CA 94085 TEL: 408-530-9393 FAX: 408-530-9372</p>	<p>DIMENSIONS ARE IN MM [INCH]</p> <p>.X ± 0.13 [.005] .XX ± 0.08 [.003] .XXX ± 0.025 [.001]</p> <p>ANGLE: NO DEC ± 1° .X ± 0.5° .XX ± 0.25°</p> <p>THIRD ANGLE</p>	<p>MATERIAL: Gold</p> <p>FINISH: --</p> <p>DRAWN BY: Yuanzheng Li 08/30/17</p> <p>CHECKED BY: Gary Hsieh 08/30/17</p> <p>ENGR APPR: Gary Hsieh 08/30/17</p> <p>MFG APPR:</p> <p>QA APPR:</p>	<p>TITLE: Recommend PCB Footprint</p> <p>SIZE: B+</p> <p>DWG NUMBER: BBX0092CMMHFAU00</p> <p>SCALE: 2.5:1</p>	
	<p>REV: A</p>	<p>SHEET 2 OF 3</p>	<p>REV: A</p>	<p>REV: A</p>
	<p>REV: A</p>	<p>REV: A</p>	<p>REV: A</p>	<p>REV: A</p>
	<p>REV: A</p>	<p>REV: A</p>	<p>REV: A</p>	<p>REV: A</p>

- PROPRIETARY INFORMATION -
NO USE OR REPRODUCTION MAY BE MADE OF
THIS DOCUMENT WITHOUT EXPRESS WRITTEN
PERMISSION OF NEOCONIX.



NOTE(UNLESS OTHERWISH SPECIFIED):
1.COMPONENT LOAD PER TRAY : 150PCS
21 TRAY/CARTON: 270mm X 380mm X 150mm.
TOTAL: 3150PCS/CARTON
2.MATERIAL:TRANSPARENT POLYSTYRENE(PS).

<p>715 N. PASTORIA AVE. SUNNYVALE, CA 94085 TEL: 408-530-9393 FAX: 408-530-9372</p>	DIMENSIONS ARE IN MM [INCH] .X ± 0.13 [.005] .XX ± 0.08 [.003] .XXX ± 0.025 [.001] ANGLE: NO DEC ± 1° .X ± 0.5° .XX ± 0.25°		MATERIAL: Gold FINISH: --		TITLE: Package SPEC	
	DRAWN BY: Yuanzheng Li 08/30/17		CHECKED BY: Gary Hsieh 08/30/17		SIZE B+	DWG NUMBER: BBX0092CMMHFAU00
	ENGR APPR: Gary Hsieh 08/30/17		MFG APPR:			
	QA APPR:		THIRD ANGLE		SCALE: 2.5:1 SHEET 3 OF 3	