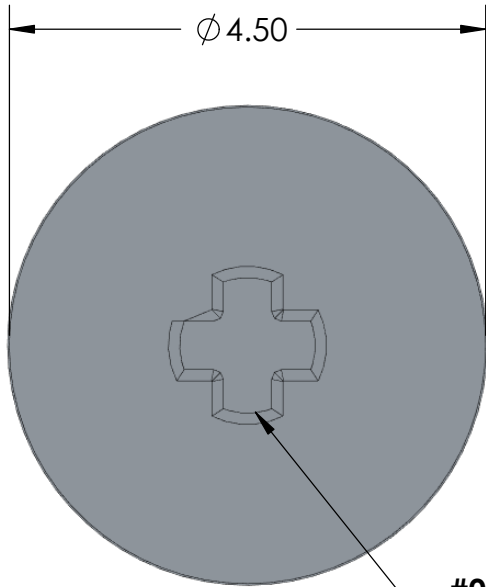
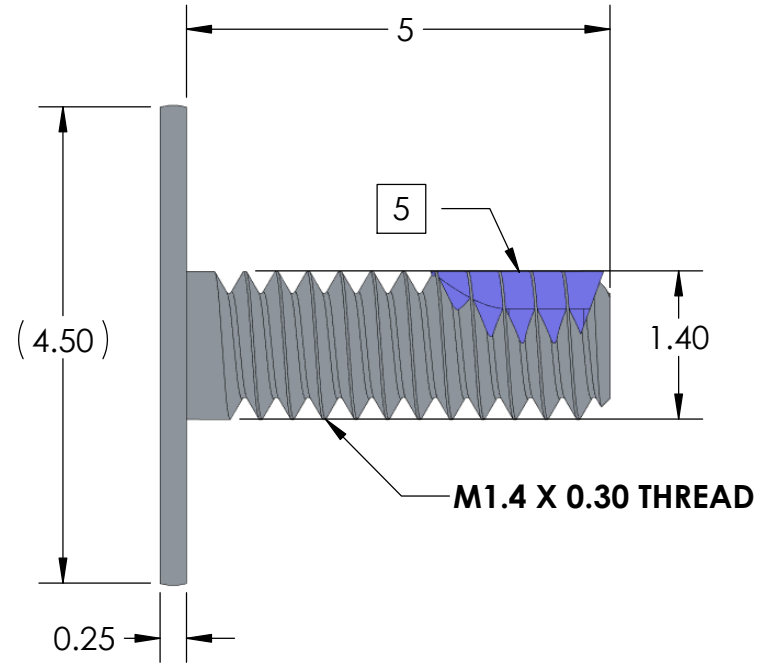


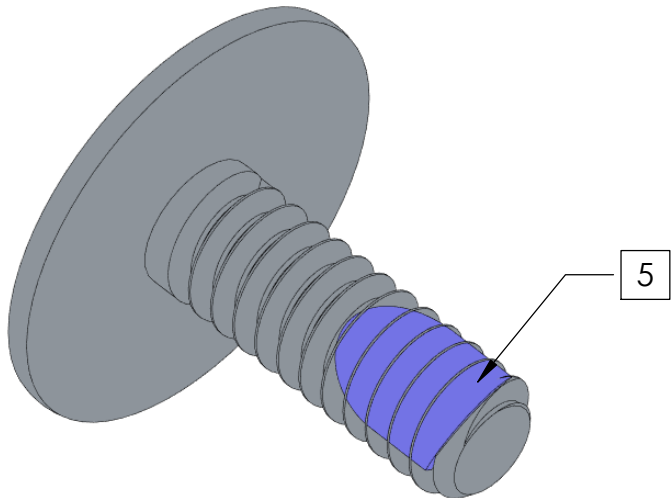
REVISIONS				
REV	ECN #	DESCRIPTION	DATE	DRAWN BY:
1	0000	PRODUCT RELEASED	10/29/2015	TAN
2	1277	CHANGE SCREW HEAD TO #0-PHILLIPS DRIVE	11/12/2020	TAN



#0-PHILLIPS DRIVE



M1.4 X 0.30 THREAD



NOTES (UNLESS OTHERWISE SPECIFIED):

1. INTERPRET DRAWING PER ASME Y14.5-94.
2. COMPLIANT WITH RoHS DIRECTIVE 2011/65/EU.
3. **MATERIAL:** AISI 1018.
4. **FINISH:** BRIGHT NICKEL PER ASTM B689-97, TYPE 2, CLASS S.
5. **THREADLOCK:** NYLOK-BLUE, FIRST 2-3 WHOLE THREADS, 75°-150° COVERAGE.
6. SCREW FIT TOLERANCE DOES NOT INCLUDE THREADLOCK.
7. PART TO BE FREE OF BURRS AND SHARP EDGES.

DIMENSIONS ARE IN mm TOLERANCES (unless otherwise specified):		NAME	DATE	4020 MOORPARK AVE., SUITE 108. SAN JOSE, CA 95117 TEL: 408-530-9393 FAX: 408-530-9383	
ANGULAR: ± 2 degree		DRAWN	Tan Nguyen	08/12/2014	Title: SCREW, M1.4 X .30PITCH x 5mm-LG
LINEAR: .X ±0.13		CHECKED			
.XX ±0.08		Appr			
.XXX ±0.025		Release level	RELEASED		
MATERIAL	AISI1018	COMMENTS:	Projection	SIZE	DWG. NO.
FINISH		DO NOT SCALE DRAWING		A	B01-000658
			SCALE:5:1	WEIGHT:	REV 2
					SHEET 1 OF 1