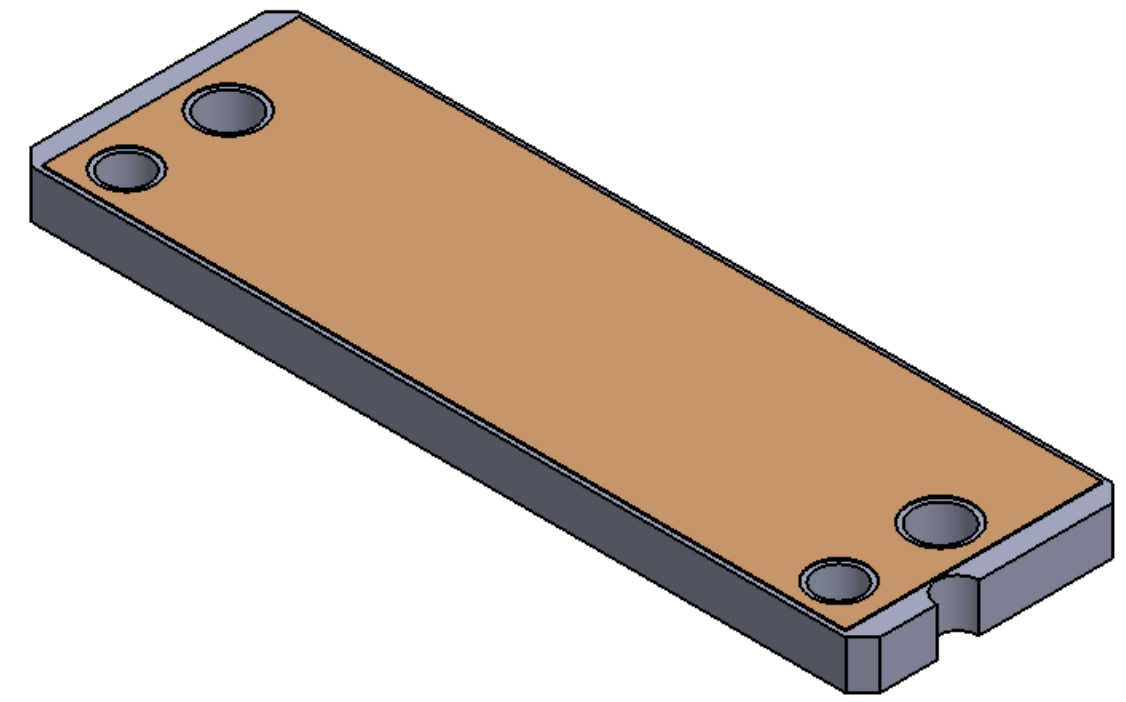
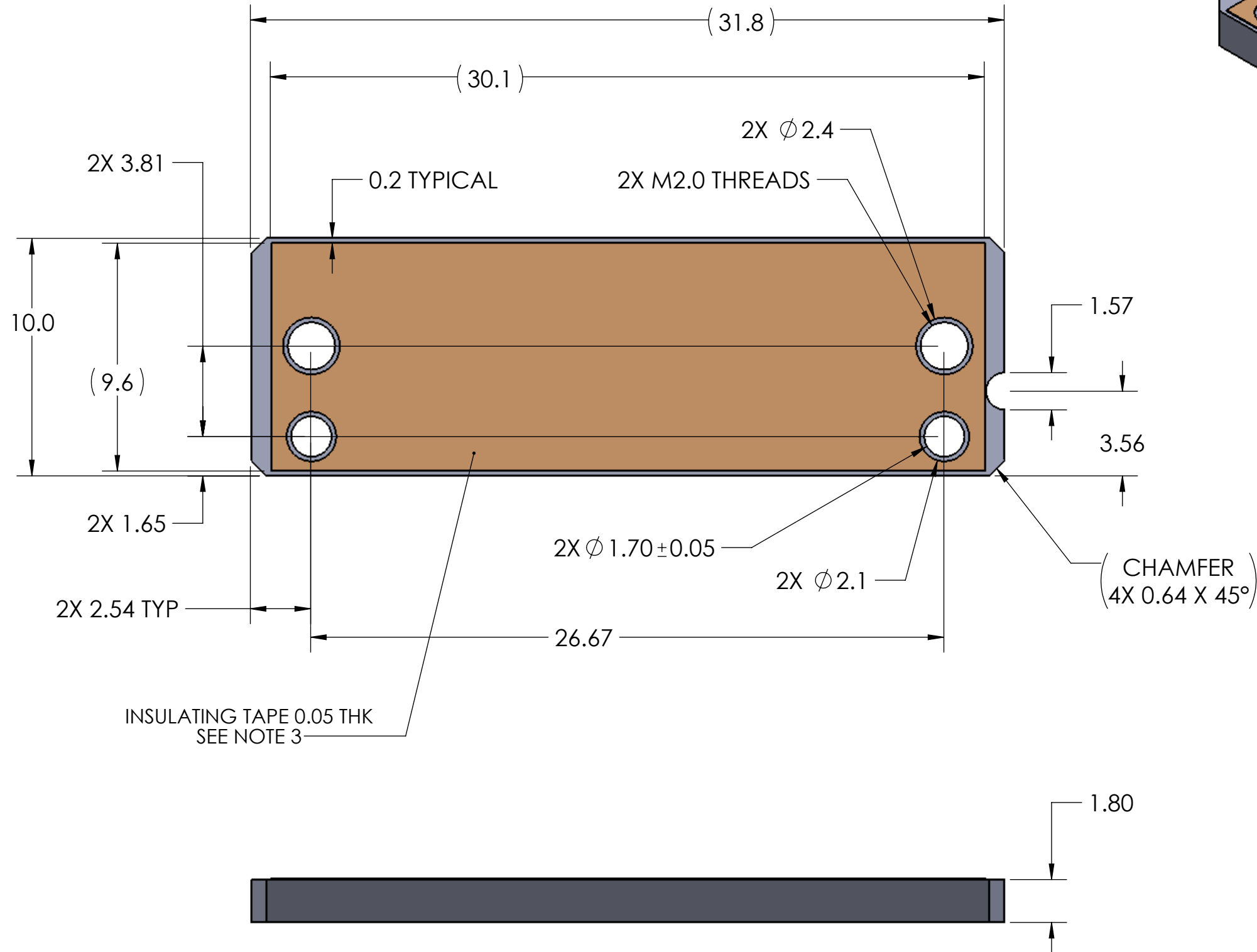


- PROPRIETARY INFORMATION -  
NO USE OR REPRODUCTION MAY BE MADE OF  
THIS DOCUMENT WITHOUT EXPRESS WRITTEN  
PERMISSION OF NEOCONIX.

REVISIONS				
REV	ECN	DESCRIPTION	DATE	APPROVED
A	1241	PRODUCTION RELEASE	05-30-2019	WES TAO
B	1252	ADD INSULATING TAPE	08-08-2019	WES TAO
C	1258	UPDATED TOLERANCES	09-16-2019	WES TAO



1. MATERIAL SS304 OR SS316
2. COMPLIANT WITH RoHS DIRECTIVE 2011/65/EU
3. INSULATING TAPE TESA8853 OR EQUIVALENT

<p>4020 MOORPARK AVENUE #108 SAN JOSE, CA 95117 USA TEL: 408-530-9393 FAX: 408-530-9383</p>	DIMENSIONS ARE IN MM		MATERIAL: SEE NOTES		TITLE: SPH1, SPH2 BOTTOM STIFFENER, SIZE S	
	.X ±0.13	.XX ±0.08	FINISH:	DRAWN BY: W.B.LONG	05-30-2019	SIZE: B+
	.XXX ±0.025	ANGLE: NO DEC ±2 DEGREE	CHECKED BY:	ENGR APPR:	MFG APPR:	DWG NUMBER: B01-000629
	.X ±	.XX ±	QA APPR:	MFG APPR:	QA APPR:	REV: C
THIRD ANGLE		SCALE: 5:1		SHEET 1 OF 1		