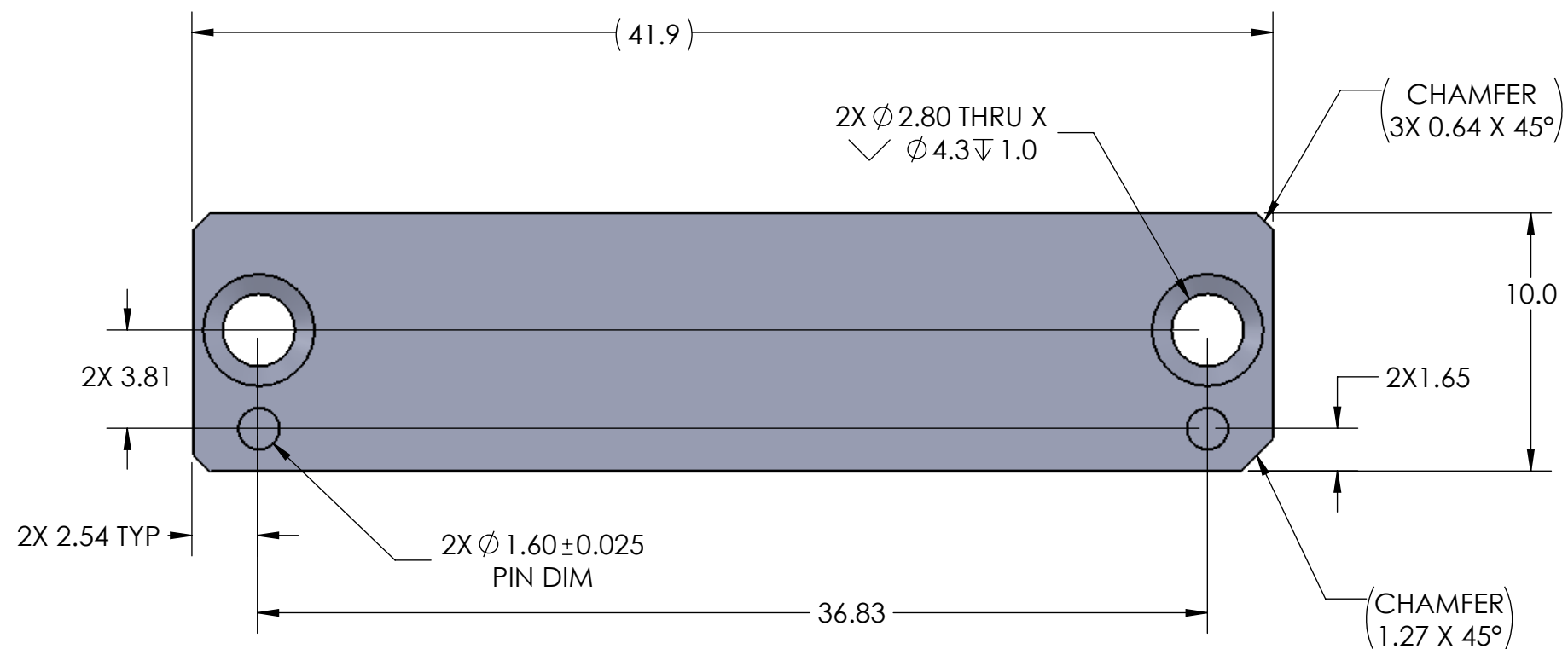
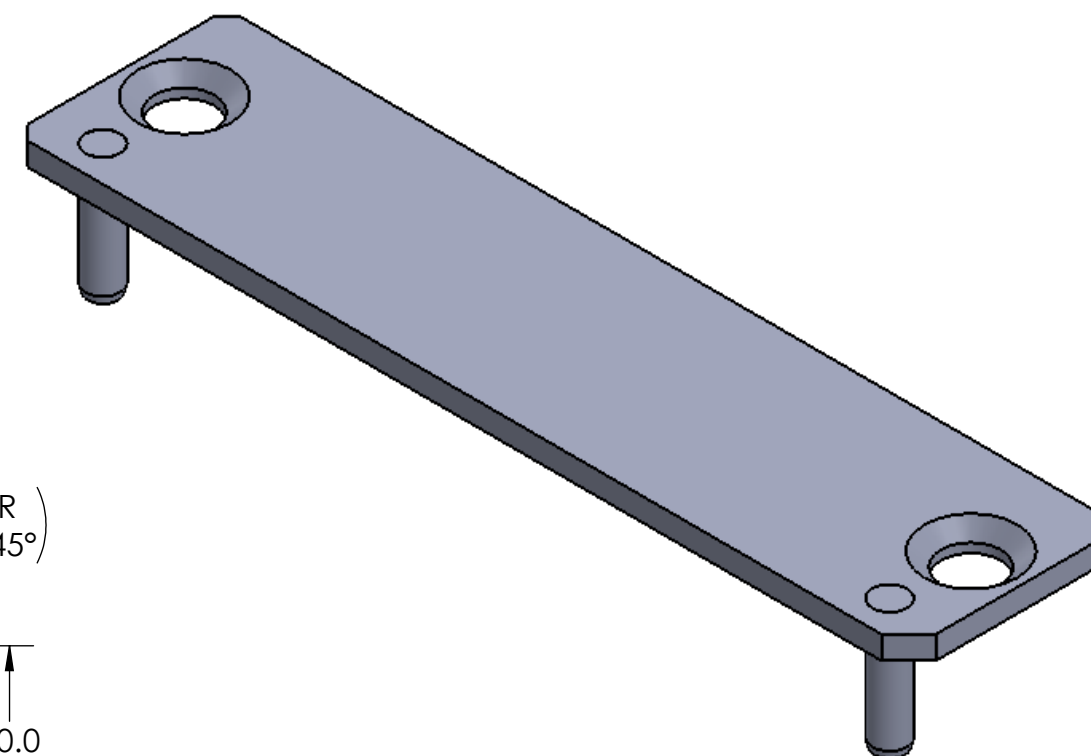


- PROPRIETARY INFORMATION -
NO USE OR REPRODUCTION MAY BE MADE OF
THIS DOCUMENT WITHOUT EXPRESS WRITTEN
PERMISSION OF NEOCONIX.

| REVISIONS | | | | |
|-----------|------|---------------------|------------|----------|
| REV | ECN | DESCRIPTION | DATE | APPROVED |
| A | 1241 | PRODUCTION RELEASE | 05-30-2019 | WES TAO |
| B | 1252 | MOVED CHAMFER POS 1 | 08-08-2019 | WES TAO |
| C | 1258 | UPDATED TOLERANCES | 09-16-2019 | WES TAO |



| L | PART NO |
|-------|-----------------|
| 5 MM | B01-000623-L050 |
| 6 MM | B01-000623-L060 |
| 7 MM | B01-000623-L070 |
| 8 MM | B01-000623-L080 |
| 9 MM | B01-000623-L090 |
| 10 MM | B01-000623-L100 |
| 11 MM | B01-000623-L110 |
| 12 MM | B01-000623-L120 |

- MATERIAL SS304 OR SS316
- COMPLIANT WITH RoHS DIRECTIVE 2011/65/EU

neconix
4020 MOORPARK AVENUE #108
SAN JOSE, CA 95117 USA
TEL: 408-530-9393 FAX: 408-530-9383

DIMENSIONS ARE IN MM
.X \pm 0.13
.XX \pm 0.08
.XXX \pm 0.025
ANGLE: NO DEC \pm 2 DEGREE
.X \pm
.XX \pm

MATERIAL: SEE NOTES
FINISH:
DRAWN BY: W.B.LONG 05-30-2019
CHECKED BY:
ENGR APPR:
MFG APPR:
QA APPR:

TITLE: SPH1, SPH2 TOP STIFFENER, SIZE L
SIZE: B+
DWG NUMBER: B01-000623-LXXX
REV: C
SCALE: 4:1
SHEET 1 OF 1

