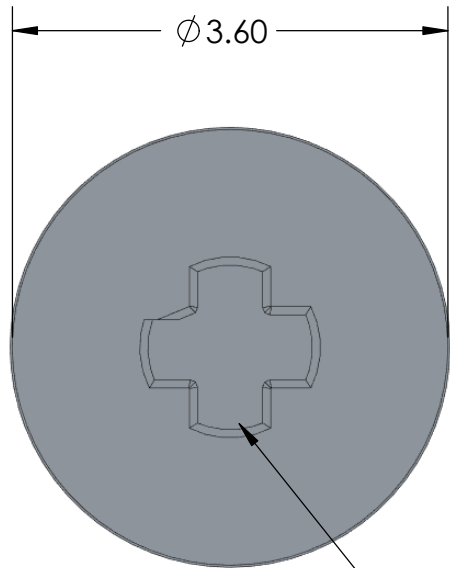
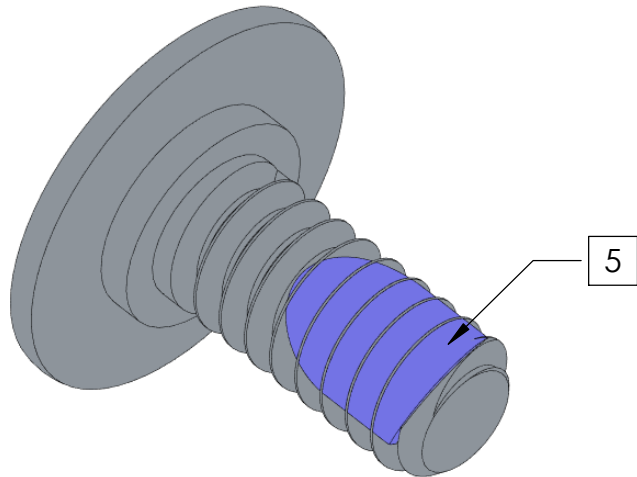
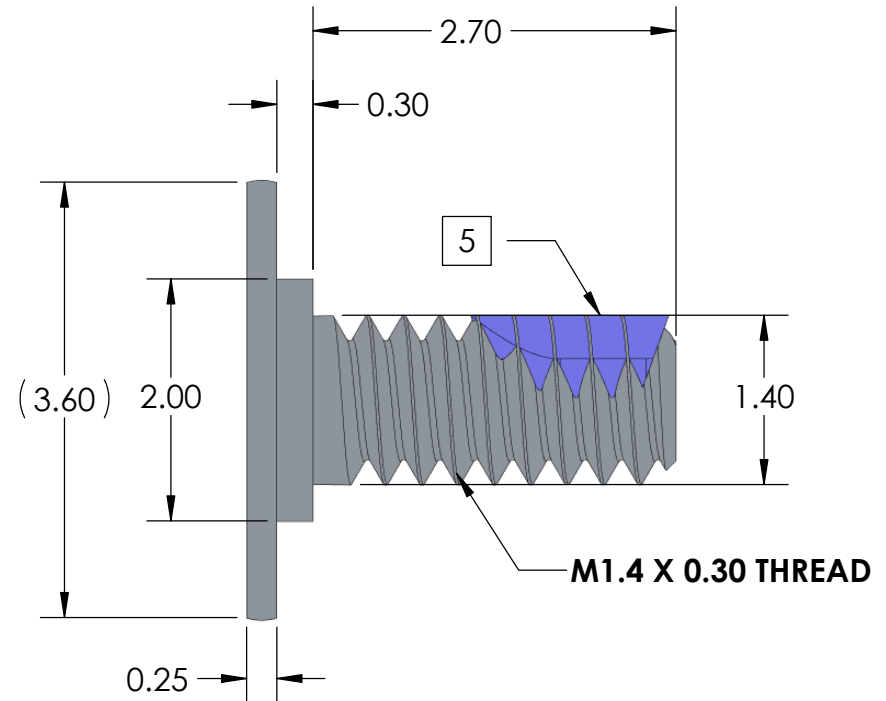


REVISIONS				
REV	ECN #	DESCRIPTION	DATE	DRAWN BY:
1	0000	PRODUCT RELEASED	08/12/2014	TAN
2	1277	CHANGE SCREW HEAD TO #0-PHILLIPS DRIVE	11/12/2020	TAN



#0-PHILLIPS DRIVE



NOTES (UNLESS OTHERWISE SPECIFIED):

1. INTERPRET DRAWING PER ASME Y14.5-94.
2. COMPLIANT WITH RoHS DIRECTIVE 2011/65/EU.
3. **MATERIAL:** AISI 1018.
4. **FINISH:** BRIGHT NICKEL PER ASTM B689-97, TYPE 2, CLASS S.
5. **THREADLOCK:** NYLOK-BLUE, FIRST 2-3 WHOLE THREADS, 75°-150° COVERAGE.
6. SCREW FIT TOLERANCE DOES NOT INCLUDE THREADLOCK.
7. PART TO BE FREE OF BURRS AND SHARP EDGES.

DIMENSIONS ARE IN mm TOLERANCES (unless otherwise specified): ANGULAR: ± 2 degree LINEAR: .X ±0.13 .XX ±0.08 .XXX ±0.025	NAME	DATE	4020 MOORPARK AVE., SUITE 108. SAN JOSE, CA 95117 TEL: 408-530-9393 FAX: 408-530-9383	
	DRAWN	Tan Nguyen		08/12/2014
	CHECKED			
	Appr			
	Release level	RELEASED		
MATERIAL	AISI1018		Title: SCREW, M1.4 X .30PITCH x 3mm-LG	
FINISH				
COMMENTS:		projection	DWG. NO. B01-000614	
DO NOT SCALE DRAWING				
		SIZE A	REV 2	
		SCALE:5:1		
		WEIGHT:	SHEET 1 OF 1	