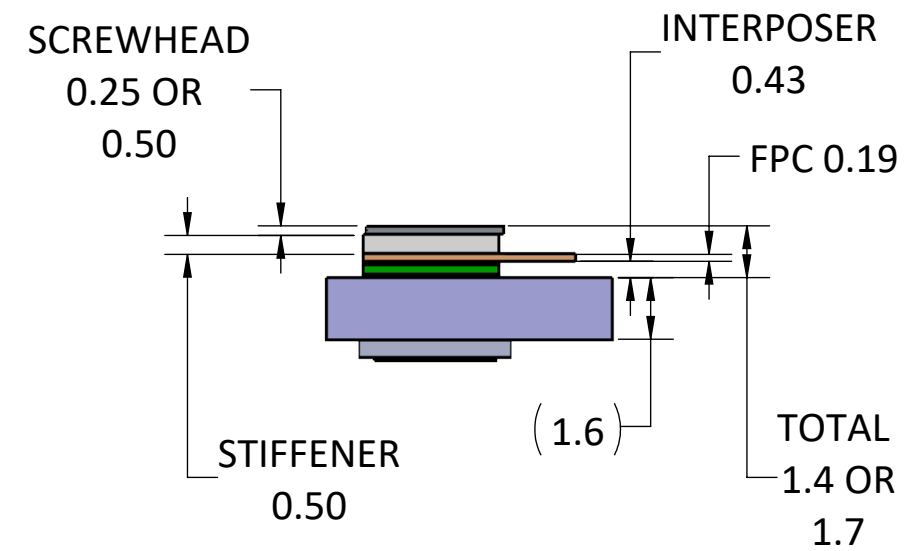
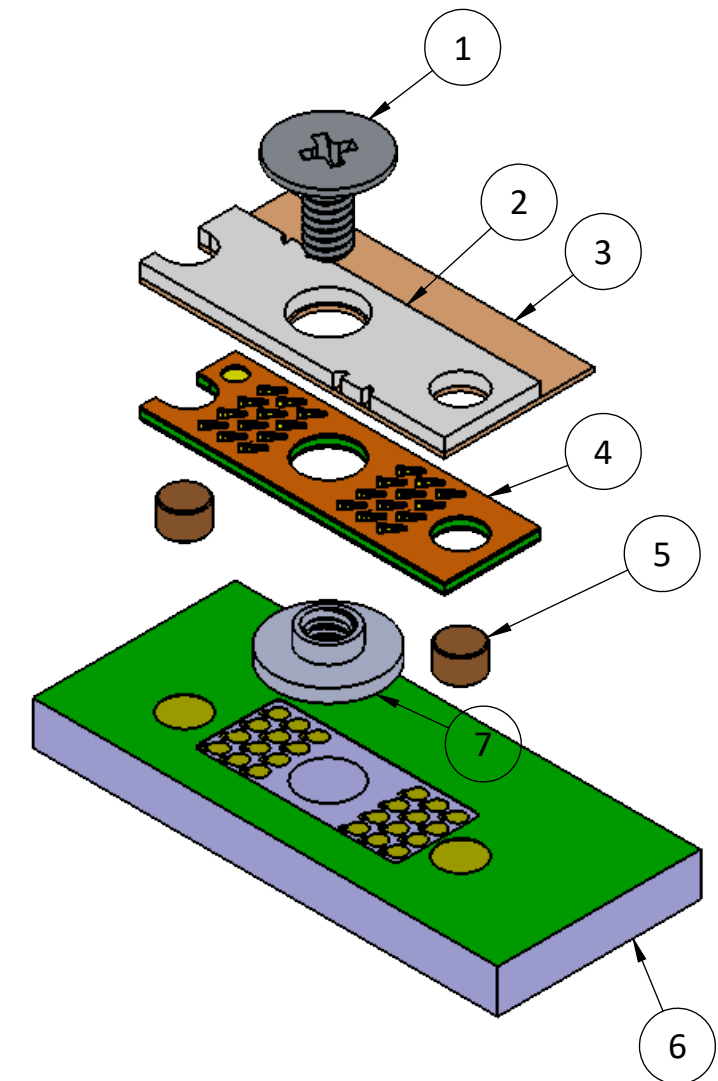
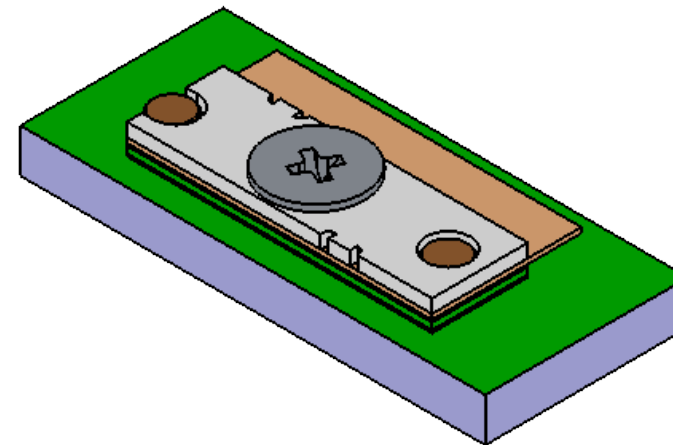
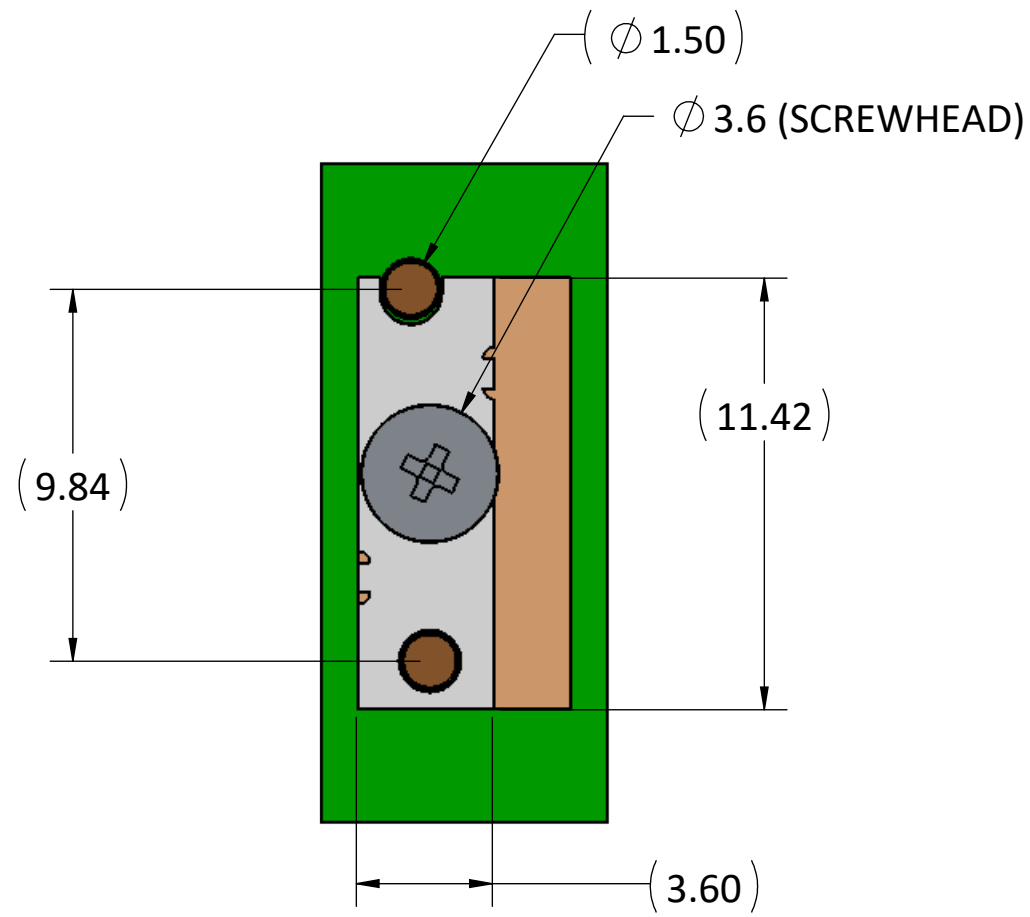


- PROPRIETARY INFORMATION -
NO USE OR REPRODUCTION MAY BE MADE OF
THIS DOCUMENT WITHOUT EXPRESS WRITTEN
PERMISSION OF NEOCONIX.

| REVISIONS | | | | |
|-----------|------|-------------------------------|------------|----------|
| REV | ECN | DESCRIPTION | DATE | APPROVED |
| A | 1231 | PRODUCTION RELEASE | 04-10-2019 | WES TAO |
| B | 1277 | CHANGE TO PHILLIPS HEAD SCREW | 10-30-2020 | WES TAO |
| C | 1285 | ADDED STIFFENER BREAK TABS | 03-01-2021 | WES TAO |



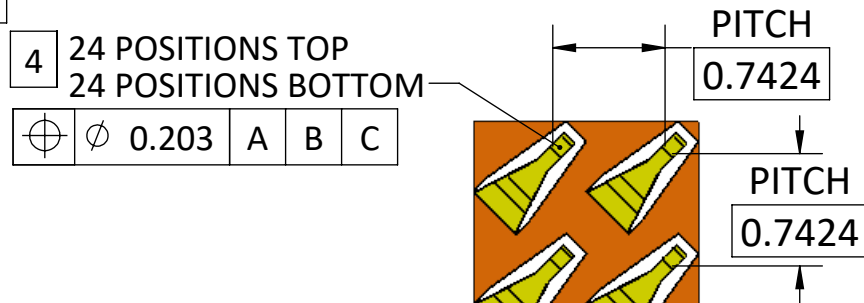
| ITEM | DESCRIPTION | NEOCONIX P/N | QTY per ASSY |
|------|--------------------|-------------------------|--------------|
| 1* | SCREW, M1.4, L=3MM | B01-000614 | 1 |
| | SCREW, M1.4, L=4MM | B01-000657 | |
| | SCREW, M1.4, L=5MM | B01-000658 | |
| 2 | STIFFENER | LPM-024A-STF | 1 |
| 3 | FPC | CUSTOM UPON REQUEST | 1 |
| 4 | INTERPOSER | LPM-024A | 1 |
| 5 | ALIGNMENT PIN | B01-000589 | 2 |
| 6 | PCB | N/A - CUSTOMER SUPPLIED | 1 |
| 7 | SMT NUT, M1.4 | B01-000581 | 1 |

* SEE AS-000021 FOR RECOMMENDED SCREW LENGTH.
ALL ITEMS ORDERED SEPARATELY.

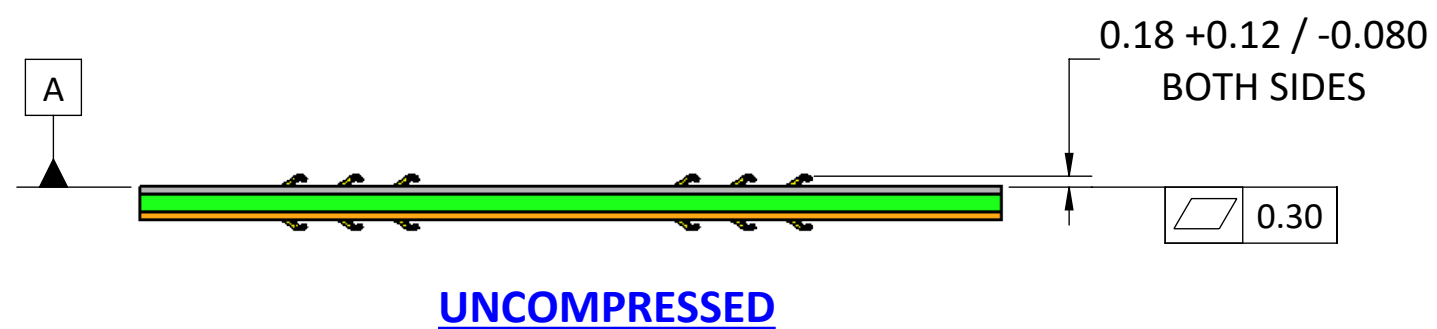
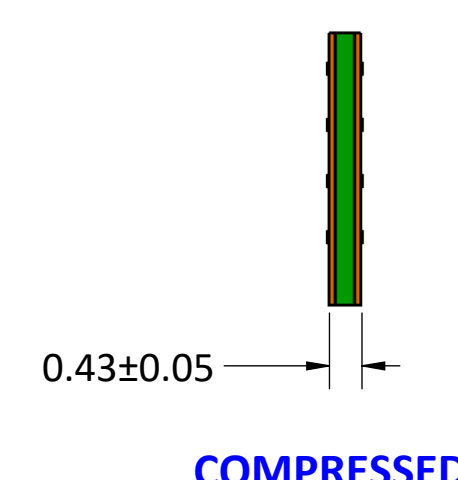
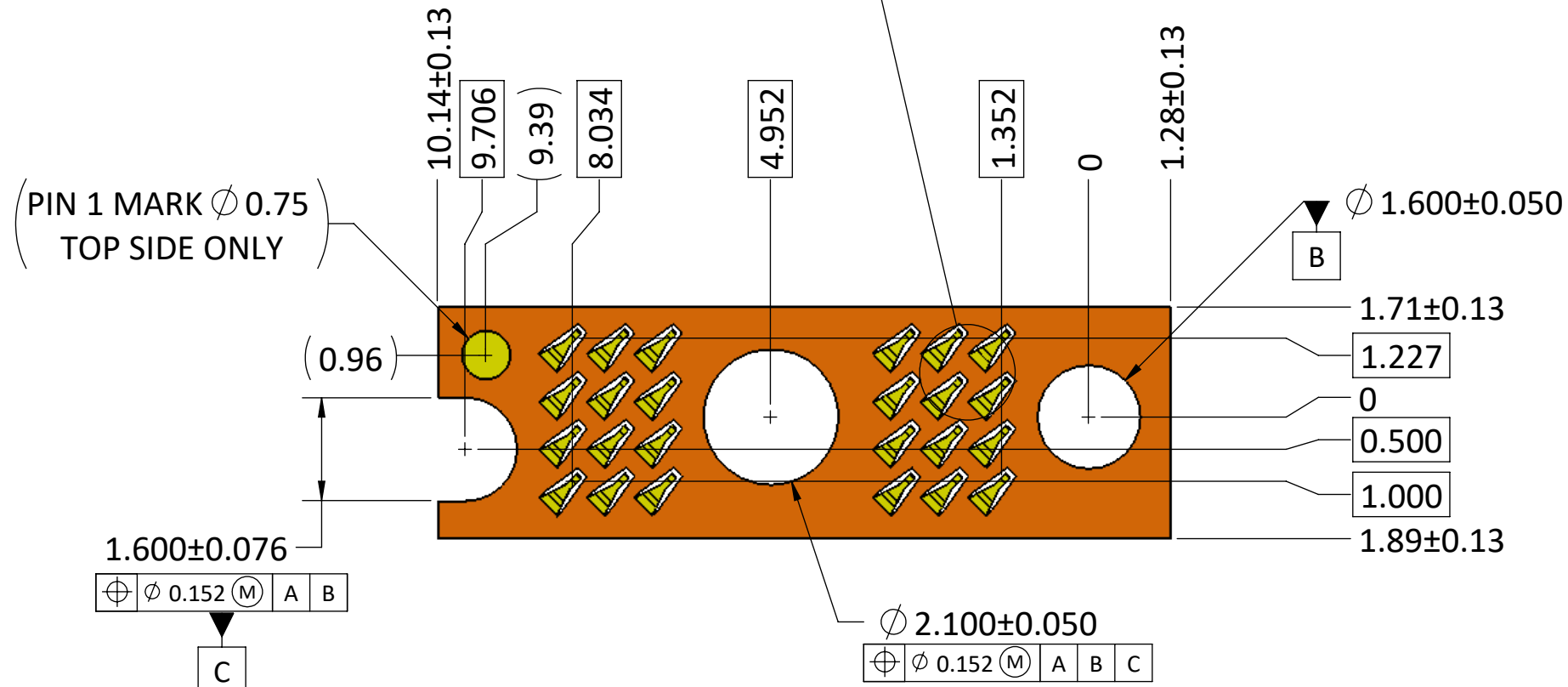
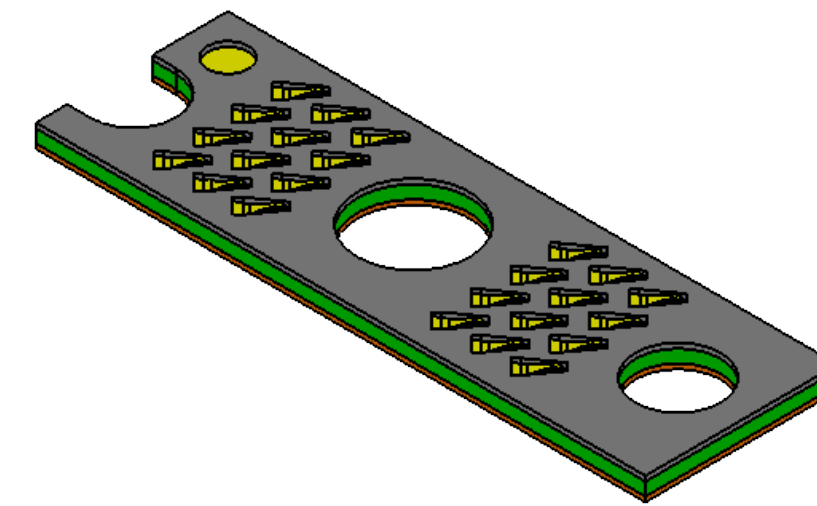
| | | | | | | |
|---|--|---------------------------|-------------------|--|---------------------|------------|
| <p>4020 MOORPARK AVENUE #108 SAN JOSE, CA 95117 USA TEL: 408-530-9393 FAX: 408-530-9383</p> | <p>DIMENSIONS ARE IN MM [INCH]</p> <p>.X ± .XX ± .XXX ±</p> <p>ANGLE: NO DEC ± .X ± .XX ±</p> <p>THIRD ANGLE</p> | <p>MATERIAL:</p> | | <p>TITLE:</p> | | |
| | | <p>FINISH:</p> | | <p>LPM ASSEMBLY 24 POSITIONS LGA-LGA</p> | | |
| | | <p>DRAWN BY: JASON WU</p> | <p>02-09-2015</p> | <p>SIZE</p> | <p>DWG NUMBER:</p> | <p>REV</p> |
| | | <p>CHECKED BY:</p> | <p>ENGR APPR:</p> | <p>B+</p> | <p>LPM-024A-ASY</p> | <p>C</p> |
| <p>MFG APPR:</p> | | <p>QA APPR:</p> | | <p>SCALE: 5:1</p> | <p>SHEET 1 OF 5</p> | |

- PROPRIETARY INFORMATION -
NO USE OR REPRODUCTION MAY BE MADE OF
THIS DOCUMENT WITHOUT EXPRESS WRITTEN
PERMISSION OF NEOCONIX.

| REVISIONS | | | | |
|-----------|------|--------------------|------------|----------|
| REV | ECN | DESCRIPTION | DATE | APPROVED |
| A | 1231 | PRODUCTION RELEASE | 04-10-2019 | WES TAO |



DETAIL B
SCALE 20 : 1



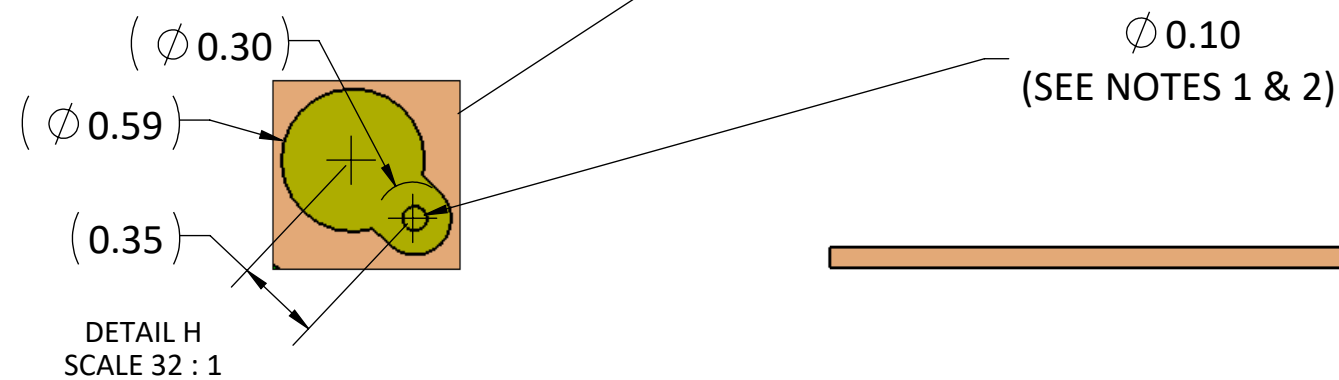
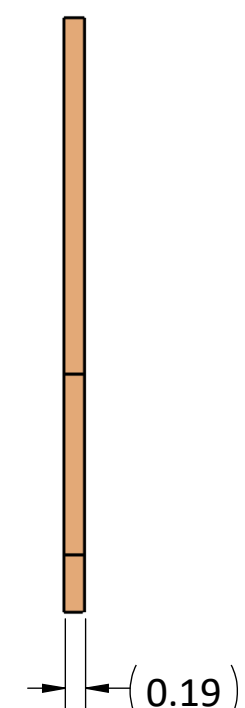
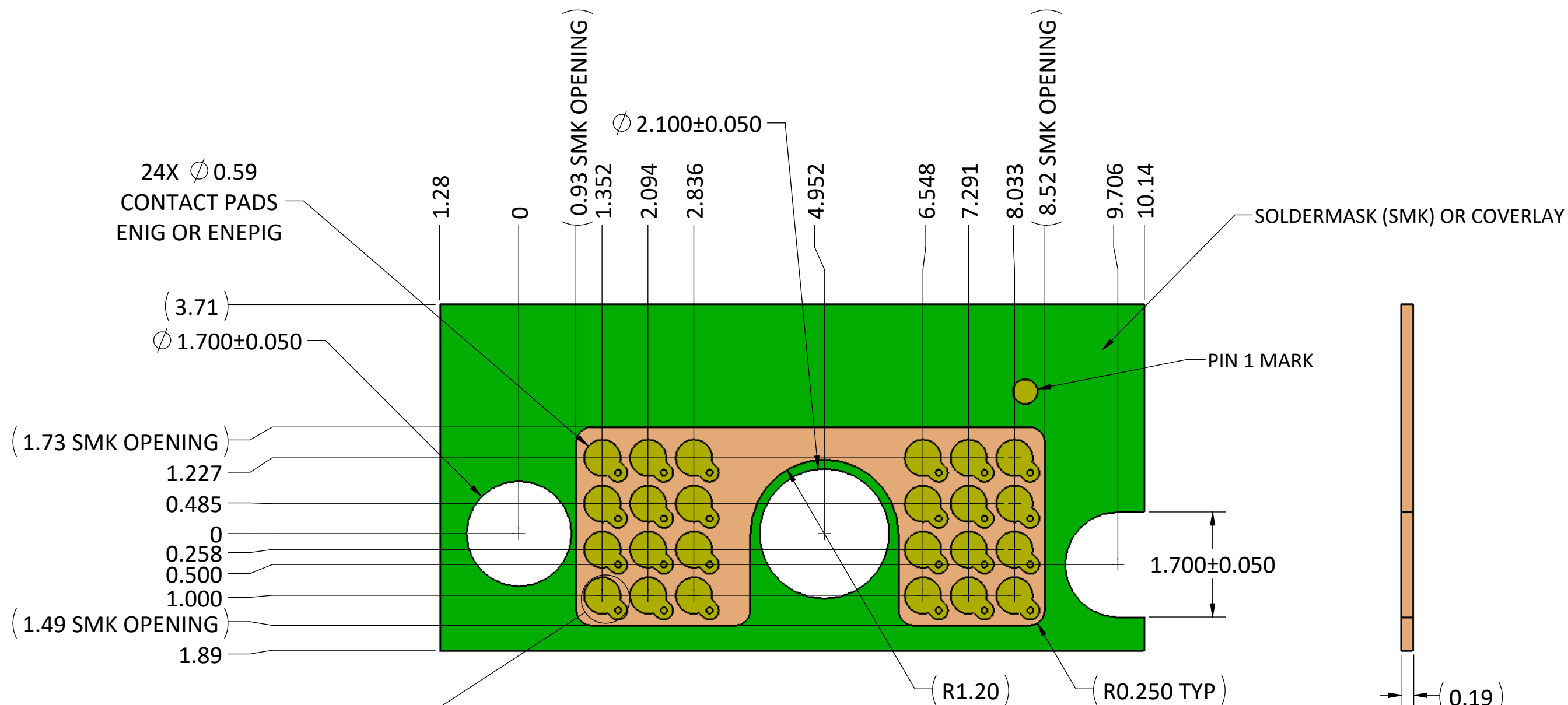
NOTES (UNLESS OTHERWISE SPECIFIED):

1. INTERPRET DRAWING PER ASME Y14.5M-1994.
2. HALOGEN-FREE PER IPC-4101B.
3. COMPLIANT WITH RoHS DIRECTIVE 2011/65/EU.

4 CENTER MARKS OF CONTACT POSITIONS ARE FOR COMPRESSED STATE

| | | | | |
|---|--|--|--|--|
| <p>4020 MOORPARK AVENUE #108 SAN JOSE, CA 95117 USA TEL: 408-530-9393 FAX: 408-530-9383</p> | <p>DIMENSIONS ARE IN MM [INCH] .X ± 0.13 [.005] .XX ± 0.08 [.003] .XXX ± 0.025 [.001] ANGLE: NO DEC ± 1° .X ± 0.5° .XX ± 0.25°</p> | <p>MATERIAL: SEE NOTES FINISH: SEE NOTES</p> | <p>TITLE: LPM INTERPOSER 24 POSITIONS LGA-LGA</p> | |
| | <p>DRAWN BY: Jason Wu 01-29-2015</p> | <p>CHECKED BY: Woody Maynard 02-03-2015</p> | <p>SIZE: B+</p> | <p>DWG NUMBER: LPM-024A</p> |
| | <p>ENGR APPR:</p> | <p>MFG APPR:</p> | <p>QA APPR:</p> | <p>REV: A</p> |
| | <p>SCALE: 10:1</p> | | | <p>SHEET 2 OF 5</p> |

| REVISIONS | | | | |
|-----------|------|--------------------|------------|----------|
| REV | ECN | DESCRIPTION | DATE | APPROVED |
| A | 1231 | PRODUCTION RELEASE | 04-10-2019 | WES TAO |



NOTES:

1. THE PAD GEOMETRY SHOWN ASSUMES A BLIND VIA STACK-UP. IF A THRU-HOLE VIA IS NEEDED, IT IS ACCEPTABLE TO ROTATE THE POSITION OF THE VIAS AS NEEDED TO AVOID INTERFERENCE WITH THE BACK SIDE NUT SOLDER PAD.
2. IF THE VIA NEEDS TO BE LOCATED WITHIN THE 0.59MM PAD DIAMETER, IT MUST BE FILLED, PLATED, AND PLANARIZED WITH 25UM MAX DIMPLE.

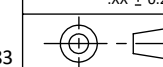
neconix

4020 MOORPARK AVENUE #108
SAN JOSE, CA 95117 USA
TEL: 408-530-9393 FAX: 408-530-9383

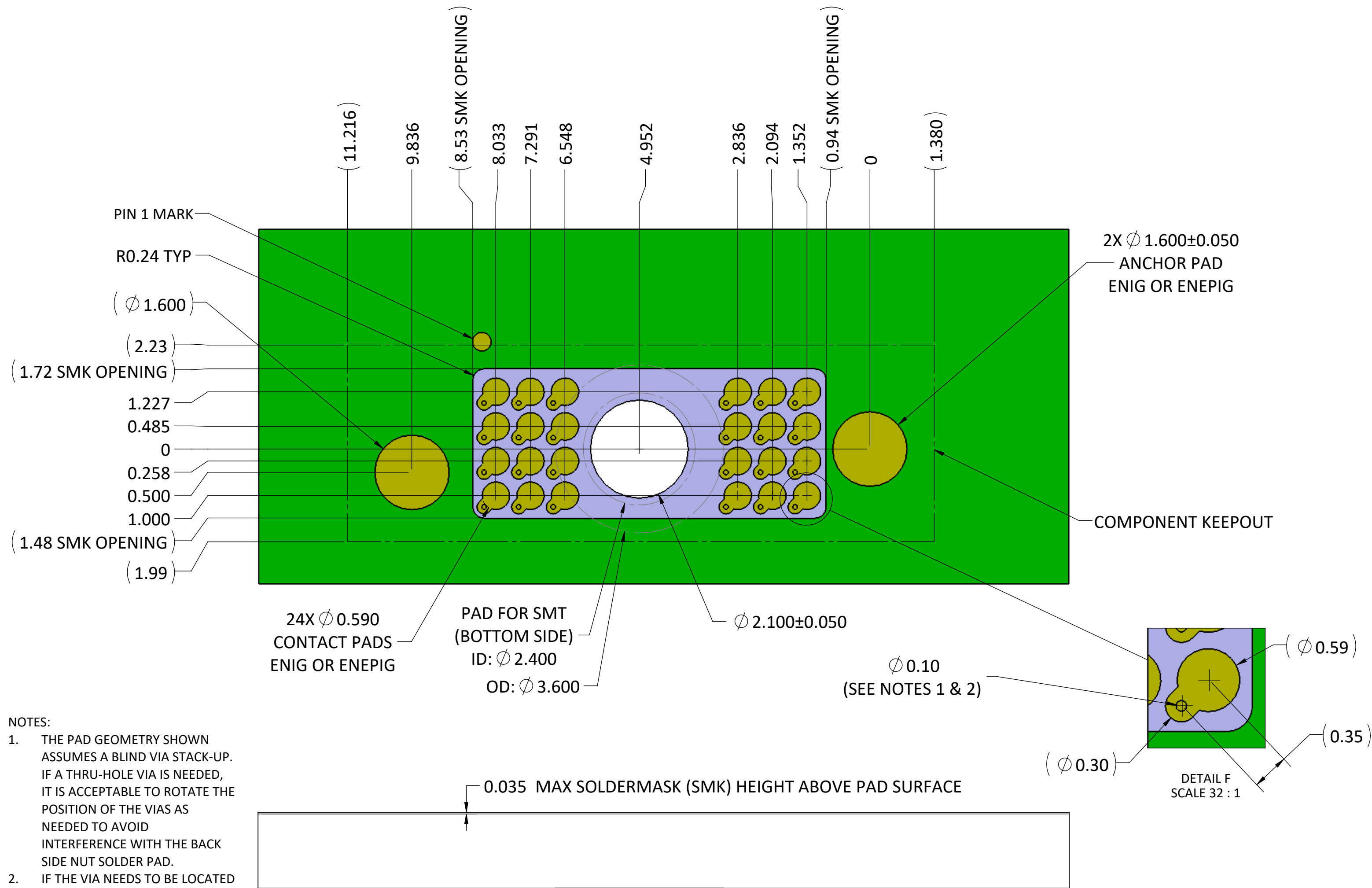
DIMENSIONS ARE IN
MM [INCH]
.X \pm 0.13 [.005]
.XX \pm 0.08 [.003]
.XXX \pm 0.025 [.001]
ANGLE: NO DEC \pm 1°
.X \pm 0.5°
.XX \pm 0.25°

| | |
|--------------------|------------|
| MATERIAL: | |
| FINISH: | |
| DRAWN BY: JASON WU | 02-09-2015 |
| CHECKED BY: | |
| ENGR APPR: | |
| MFG APPR: | |
| QA APPR: | |

| | |
|--|-----------------------------|
| TITLE: RECOMMENDED FPC LAYOUT LPM 24 POSITIONS | |
| SIZE: B+ | DWG NUMBER: LPM-024A-FPC |
| SCALE: 10:1 | SHEET 3 OF 5 |



| REVISIONS | | | | |
|-----------|------|--------------------|------------|----------|
| REV | ECN | DESCRIPTION | DATE | APPROVED |
| A | 1231 | PRODUCTION RELEASE | 04-10-2019 | WES TAO |



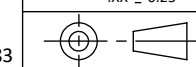
- NOTES:
1. THE PAD GEOMETRY SHOWN ASSUMES A BLIND VIA STACK-UP. IF A THRU-HOLE VIA IS NEEDED, IT IS ACCEPTABLE TO ROTATE THE POSITION OF THE VIAS AS NEEDED TO AVOID INTERFERENCE WITH THE BACK SIDE NUT SOLDER PAD.
 2. IF THE VIA NEEDS TO BE LOCATED WITHIN THE 0.59MM PAD DIAMETER, IT MUST BE FILLED, PLATED, AND PLANARIZED WITH 25UM MAX DIMPLE.

neconix
4020 MOORPARK AVENUE #108
SAN JOSE, CA 95117 USA
TEL: 408-530-9393 FAX: 408-530-9383

DIMENSIONS ARE IN
MM [INCH]
.X ± 0.13 [.005]
.XX ± 0.08 [.003]
.XXX ± 0.025 [.001]
ANGLE: NO DEC ± 1°
.X ± 0.5°
.XX ± 0.25°

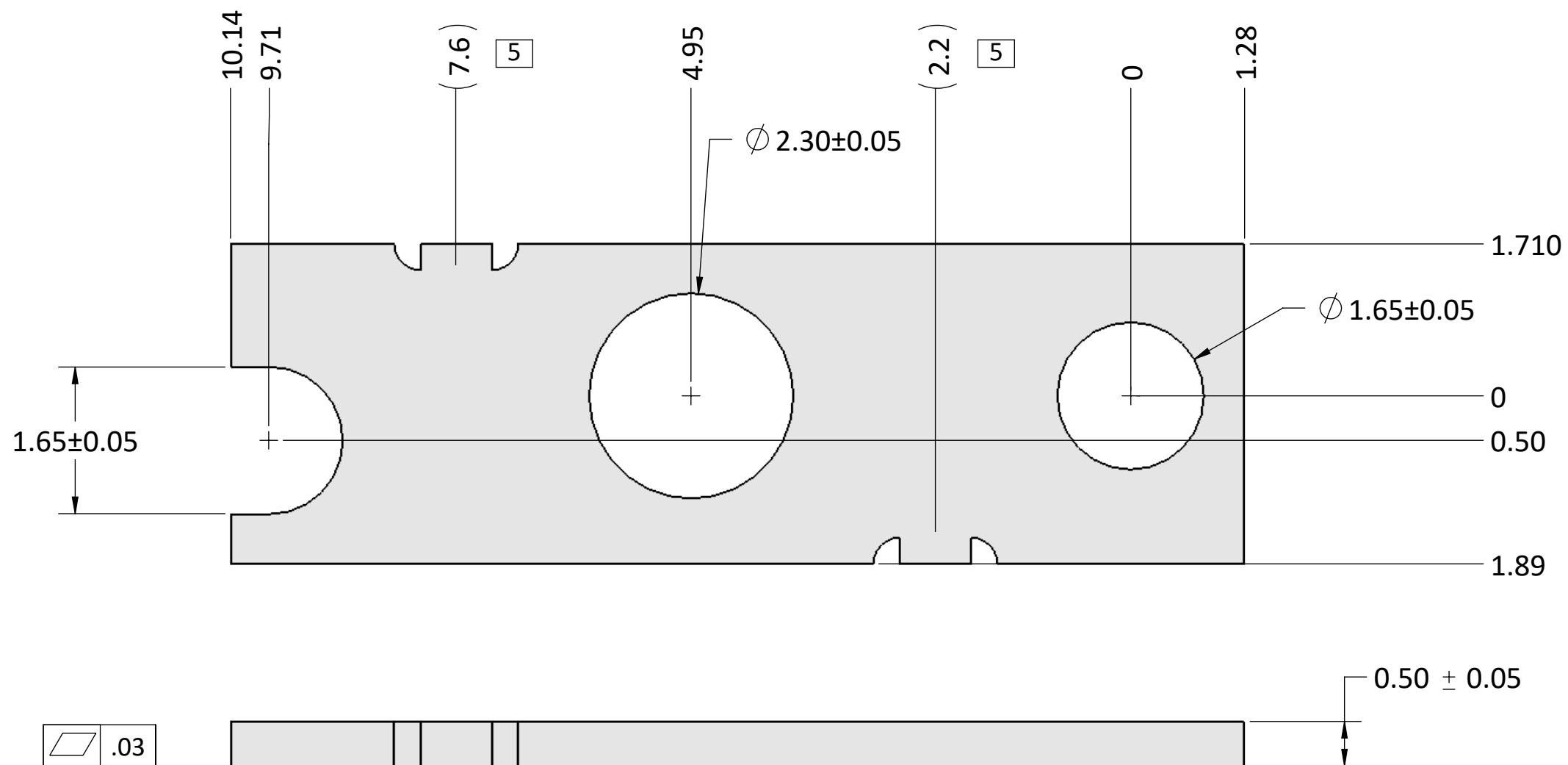
MATERIAL:
FINISH:
DRAWN BY: JASON WU 02-09-2015
CHECKED BY:
ENGR APPR:
MFG APPR:
QA APPR:

TITLE:
**RECOMMENDED PCB LAYOUT
LPM 24 POSITIONS**
SIZE: B+
DWG NUMBER: LPM-024A-PCB
REV: A
SCALE: 10:1 SHEET 4 OF 5



- PROPRIETARY INFORMATION -
NO USE OR REPRODUCTION MAY BE MADE OF
THIS DOCUMENT WITHOUT EXPRESS WRITTEN
PERMISSION OF NEOCONIX.

| REVISIONS | | | | |
|-----------|------|----------------------------|------------|----------|
| REV | ECN | DESCRIPTION | DATE | APPROVED |
| A | 1231 | PRODUCTION RELEASE | 04-10-2019 | WES TAO |
| B | 1285 | ADDED BREAK TABS, STD TOLS | 03-01-2021 | WES TAO |



NOTES (UNLESS OTHERWISE SPECIFIED):

1. INTERPRET DRAWING PER ASME Y14.5M-1994.
2. USE THERMOSETTING ADHESIVE FILM TO ATTACH TO FPC.
3. RECOMMEND 0.15MM CLEARANCE BETWEEN EDGE OF ADHESIVE AND EDGE/HOLE FEATURES TO ACCOMODATE ADHESIVE FLOW.
4. MATERIAL: 301 SS FULL HARD
5. BREAK APPROXIMATELY AS SHOWN: NOT TO EXTEND BEYOND EDGE OF STIFFENER

neconix
4020 MOORPARK AVENUE #108
SAN JOSE, CA 95117 USA
TEL: 408-530-9393 FAX: 408-530-9383

DIMENSIONS ARE IN MM
.X ± 0.13
.XX ± 0.08
.XXX ± 0.025
ANGLE: NO DEC ± 1°
.X ± 0.5°
.XX ± 0.25°
THIRD ANGLE

MATERIAL: SEE NOTES
FINISH: SEE NOTES
DRAWN BY: JASON WU 07-31-2015
CHECKED BY:
ENGR APPR:
MFG APPR:
QA APPR:

TITLE:
STIFFENER, LPM 24 POSITIONS
SIZE: B+
DWG NUMBER: LPM-024A-STF
REV: B
SCALE: 10:1 SHEET 5 OF 5