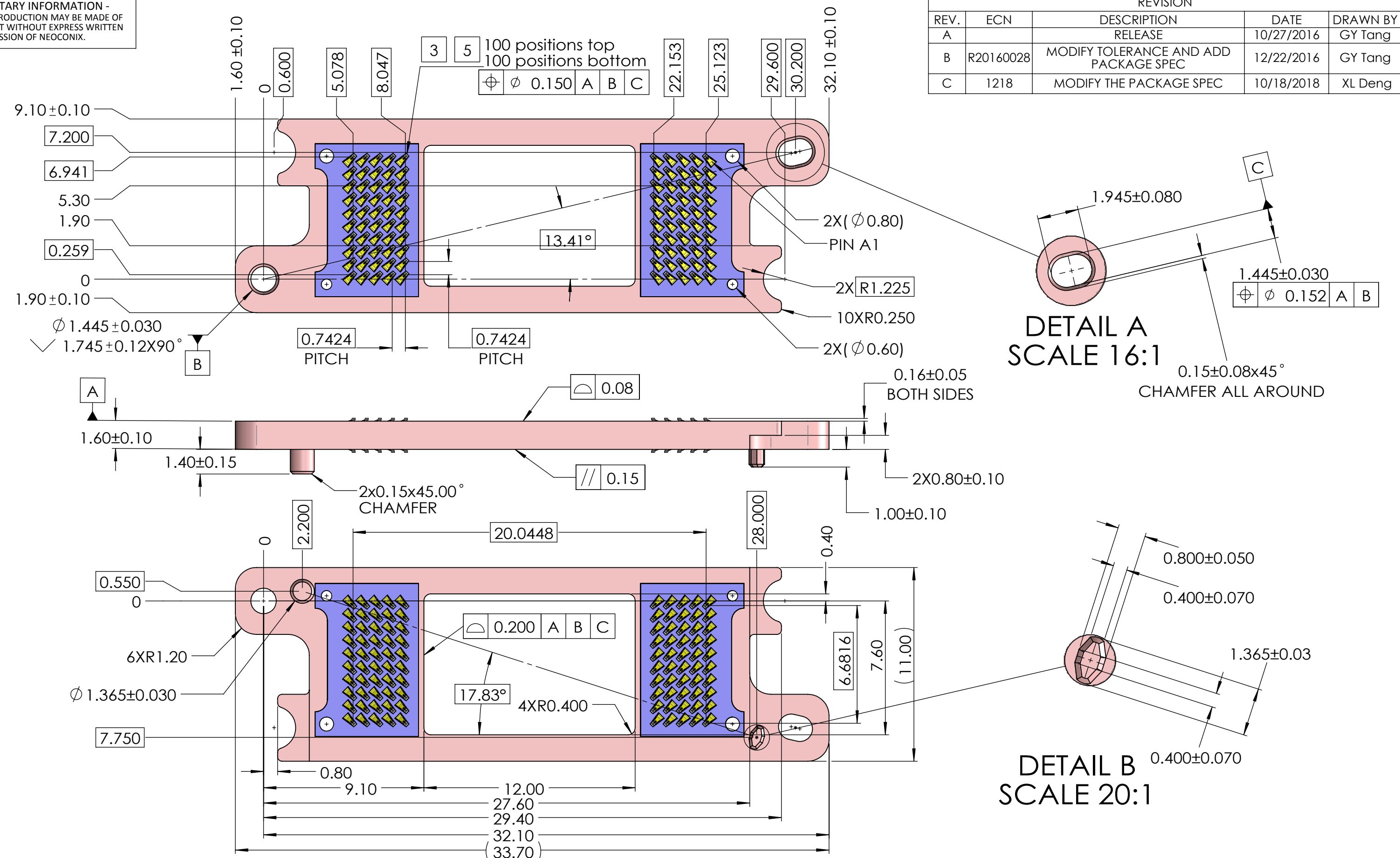


- PROPRIETARY INFORMATION -
NO USE OR REPRODUCTION MAY BE MADE OF
THIS DOCUMENT WITHOUT EXPRESS WRITTEN
PERMISSION OF NEOCONIX.

REVISION				
REV.	ECN	DESCRIPTION	DATE	DRAWN BY
A		RELEASE	10/27/2016	GY Tang
B	R20160028	MODIFY TOLERANCE AND ADD PACKAGE SPEC	12/22/2016	GY Tang
C	1218	MODIFY THE PACKAGE SPEC	10/18/2018	XL Deng



NOTES (UNLESS OTHERWISE SPECIFIED) :

1. INTERPRET DRAWING PER ASME Y14.5M-1994.
2. COMPLIANT WITH RoHS DIRECTIVE 2011/65/EU.
3. CENTER MARKS OF CONTACT POSITIONS ARE FOR COMPRESSED STATE.
4. Material :
Contacts: High performance copper alloy.
Contact base: FR4 with plated through holes.
Housing: LCP resin, Glass fiber filled, UL 94V-0 rated.
Black color
Plating: 5 U" min gold plated on contact tip, 70 ± 30 U" nickel underplated.
5. Either of the redundant contact tips can apply toward the true position location.

	DIMENSIONS ARE IN MM [INCH] .X ± 0.13 [.005] .XX ± 0.08 [.003] .XXX ± 0.025 [.001] ANGLE: NO DEC ± 1° .X ± 0.5° .XX ± 0.25°		MATERIAL: SEE NOTES FINISH: SEE NOTES		TITLE: 0.7424mm PITCH LGA-LGA 100 POS INTERPOSER(DMD 312)	
	4020 Moorpark Ave, #108 San Jose, CA 95117 TEL: 408-530-9393 FAX: 408-530-9383		DRAWN BY: XL Deng 10/20/2018 CHECKED BY: Jason Wu 10/20/2018 ENGR APPR: Gary Hsieh 10/20/2018 MFG APPR: QA APPR:		SIZE: B+ DWG NUMBER: BDX0100CMMHFAU00 SCALE: 10:1	

A

B

C

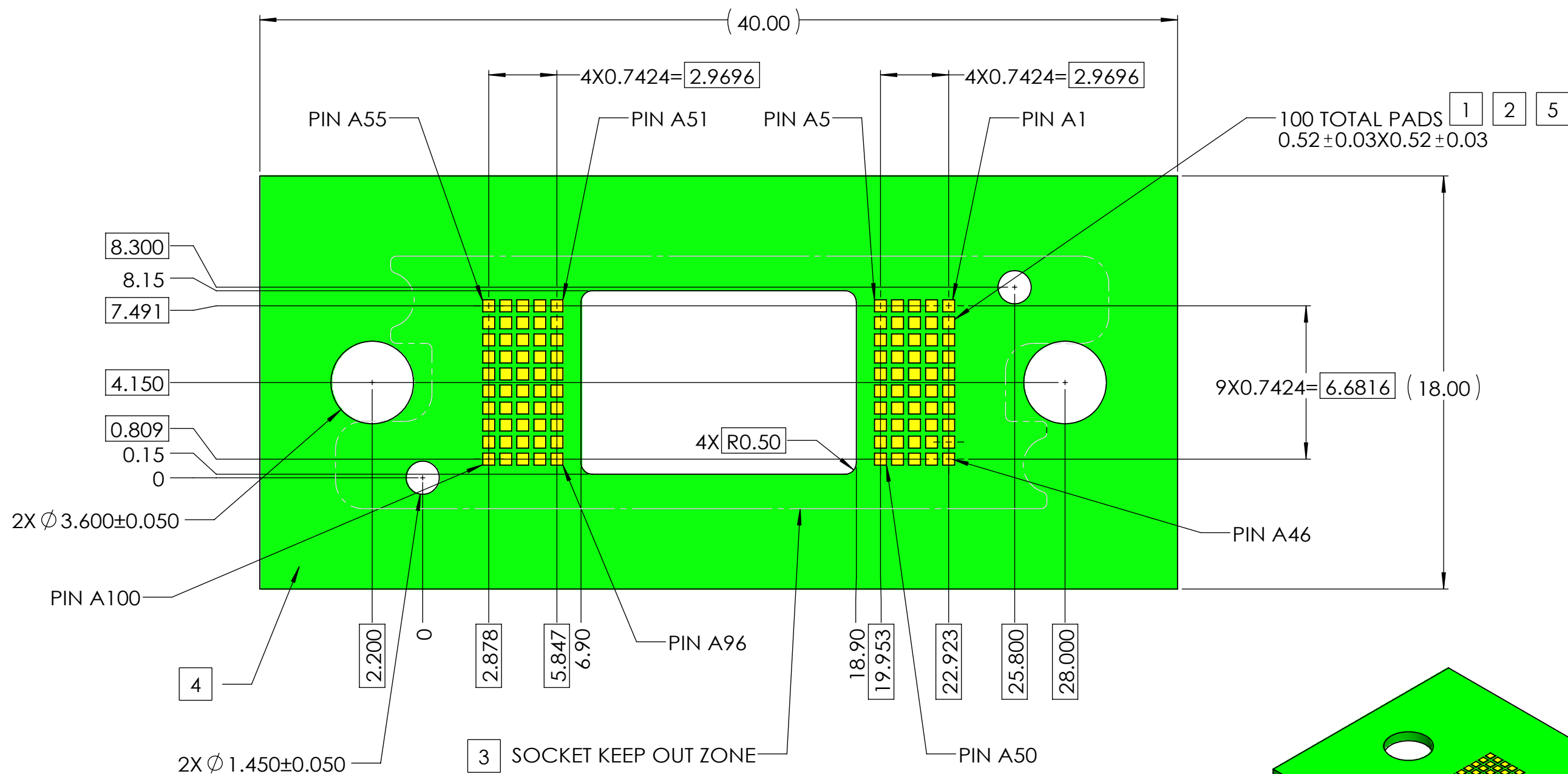
D

A

B

C

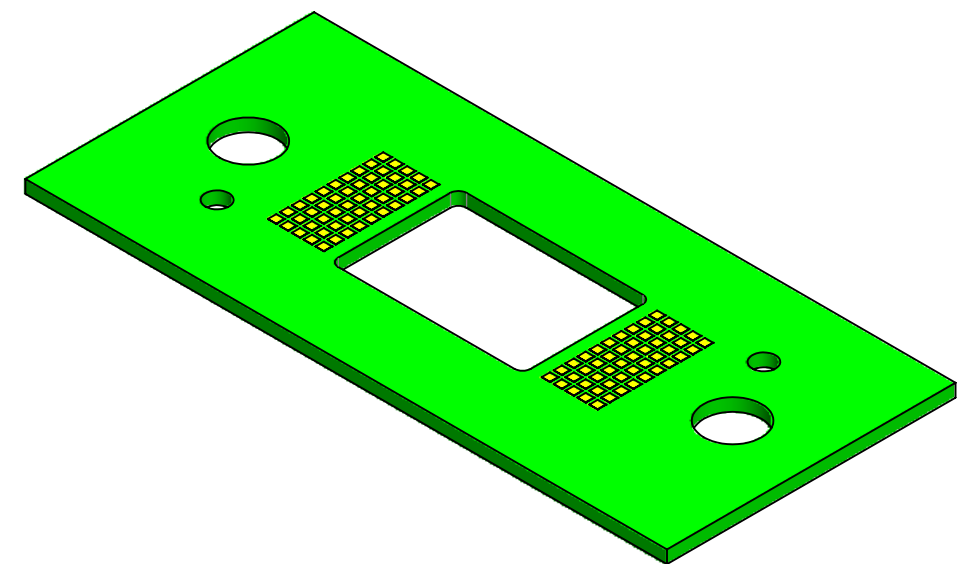
D



recommend PCB footprint

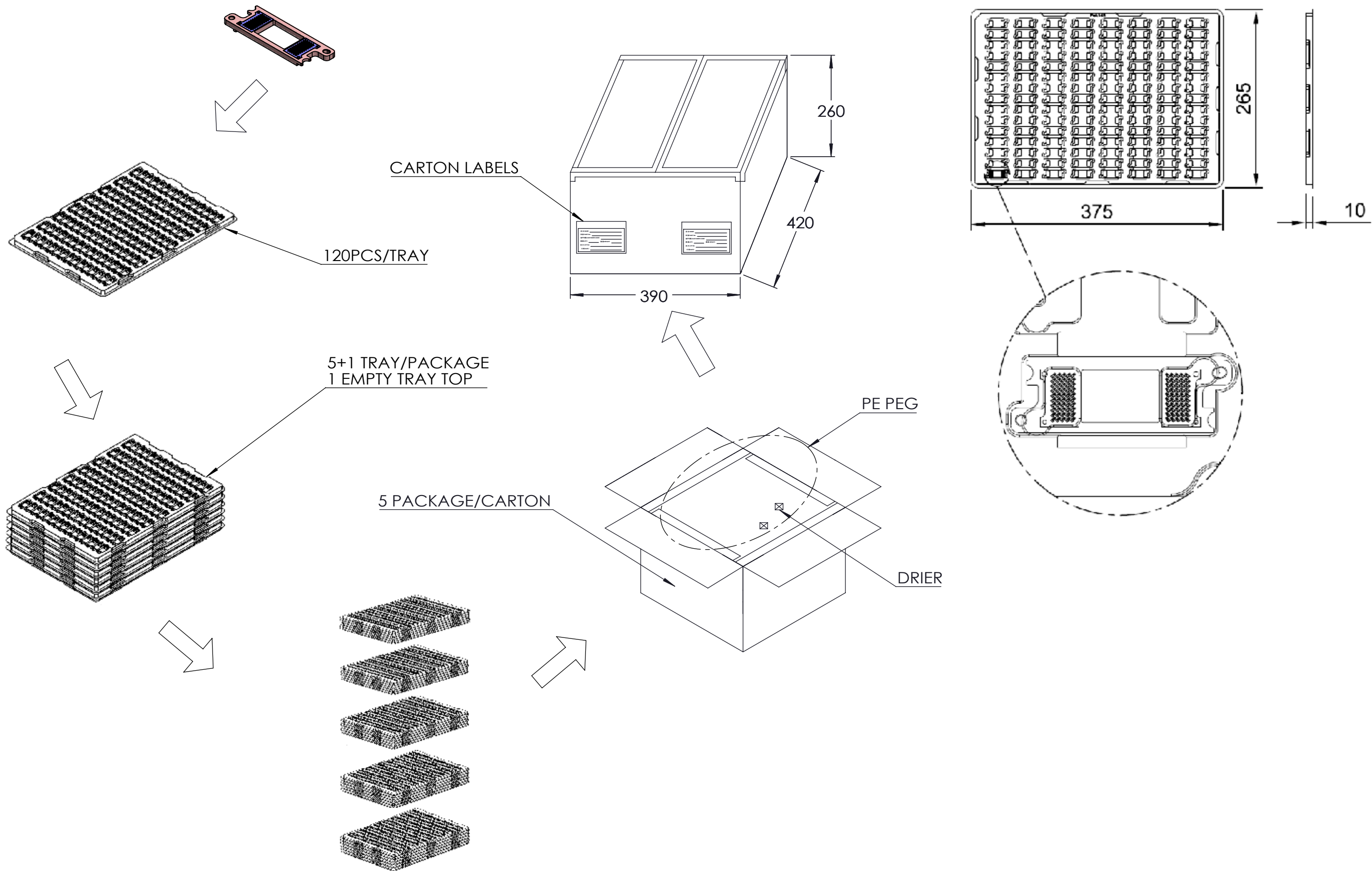
NOTES: UNLESS OTHERWISE SPECIFIED:

- 1 PADS TO BE ELECTROLESS NICKEL / IMMERSION GOLD (ENIG) PLATED.
- 2 VIAS IN PAD AREAS MUST BE FILLED.
- 3 INTERPOSER OUTLINE; NO COMPONENTS ALLOWED WITHIN THIS AREA.
- 4 ALLOWED COMPONENT AREA; MAXIMUM COMPONENT HEIGHT 1.3 mm.
- 5 IF SOLDERMASK IS APPLIED IN THE ARRAY AREA. IT SHALL NOT PROTRUDE ABOVE THE PLANE OF THE CONTACT PAD SURFACE.



<p>4020 Moorpark Ave, #108 San Jose, CA 95117 TEL: 408-530-9393 FAX: 408-530-9383</p>	DIMENSIONS ARE IN MM [INCH] .X ± 0.13 [.005] .XX ± 0.08 [.003] .XXX ± 0.025 [.001] ANGLE: NO DEC ± 1° .X ± 0.5° .XX ± 0.25°		MATERIAL: SEE NOTES FINISH: <input checked="" type="checkbox"/>		TITLE: RECOMMEND PCB FOOTPRINT	
	DRAWN BY: XL Deng 10/20/2018		CHECKED BY: Jason Wu 10/20/2018		SIZE: DWG NUMBER:	
	ENGR APPR: Gary Hsieh 10/20/2018		MFG APPR:		B+ BDX0100CMMHFAU00	
	QA APPR:		THIRD ANGLE		SCALE: 10:1 SHEET 2 OF 3	

- PROPRIETARY INFORMATION -
NO USE OR REPRODUCTION MAY BE MADE OF
THIS DOCUMENT WITHOUT EXPRESS WRITTEN
PERMISSION OF NEOCONIX.



NOTE(UNLESS OTHERWISH SPECIFIED):

1. COMPONENT LOAD PER TRAY: 120PCS.

5 TRAY/PACKAGE: 600 PCS.

5 PACKAGE/CARTON: 420mm X 390mm X 260mm.

TOTAL: 3000PCS/CARTON.

2. MATERIAL: TRANSPARENT POLYSTYRENE(PS).

<p>4020 Moorpark Ave, #108 San Jose, CA 95117</p> <p>TEL: 408-530-9393 FAX: 408-530-9383</p>	DIMENSIONS ARE IN MM [INCH]		MATERIAL: SEE NOTES		TITLE: PACKAGE SPEC	
	.X ± 0.13 [.005]	✓	FINISH: --		SIZE B+	
	.XX ± 0.08 [.003]		DRAWN BY: XL Deng 10/20/2018	CHECKED BY: Jason Wu 10/20/2018	DWG NUMBER: BDX0100CMMHFAU00	
	.XXX ± 0.025 [.001]		ENGR APPR: Gary Hsieh 10/20/2018	MFG APPR:	REV C	
ANGLE: NO DEC ± 1° .X ± 0.5° .XX ± 0.25°		THIRD ANGLE		SCALE: 2:1 SHEET 3 OF 3		