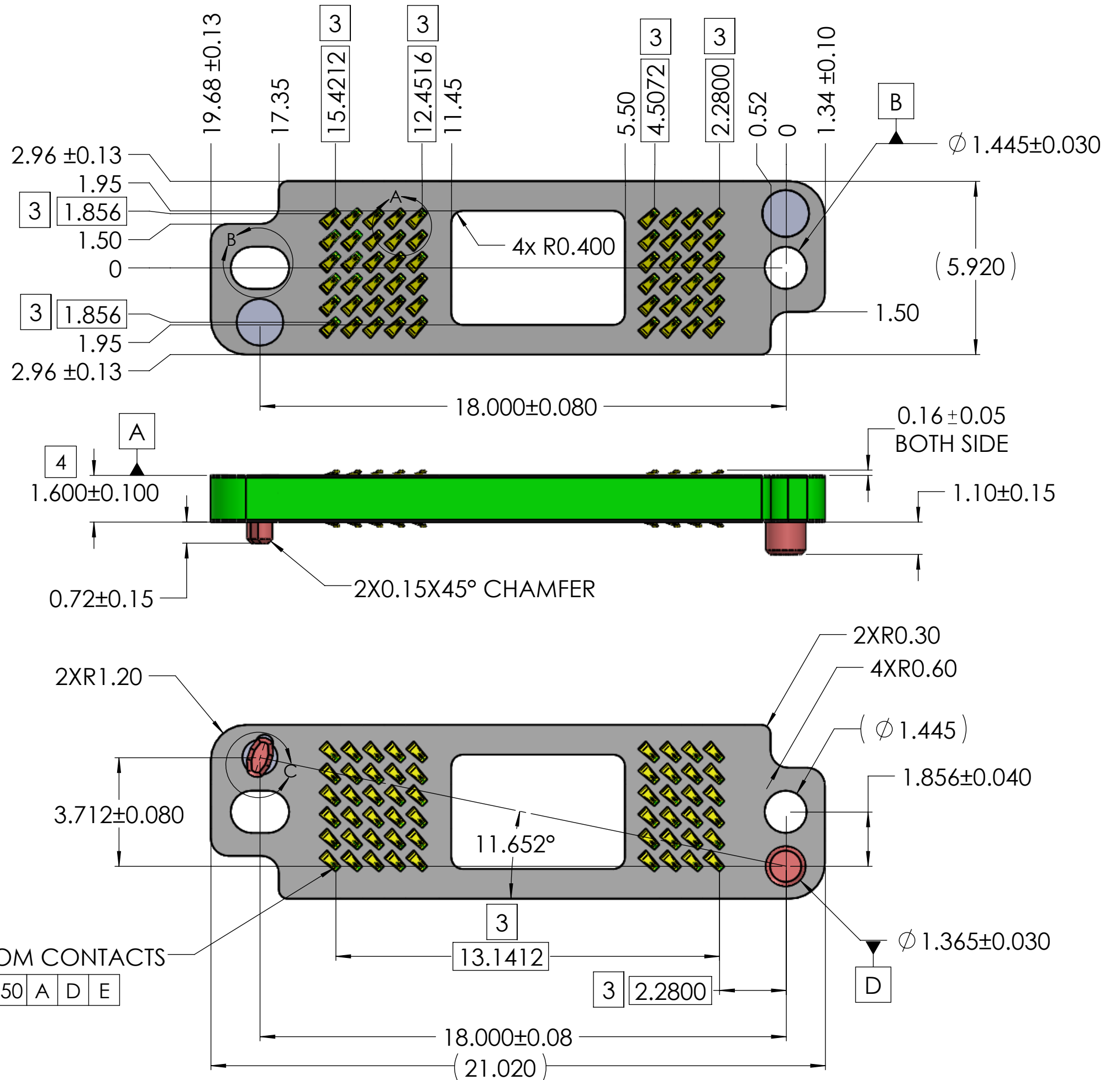
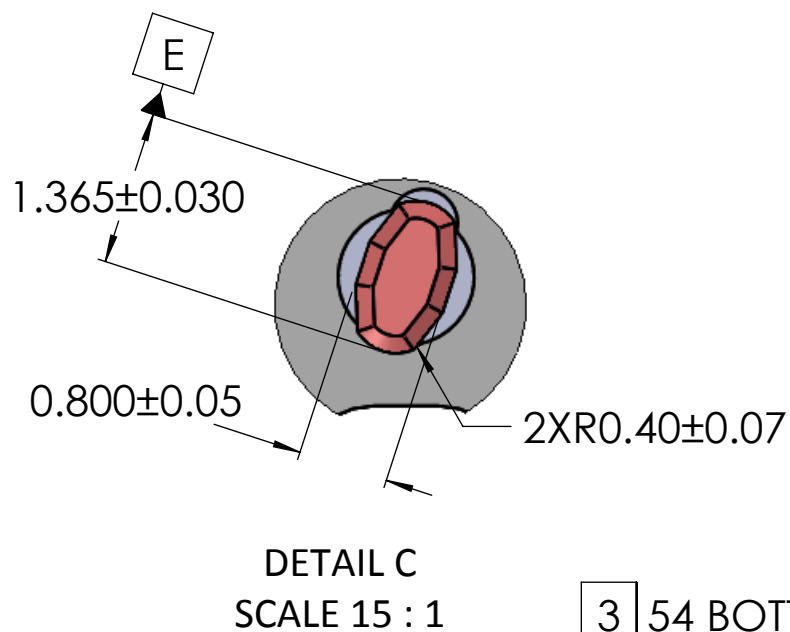
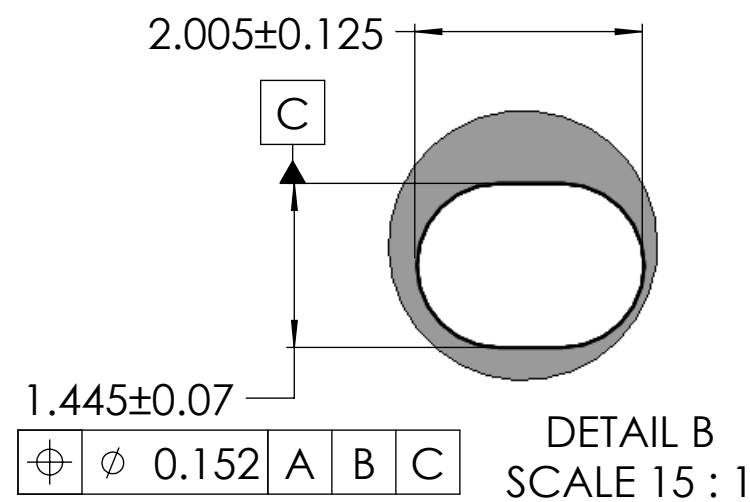
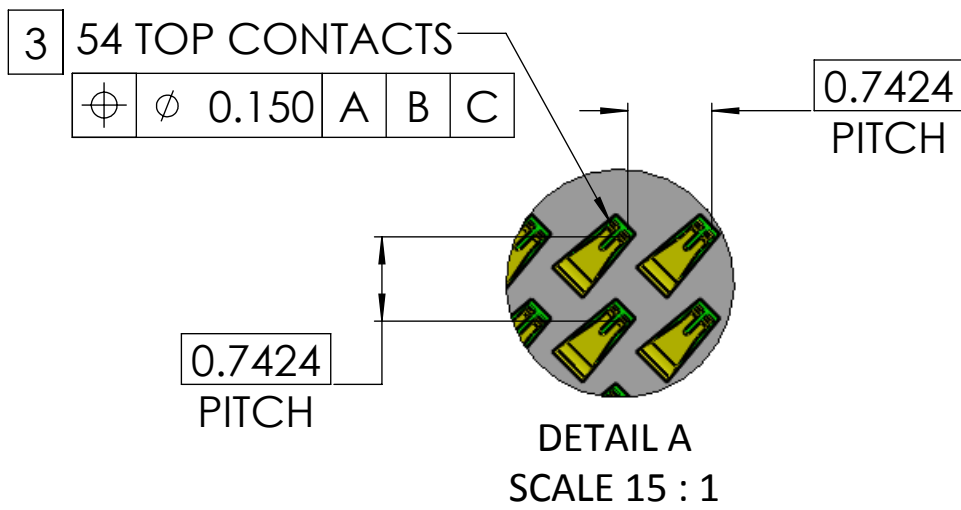


- PROPRIETARY INFORMATION -
NO USE OR REPRODUCTION MAY BE MADE OF
THIS DOCUMENT WITHOUT EXPRESS WRITTEN
PERMISSION OF NEOCONIX.

Revisions			
REV	ECN #	Description	Date
3		Add package SPEC	01/04/2018
4		Change the package SPEC	01/25/2018
5		Modify the guide pin hole diameter	03/05/2018



NOTES:(UNLESS OTHERWISE SPECIFIED)

- 1.INTERPRET DRAWING PER ASME Y14.5-94.
- 2.COMPLIANT WITH RoHS DIRECTIVE 2011/65/EU
- 3 .CENTER MARKS OF CONTACT POSITIONS ARE FOR COMPRESSED
- 4 .HEIGHT AT FULLY COMPRESSED CONTACTS

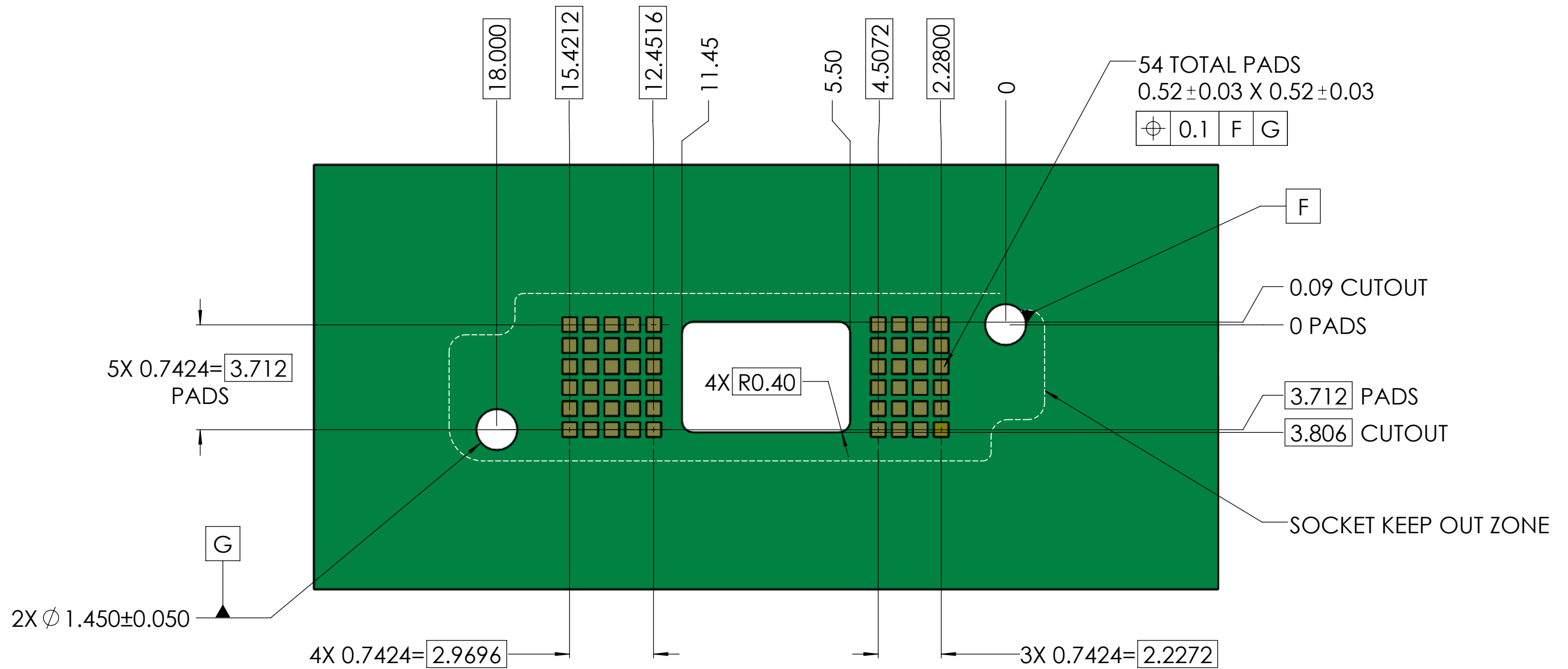
neconix
 715 N. PASTORIA AVE.
 SUNNYVALE, CA 94085
 TEL: 408-530-9393 FAX: 408-530-9372

DIMENSIONS ARE IN
 MM [INCH]
 .X ± 0.13 [.005]
 .XX ± 0.08 [.003]
 .XXX ± 0.025 [.001]
 ANGLE: NO DEC ± 1°
 .X ± 0.5°
 .XX ± 0.25°

MATERIAL:
 FINISH: GOLD
 DRAWN BY: YUANDONG 03/05/2018
 CHECKED BY: YUANZHENG 03/05/2018
 ENGR APPR: Gary Hsieh 03/05/2018
 MFG APPR:
 QA APPR:

TITLE:
 54 POS PCBeam INTERPOSER
 LGA-LGA,0.7424 PITCH
 DWG NUMBER:
 BDX0054CMMF4AU00
 SCALE: 7:1
 SHEET 1 OF 3

- PROPRIETARY INFORMATION -
NO USE OR REPRODUCTION MAY BE MADE OF
THIS DOCUMENT WITHOUT EXPRESS WRITTEN
PERMISSION OF NEOCONIX.

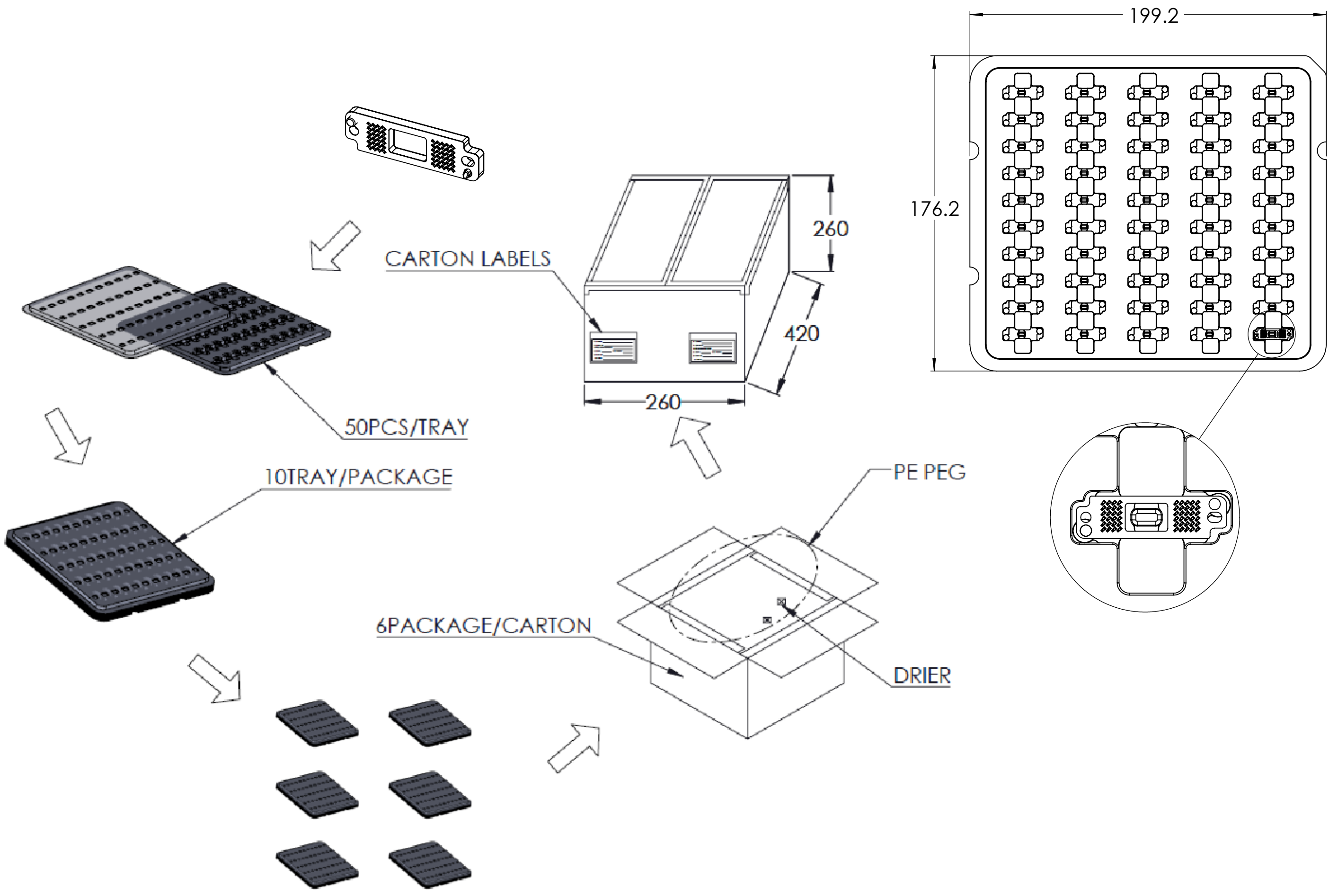


NOTES(UNLESS OTHERWISE SPECIFIED):

- 1.PADS TO BE ELECTROLESS NICKEL/IMMERSION GOLD (ENIG) PLATED
- 2.VIAS IN PAD AREAS MUST BE FILLED
- 3.INTERPOSER OUTLINE; NO COMPONENTS ALLOWED WITHIN THIS AREA
- 4.ALLOWED COMPONENT AREA; MAXIMUM COMPONENT HEIGHT 1.3 mm
- 5.IF SOLDERMASK IS APPLIED IN THE ARRAY AREA. IT SHALL NOT PROTRUDE ABOVE THE PLANE OF THE CONTACT PAD SURFACE

<p>715 N. PASTORIA AVE. SUNNYVALE, CA 94085 TEL: 408-530-9393 FAX: 408-530-9372</p>	<p>DIMENSIONS ARE IN MM [INCH]</p> <p>.X ± 0.13 [.005] .XX ± 0.08 [.003] .XXX ± 0.025 [.001]</p> <p>ANGLE: NO DEC ± 1° .X ± 0.5° .XX ± 0.25°</p> <p>THIRD ANGLE</p>		<p>MATERIAL: FINISH: Gold</p>		<p>TITLE: RECOMMEND PCB FOOTPRINT</p>	
	<p>DRAWN BY: YUANDONG 03/05/2018</p>		<p>CHECKED BY: YUANZHENG 03/05/2018</p>		<p>SIZE: B+</p>	
	<p>ENGR APPR: Gary Hsieh 03/05/2018</p>		<p>MFG APPR:</p>		<p>DWG NUMBER: BDX0054CMMF4AU00</p>	
	<p>QA APPR:</p>		<p>SCALE: 7:1</p>		<p>SHEET 2 OF 3</p>	

- PROPRIETARY INFORMATION -
NO USE OR REPRODUCTION MAY BE MADE OF
THIS DOCUMENT WITHOUT EXPRESS WRITTEN
PERMISSION OF NEOCONIX.



NOTE(UNLESS OTHERWISH SPECIFIED):
1.COMPONENT LOAD PER TRAY : 50PCS
10 TRAY/PACKAGE:500PCS
6PACKAGE/CARTON: 420mm X 260mm X 260mm.
TOTAL: 3000PCS/CARTON
2.MATERIAL:TRANSPARENT POLYSTYRENE(PS).

<p>715 N. PASTORIA AVE. SUNNYVALE, CA 94085 TEL: 408-530-9393 FAX: 408-530-9372</p>	DIMENSIONS ARE IN MM [INCH] .X ± 0.13 [.005] .XX ± 0.08 [.003] .XXX ± 0.025 [.001] ANGLE: NO DEC ± 1° .X ± 0.5° .XX ± 0.25°		MATERIAL: FINISH: Gold		TITLE: RECOMMEND PCB FOOTPRINT	
	DRAWN BY: YUANDONG ENGR APPR: Gary Hsieh	03/05/2018 03/05/2018	SIZE B+	DWG NUMBER: BDX0054CMMF4AU00	REV 5	SCALE: 7:1 SHEET 3 OF 3
	MFG APPR: QA APPR:	03/05/2018				
	THIRD ANGLE					