

## PCBeam™ LPS Product Family Overview

### High Density, Low Profile, Solderable Connectors

#### OVERVIEW

The LPS products are solderable versions of those in the Neoconix LPM product family. Also developed for mobile devices and other space-constrained applications, the LPS products feature the same high density, but in a configuration that allows automated pick & place and SMT assembly onto the FPC. Like the LPM family, these products can uniquely combine high speed signaling (>10Gbps) and significant power delivery (>10A) within one connector. Optionally, Neoconix can also provide the corresponding flex circuit, with the connectors already pre-attached.

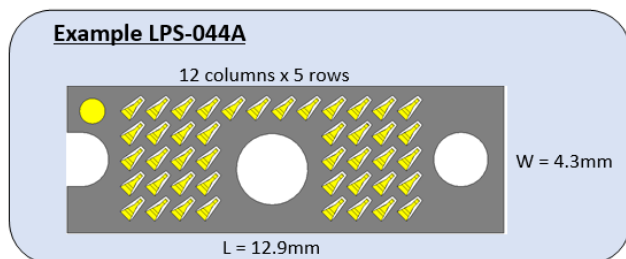
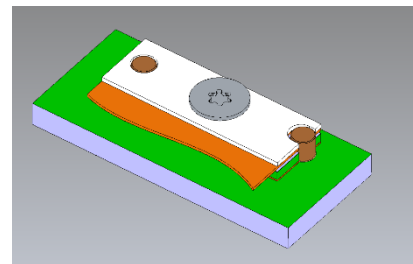
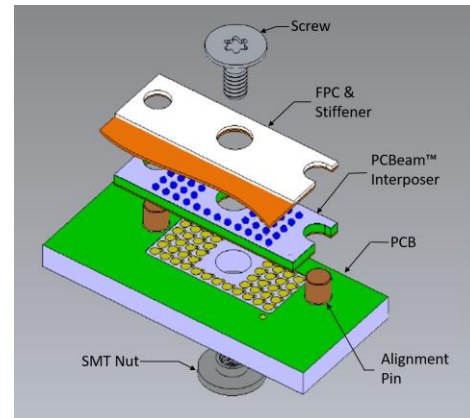
#### FEATURES

- High performance PCBeam™ connector technology
- Low profile, <1.0mm connector thickness
- High density 0.7424mm contact pitch
- High current to >10A on some configurations
- High speed to >10Gbps
- Meets PCIe3.0 & USB3.1 signal integrity requirements
- Pick & place compatible (interposers, pins, nut)
- Additional customization options offered
- Compliant with ROHS 2011/65/EU and IPC-4101B (halogen-free)

#### STANDARD PRODUCT FAMILY

Part Number <sup>1</sup>	Row	Columns	Pins	Length (mm)	Width (mm)
LPS-024A	4	10	24	11.4	3.6
LPS-044A	5	12	44	12.9	4.4
LPS-056A	6	12	56	12.9	5.1
LPS-080A	6	16	80	15.9	5.1

1. Additional Customization Available Upon Request



#### FOR MORE INFORMATION

Neoconix, Inc., 4020 Moorpark Ave, #108., San Jose, CA 95117. Web: [www.neoconix.com](http://www.neoconix.com) E: [sales@neoconix.com](mailto:sales@neoconix.com) P: 408.530.9393