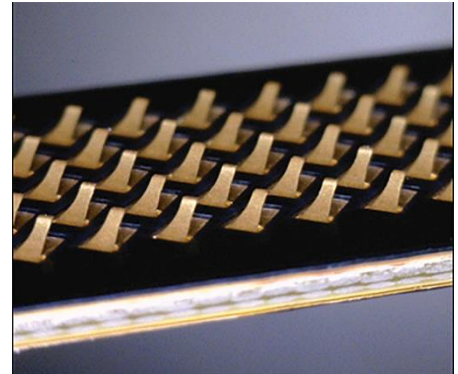


PCBeam™ SPH1 Product Family Overview

High Density, Low Performance Connectors

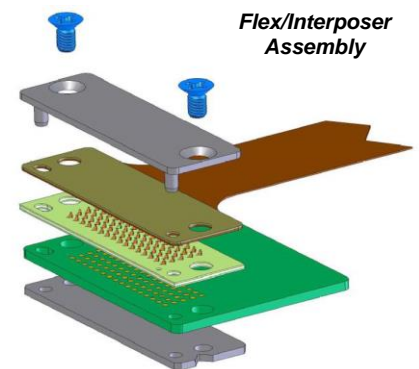
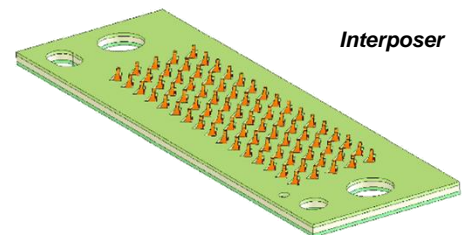
OVERVIEW

Neoconix's SPH1 family of 5-row PCBeam™ interposer standard products has been developed for high performance board-to-board and flex-to-board applications. There are five standard configurations available, ranging from 80-positions to 120-positions and from 1.27mm pitch to 0.8mm pitch. Compatible hardware is also available for simple assembly into the host system. Neoconix can also provide complete turnkey assemblies that include a high performance FPC.



FEATURES

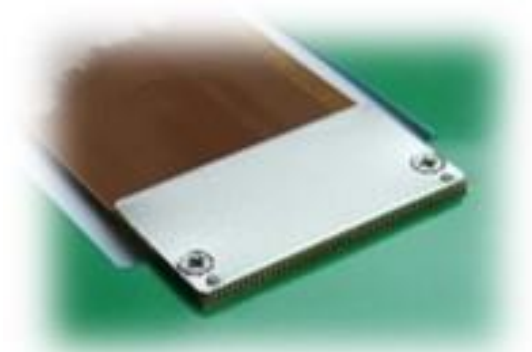
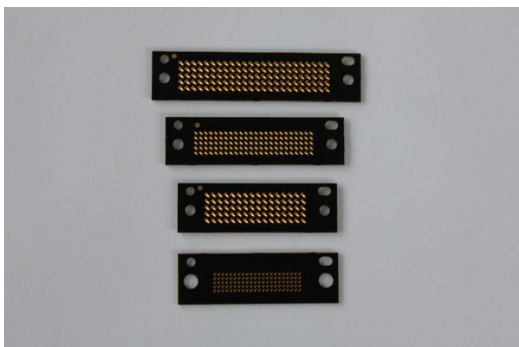
- High performance PCBeam™ connector technology
- Product options at 1.27mm, 1.00mm & 0.8mm pitch
- Current capacity to 2A per position
- Thickness options from 0.5mm to 3mm
- High speed to >10Gbps
- Standard assembly hardware included (optional)
- Additional customization options offered
- Option to purchase interposer only, interposer + hardware, or full assembly (including FPC)
- Compliant with ROHS 2011/65/EU and IPC-4101B (halogen-free)



STANDARD PRODUCT FAMILY¹

Item	Interposer Part Number	Pitch (mm)	Positions	Mated Height (mm)	Rows	Cols	Length (mm)	Width (mm)
1	SPH1-F080A	1.27	80	0.8	5	16	31.8	9.9
2	SPH1-F120A	1.27	120	0.8	5	24	41.9	9.9
3	SPH1-D120A	1.00	120	0.8	5	24	35.7	9.6
4	SPH1-D120B	1.00	120	3.0	5	24	35.7	9.6
5	SPH1-C110A	0.80	110	0.5	5	22	31.8	10.0

1. Additional Customization Available Upon Request



FOR MORE INFORMATION

Neoconix, Inc., 4020 Moorpark Ave, #108., San Jose, CA 95117. Web: www.neoconix.com E: sales@neoconix.com P: 408.530.9393