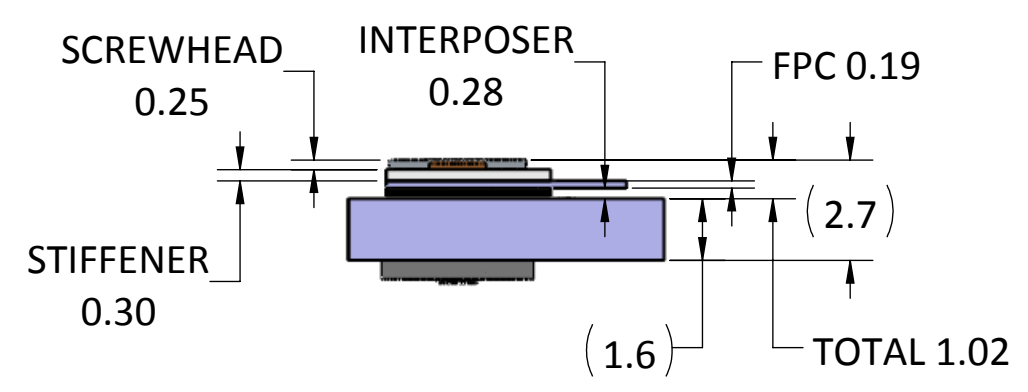
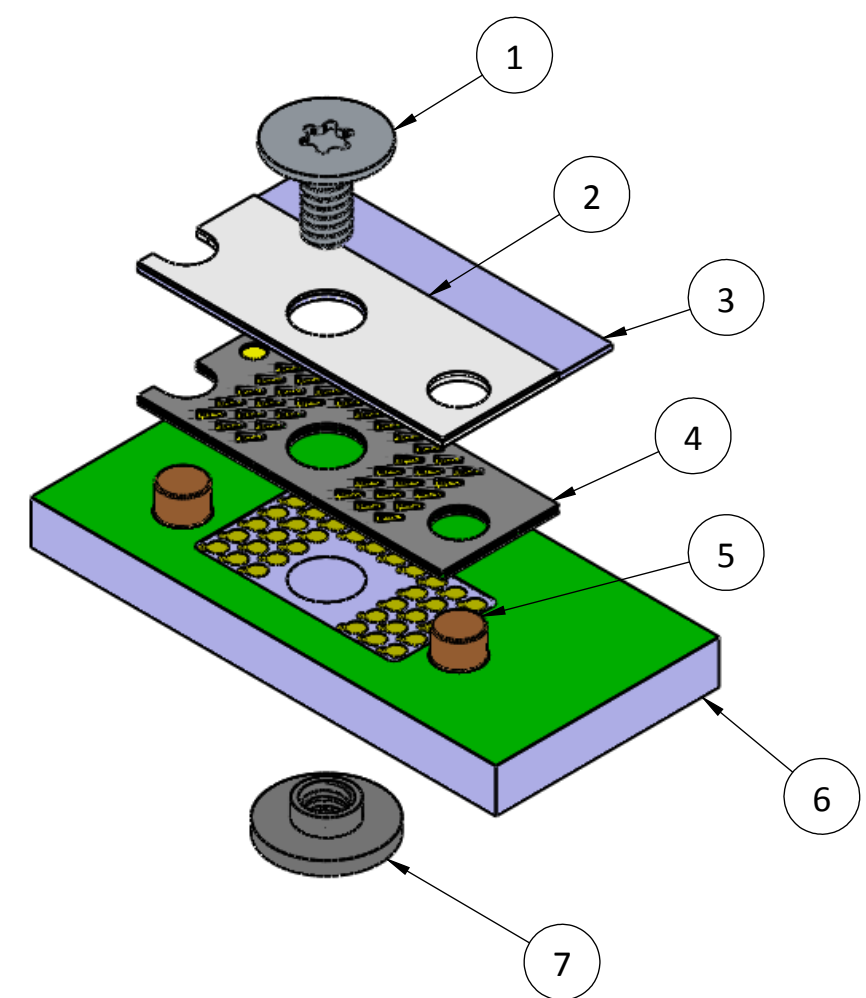
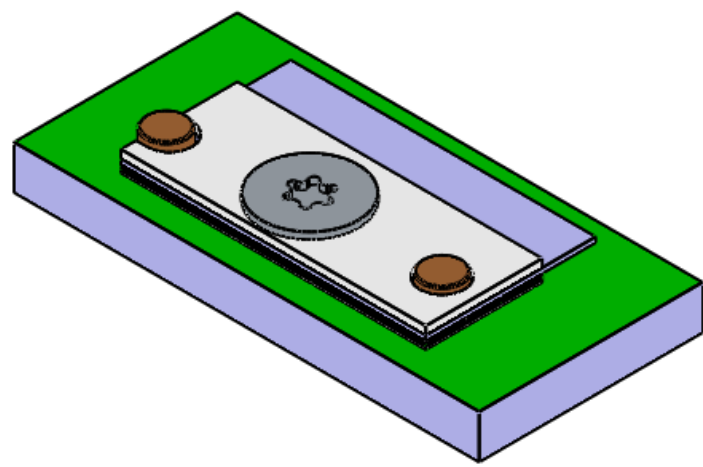
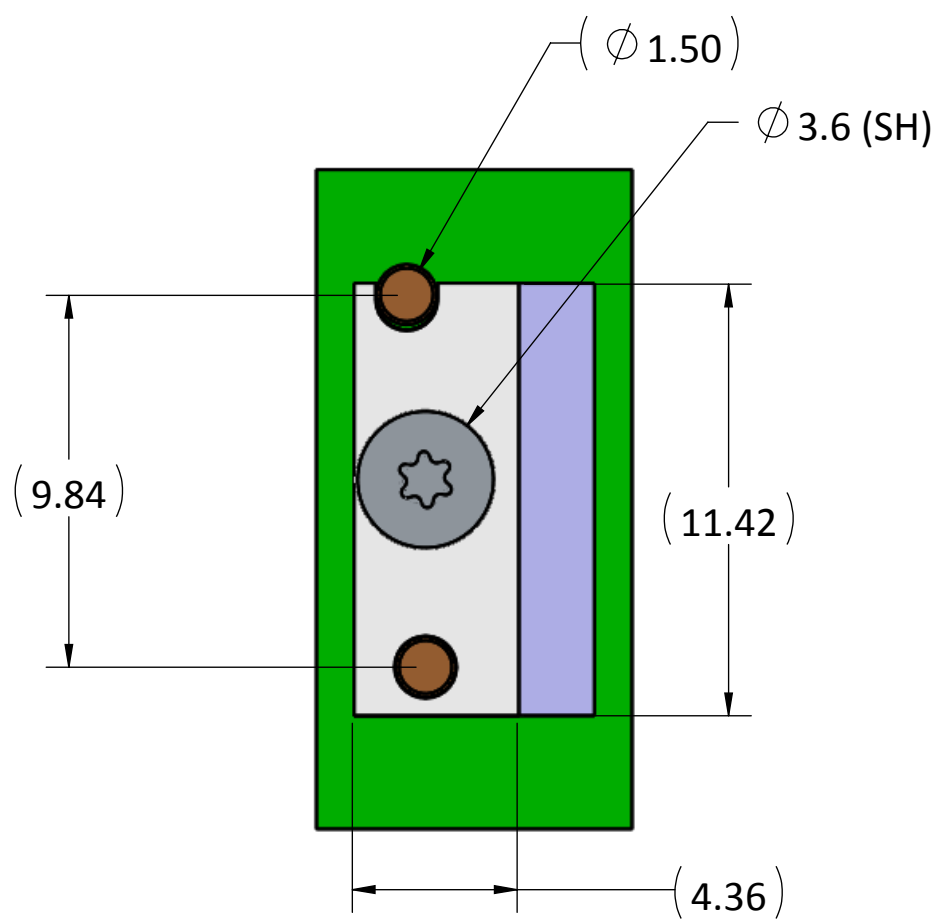


- PROPRIETARY INFORMATION -
NO USE OR REPRODUCTION MAY BE MADE OF
THIS DOCUMENT WITHOUT EXPRESS WRITTEN
PERMISSION OF NEOCONIX.

| ITEM NO. | DESCRIPTION | Default/QTY |
|----------|------------------------|-------------|
| 1 | SCREW, WAFERHEAD, M1.4 | 1 |
| 2 | STIFFENER | 1 |
| 3 | FLEX | 1 |
| 4 | INTERPOSER | 1 |
| 5 | ALIGNMENT PIN | 2 |
| 6 | PCB | 1 |
| 7 | NUT, CUSTOM SMT, M1.4 | 1 |



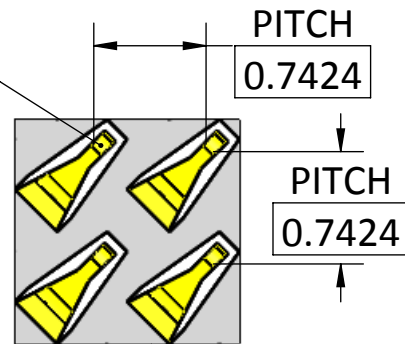
| | | | | | | |
|---|--|--------------------|------------|--|--------------|-----|
| <p>2355-C PARAGON DRIVE. SAN JOSE, CA 95131 TEL: 408-530-9393 FAX: 408-530-9383</p> | <p>DIMENSIONS ARE IN MM [INCH]</p> <p>.X ± .XX ± .XXX ±</p> <p>ANGLE: NO DEC ± .X ± .XX ±</p> <p>THIRD ANGLE</p> | MATERIAL: | | TITLE: | | |
| | | FINISH: | | INTERPOSER, SCREW-DOWN 34 POSITIONS LGA-LGA | | |
| | | DRAWN BY: JASON WU | 03-19-2015 | SIZE | DWG NUMBER: | REV |
| | | CHECKED BY: | | B+ | LPM-034A-ASY | 1 |
| ENGR APPR: | | SCALE: 5:1 | | SHEET 1 OF 8 | | |
| MFG APPR: | | | | | | |
| QA APPR: | | | | | | |

- PROPRIETARY INFORMATION -
NO USE OR REPRODUCTION MAY BE MADE OF
THIS DOCUMENT WITHOUT EXPRESS WRITTEN
PERMISSION OF NEOCONIX.

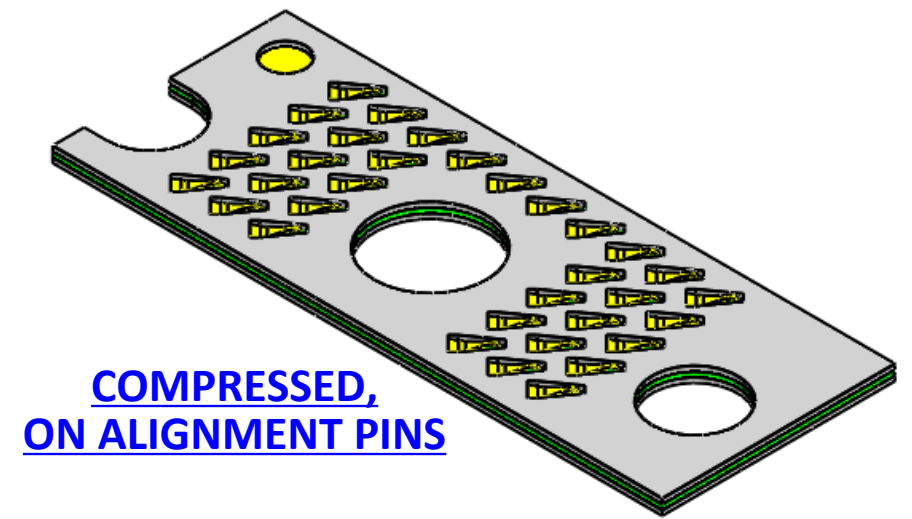
| REVISIONS | | | | |
|-----------|------|-----------------|------------|----------|
| REV | ECO | DESCRIPTION | DATE | DRAWN BY |
| 1 | 0000 | INITIAL RELEASE | 03-19-2015 | Jason |

4 34 POSITIONS TOP
34 POSITIONS BOTTOM

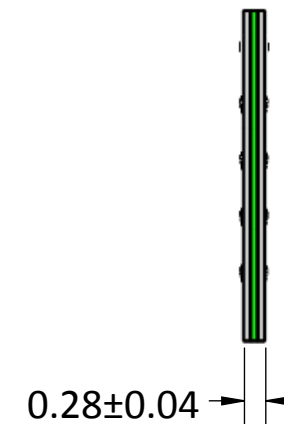
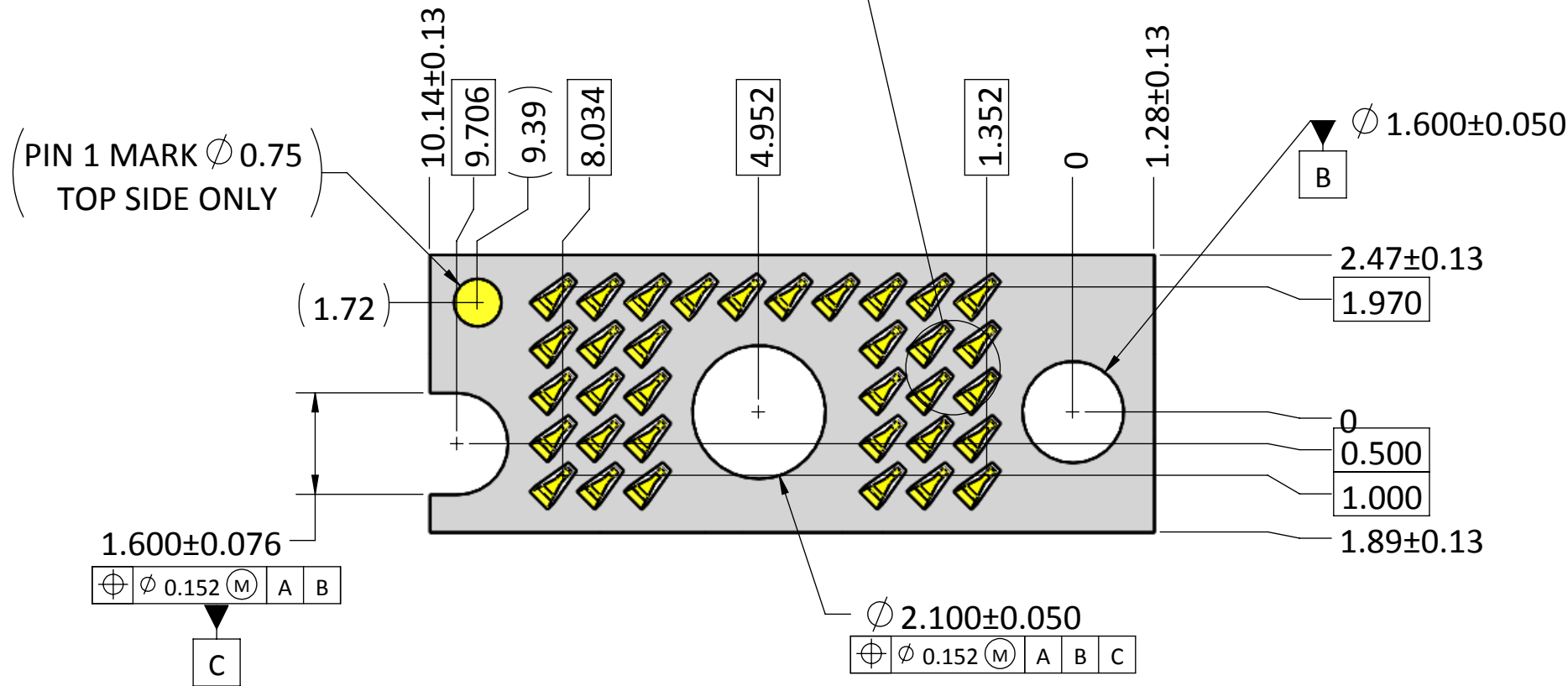
⊕ ∅ 0.203 A B C



DETAIL B
SCALE 20 : 1



**COMPRESSED,
ON ALIGNMENT PINS**



COMPRESSED

UNCOMPRESSED

NOTES (UNLESS OTHERWISE SPECIFIED):

1. INTERPRET DRAWING PER ASME Y14.5-94.
2. HALOGEN-FREE PER IPC-4101B.
3. COMPLIANT WITH RoHS DIRECTIVE 2011/65/EU.
4. CENTER MARKS OF CONTACT POSITIONS ARE FOR COMPRESSED STATE.

neconix
2355-C PARAGON DRIVE.
SAN JOSE, CA 95131
TEL: 408-530-9393 FAX: 408-530-9383

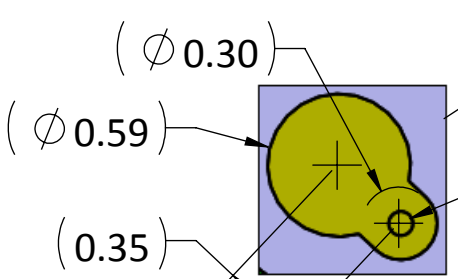
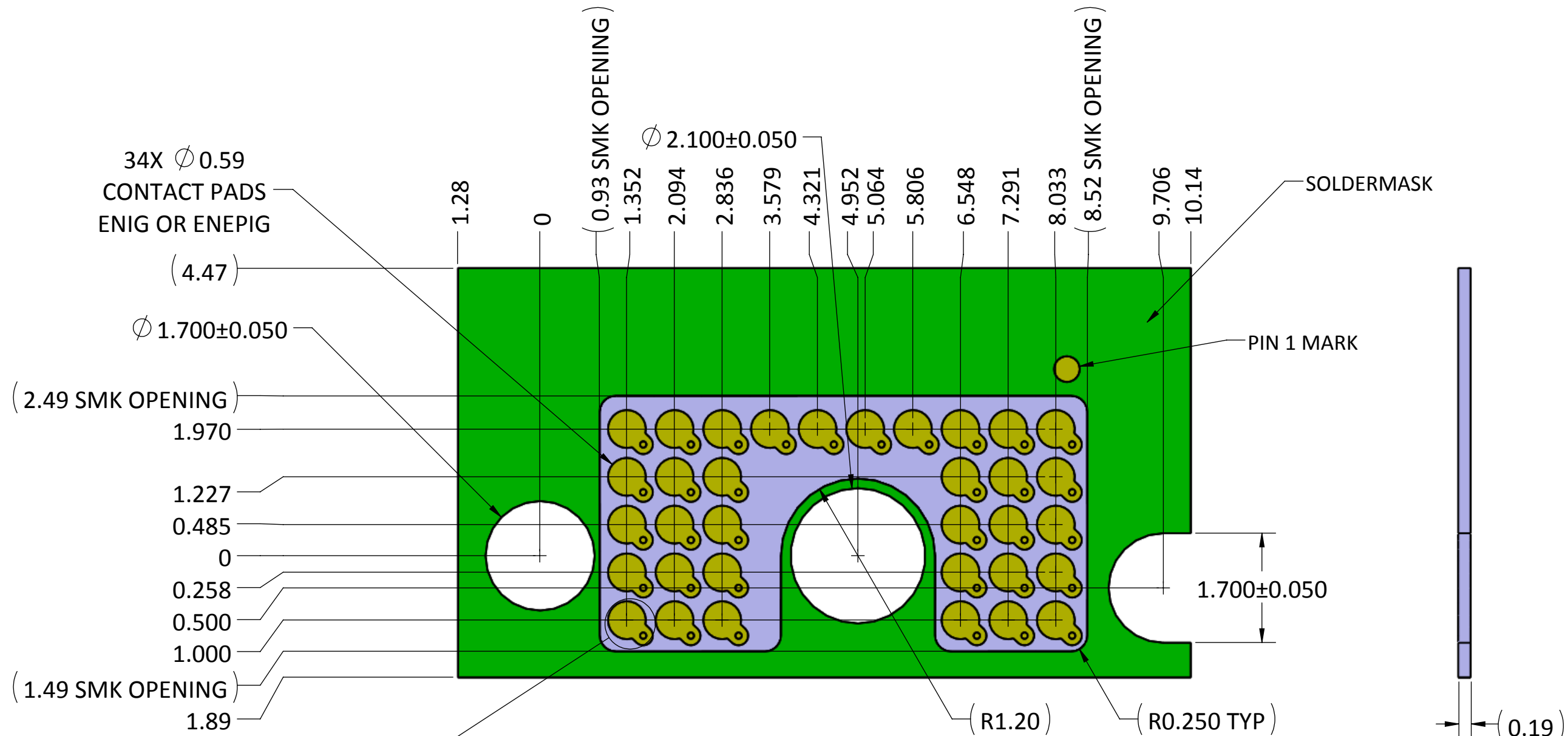
DIMENSIONS ARE IN
MM [INCH]
.X ± 0.13 [.005]
.XX ± 0.08 [.003]
.XXX ± 0.025 [.001]
ANGLE: NO DEC ± 1°
.X ± 0.5°
.XX ± 0.25°

MATERIAL: SEE NOTES
FINISH: SEE NOTES
DRAWN BY: Jason Wu 03-19-2015
CHECKED BY: Woody Maynard 03-19-2015
ENGR APPR:
MFG APPR:
QA APPR:

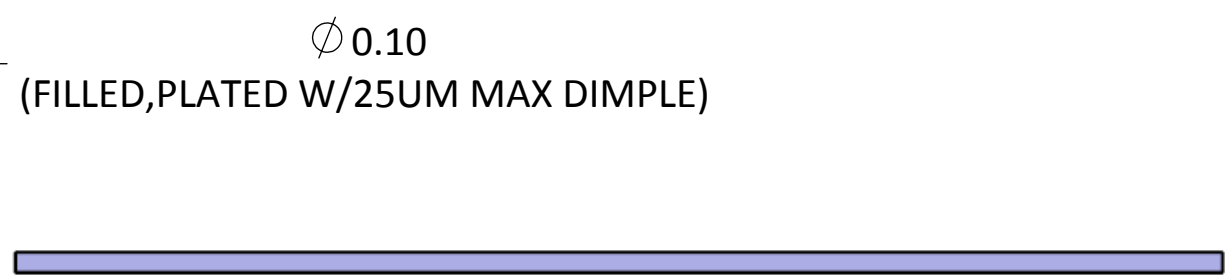
TITLE:
**INTERPOSER, SCREW-DOWN
34 POSITIONS LGA-LGA**
SIZE: B+
DWG NUMBER: LPM-034A
REV: 1
SCALE: 10:1 SHEET 2 OF 8

- PROPRIETARY INFORMATION -
NO USE OR REPRODUCTION MAY BE MADE OF
THIS DOCUMENT WITHOUT EXPRESS WRITTEN
PERMISSION OF NEOCONIX.

| REVISIONS | | | | |
|-----------|------|-----------------|------------|----------|
| REV | ECN | DESCRIPTION | DATE | APPROVED |
| 1 | 0000 | INITIAL RELEASE | 03-19-2015 | JASON |



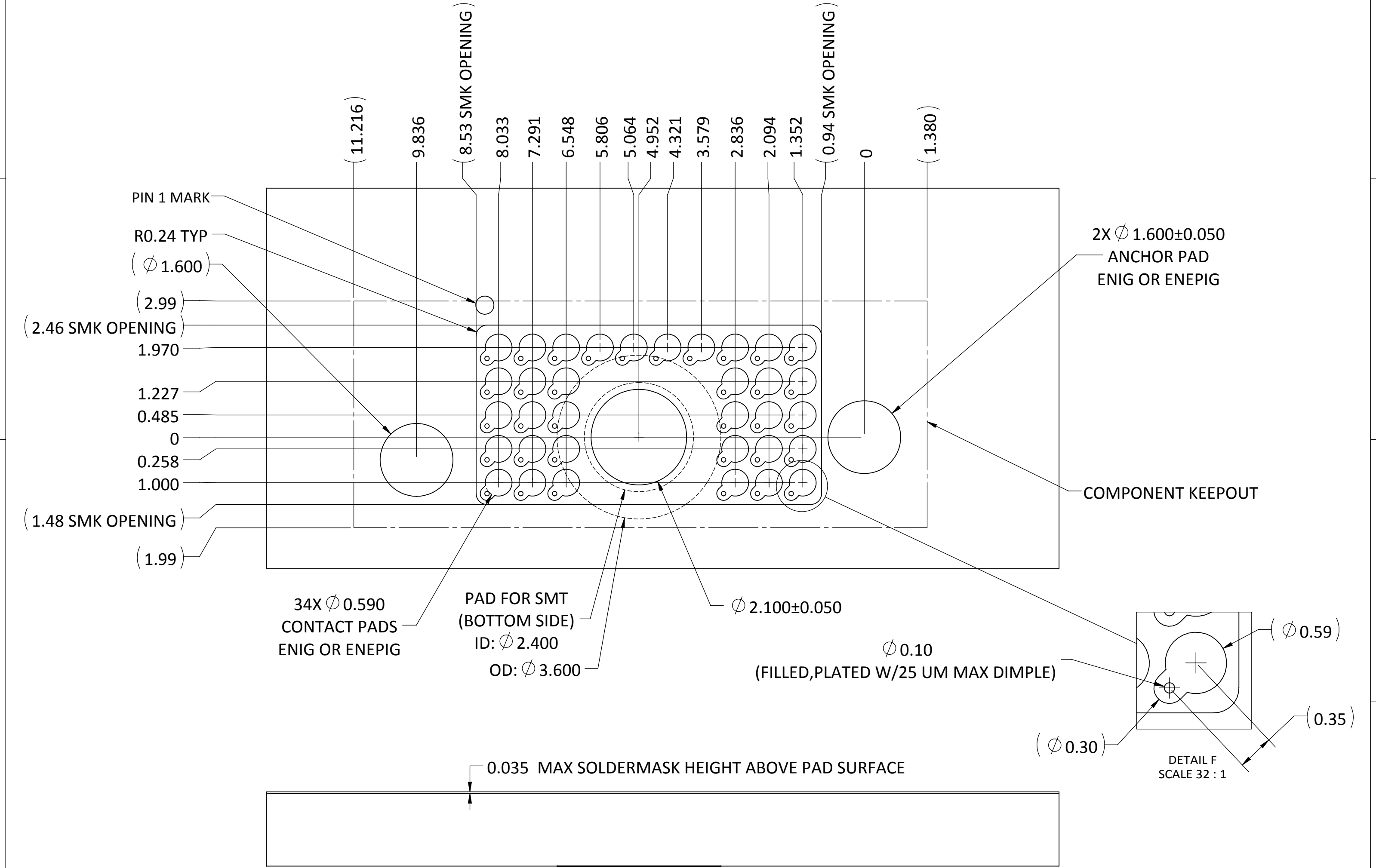
DETAIL H
SCALE 32 : 1



| | | | | | | |
|---|--|--|-----------------------------------|---------------------|--|--|
| <p>2355-C PARAGON DRIVE. SAN JOSE, CA 95131 TEL: 408-530-9393 FAX: 408-530-9383</p> | <p>DIMENSIONS ARE IN MM [INCH]</p> <p>.X ± 0.13 [.005] .XX ± 0.08 [.003] .XXX ± 0.025 [.001]</p> <p>ANGLE: NO DEC ± 1° .X ± 0.5° .XX ± 0.25°</p> | | <p>MATERIAL:</p> <p>FINISH: ✓</p> | | <p>TITLE: RECOMMENDED FPC LAYOUT 34 POSITIONS LGA-LGA</p> | |
| | <p>DRAWN BY: JASON WU 03-19-2015</p> <p>CHECKED BY:</p> <p>ENGR APPR:</p> <p>MFG APPR:</p> <p>QA APPR:</p> | | <p>SIZE: B+</p> | | <p>DWG NUMBER: LPM-034A-FPC</p> | |
| <p>SCALE: 10:1</p> | | | | <p>SHEET 3 OF 8</p> | | |

- PROPRIETARY INFORMATION -
NO USE OR REPRODUCTION MAY BE MADE OF
THIS DOCUMENT WITHOUT EXPRESS WRITTEN
PERMISSION OF NEOCONIX.

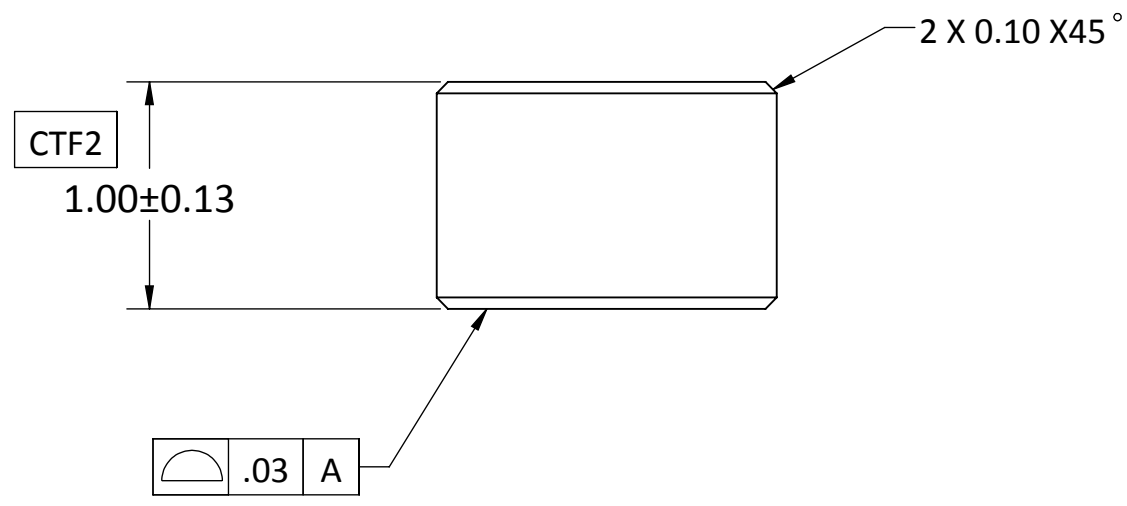
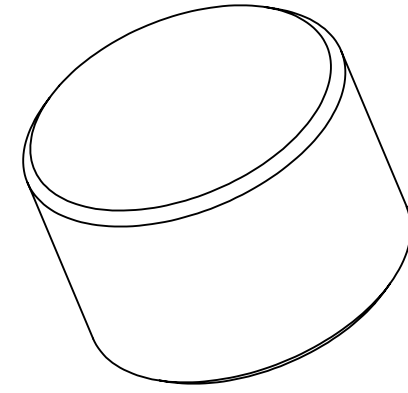
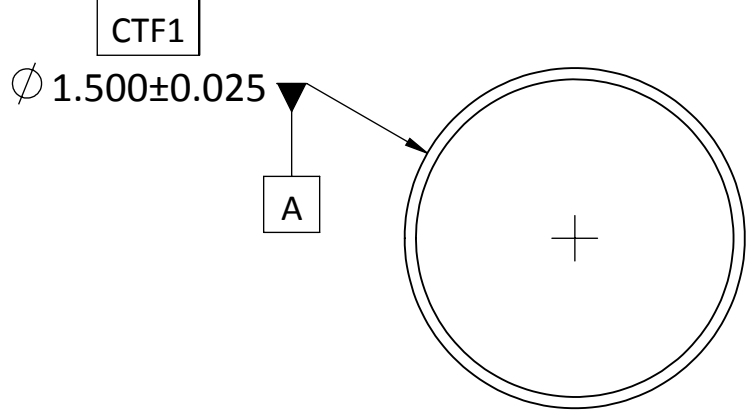
| REVISIONS | | | | |
|-----------|------|-----------------|------------|----------|
| REV | ECN | DESCRIPTION | DATE | APPROVED |
| 1 | 0000 | INITIAL RELEASE | 03-19-2015 | JASON |



| | | | | | | |
|---|--|--|----------------------|--|---|--|
| <p>2355-C PARAGON DRIVE. SAN JOSE, CA 95131 TEL: 408-530-9393 FAX: 408-530-9383</p> | DIMENSIONS ARE IN MM [INCH] .X ± 0.13 [.005] .XX ± 0.08 [.003] .XXX ± 0.025 [.001] ANGLE: NO DEC ± 1° .X ± 0.5° .XX ± 0.25° | | MATERIAL: FINISH: | | TITLE: RECOMMENDED PCB LAYOUT 34 POSITIONS | |
| | CHECKED BY: JASON WU 03-19-2015 | | ENGR APPR: | | SIZE: B+ | |
| | MFG APPR: | | QA APPR: | | DWG NUMBER: LPM-034A-PCB | |
| | THIRD ANGLE | | SCALE: 10:1 | | SHEET 4 OF 8 | |

- PROPRIETARY INFORMATION -
NO USE OR REPRODUCTION MAY BE MADE OF
THIS DOCUMENT WITHOUT EXPRESS WRITTEN
PERMISSION OF NEOCONIX.

| REVISIONS | | | |
|-----------|---|----------|------------|
| REV. | DESCRIPTION | DATE | DESIGN BY: |
| 1 | INITIAL | 09/09/13 | TAN |
| 2 | REVISE THE PIN LENGHT FROM 0.75 TO 1.0 mm | 10/01/13 | TAN |
| 3 | ADD CTF TO THE DIAMETER | 10/28/13 | TAN |
| 4 | ECN 1120 - ADD CTF TO LENGHT | 01/23/14 | TAN |



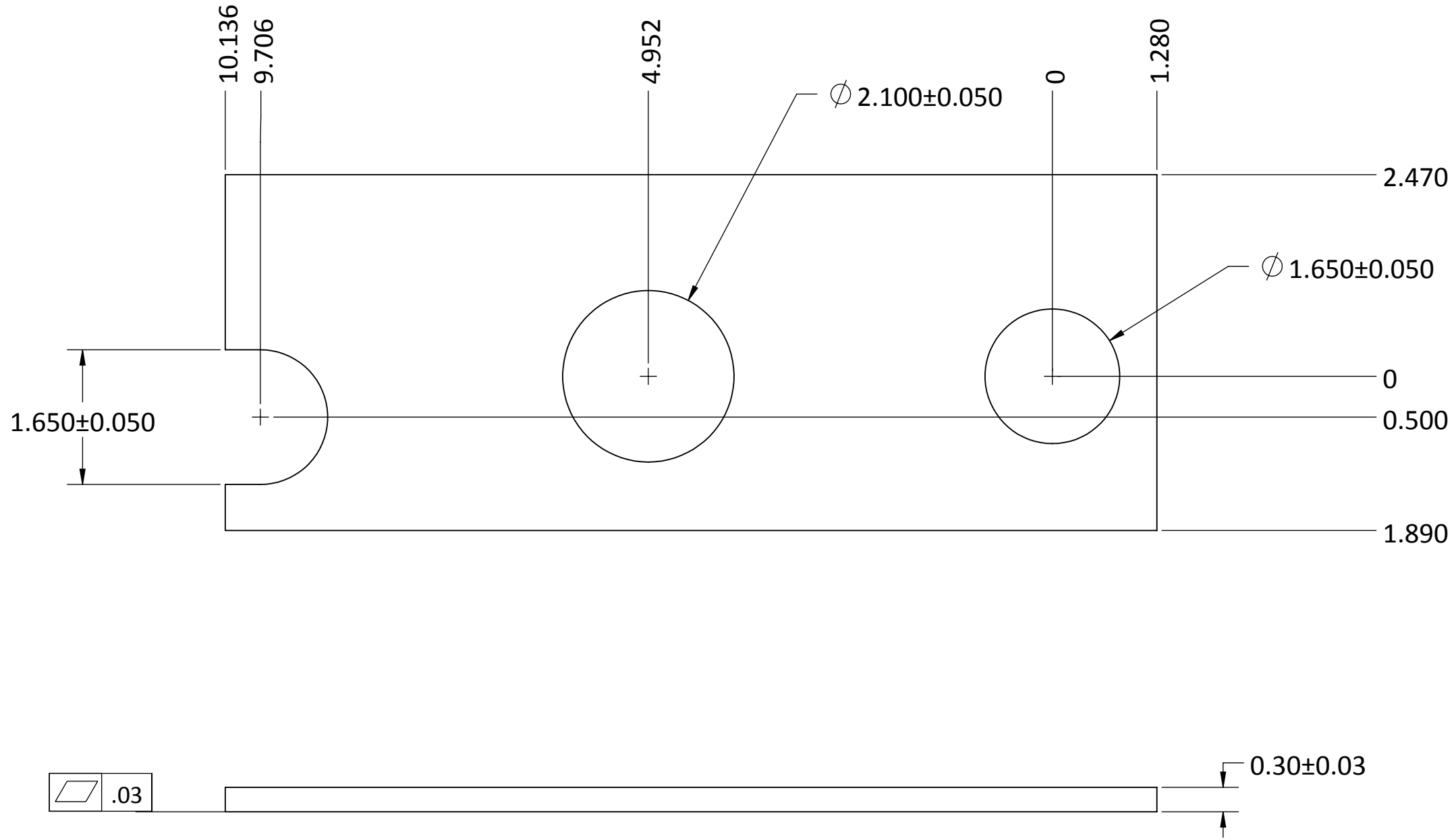
NOTES:(UNLESS OTHERWISE SPECIFIED)

- MATERIAL: C54400 - PHOSPHOR BRONZE.
- PLATE:SULFAMATE NICKEL, 3.5 +/-2.0 um PER ASTM B689-97(2008),
+ BRIGHT TIN, 5.0+/-2.0 um PER ASTM B545-97(2009).

| | | | |
|---|---|---|--|
| <p>715 N. PASTORIA AVE. SUNNYVALE, CA 94085 TEL: 408-530-9393 FAX: 408-530-9372</p> | <p>DIMENSIONS ARE IN MM [INCH]</p> <p>.X ± 0.20 [.008] .XX ± 0.10 [.004] .XXX ± 0.025 [.001]</p> <p>ANGLE: NO DEC ± 1° .X ± 0.5° .XX ± 0.25°</p> <p>THIRD ANGLE</p> | <p>MATERIAL: SEE NOTES</p> <p>FINISH: SEE NOTES</p> <p>DRAWN BY: TAN NGUYEN 09/09/2013</p> <p>CHECKED BY: W MAYNARD 09/09/2013</p> <p>ENGR APPR:</p> <p>MFG APPR:</p> <p>QA APPR:</p> | <p>TITLE: ALIGNMENT PIN (ϕ 1.50 X 1.0 mm LONG)</p> <p>SIZE: B+</p> <p>DWG NUMBER: B01-000589</p> <p>REV: 4</p> <p>SCALE: 12:1 SHEET 5 OF 8</p> |
|---|---|---|--|

- PROPRIETARY INFORMATION -
NO USE OR REPRODUCTION MAY BE MADE OF
THIS DOCUMENT WITHOUT EXPRESS WRITTEN
PERMISSION OF NEOCONIX.

| REVISIONS | | | | |
|-----------|------|-----------------|------------|----------|
| REV | ECO | DESCRIPTION | DATE | APPROVED |
| 0 | 0000 | INITIAL RELEASE | 03-19-2015 | JASON |



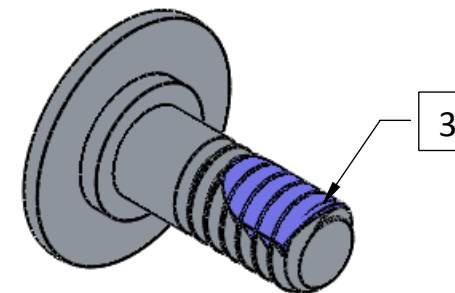
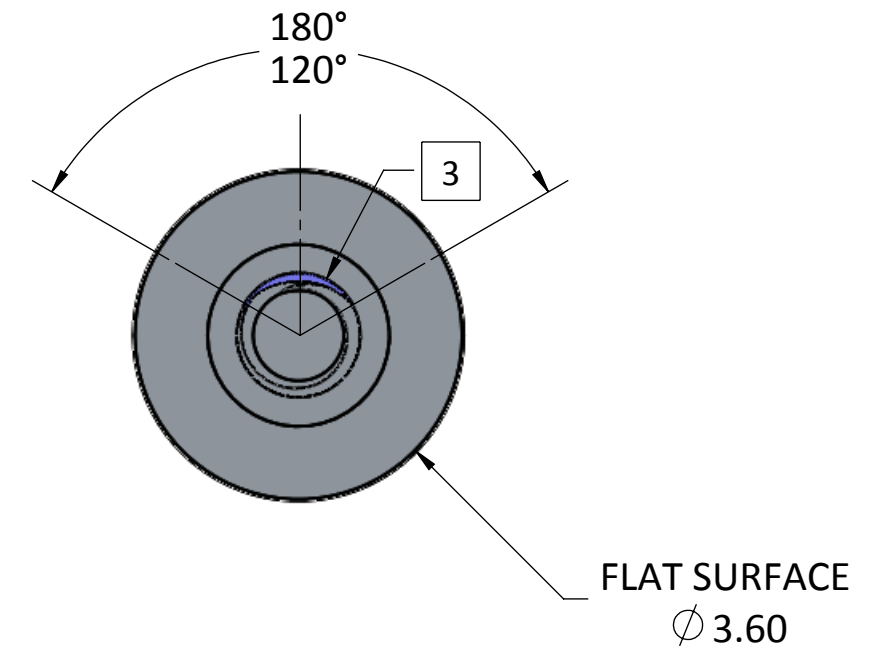
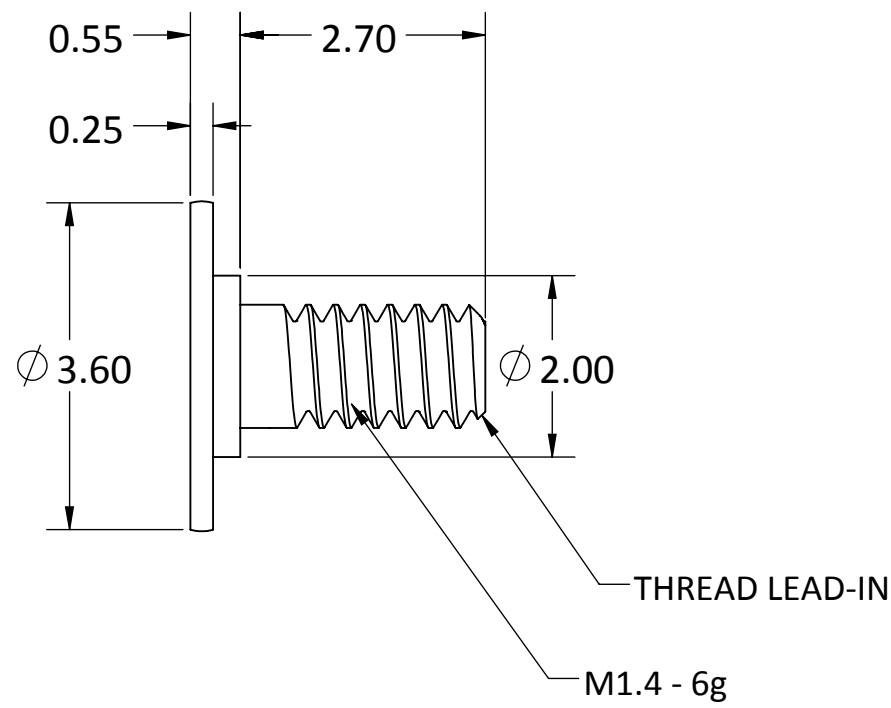
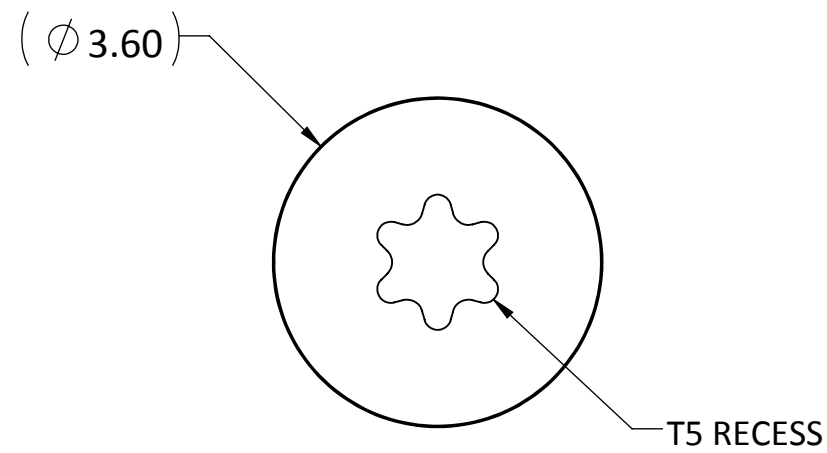
NOTES (UNLESS OTHERWISE SPECIFIED):

1. INTERPRET DRAWING PER ASME Y14.5-94.

| | | | | | |
|---|---|---|---|--------------------------------------|-------------------------|
| <p>2355-C PARAGON DRIVE. SAN JOSE, CA 95131 TEL: 408-530-9393 FAX: 408-530-9383</p> | <p>DIMENSIONS ARE IN MM [INCH]</p> <p>.X \pm 0.13 [.005] .XX \pm 0.08 [.003] .XXX \pm 0.025 [.001]</p> <p>ANGLE: NO DEC \pm 1° .X \pm 0.5° .XX \pm 0.25°</p> <p>THIRD ANGLE</p> | <p>MATERIAL: 301 SS FULL HARD</p> <p>FINISH: SEE NOTES</p> <p>DRAWN BY: JASON WU 03-19-2015</p> <p>CHECKED BY:</p> <p>ENGR APPR:</p> <p>MFG APPR:</p> <p>QA APPR:</p> | <p>TITLE: STIFFENER, MB 34 POS</p> <p>DWG NUMBER: LPM-034A-STF</p> <p>SCALE: 10:1</p> | <p>REV 1</p> <p>SHEET 6 OF 8</p> | |
| | <p>SIZE: B+</p> | <p>DATE: 03-19-2015</p> | <p>APPROVED: JASON</p> | <p>DATE: 03-19-2015</p> | <p>REV: 1</p> |
| | <p>APPROVED: JASON</p> | <p>DATE: 03-19-2015</p> | <p>DATE: 03-19-2015</p> | <p>DATE: 03-19-2015</p> | <p>DATE: 03-19-2015</p> |
| | <p>DATE: 03-19-2015</p> | <p>DATE: 03-19-2015</p> | <p>DATE: 03-19-2015</p> | <p>DATE: 03-19-2015</p> | <p>DATE: 03-19-2015</p> |

- PROPRIETARY INFORMATION -
NO USE OR REPRODUCTION MAY BE MADE OF
THIS DOCUMENT WITHOUT EXPRESS WRITTEN
PERMISSION OF NEOCONIX.

| REVISIONS | | | | |
|-----------|------|----------------------------|------------|----------|
| ZONE | REV. | DESCRIPTION | DATE | APPROVED |
| | 1 | INITIAL PRODUCTION RELEASE | 08-12-2014 | TAN |



NOTES:

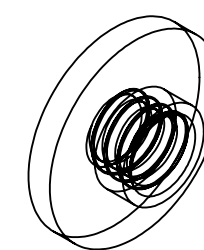
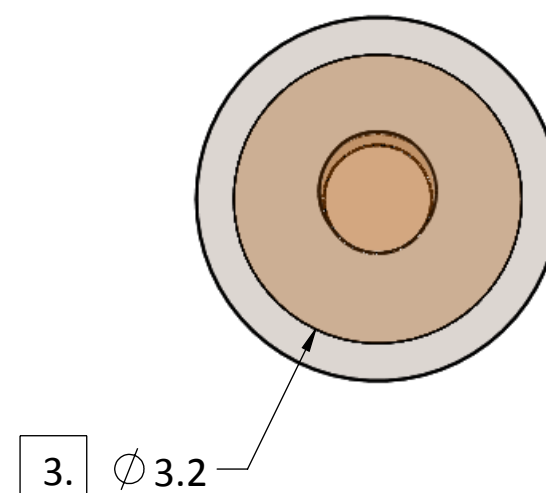
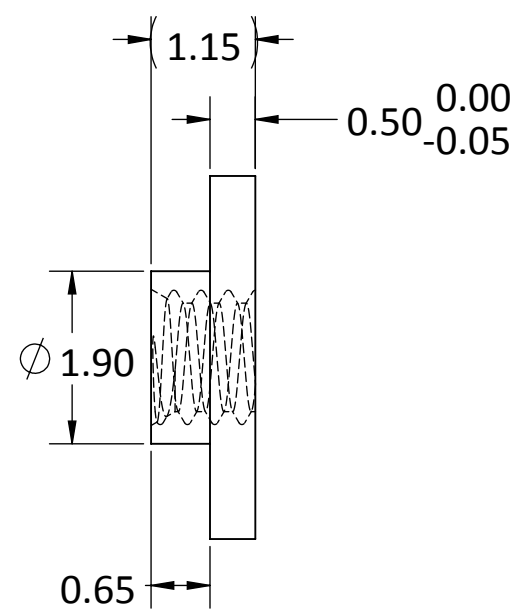
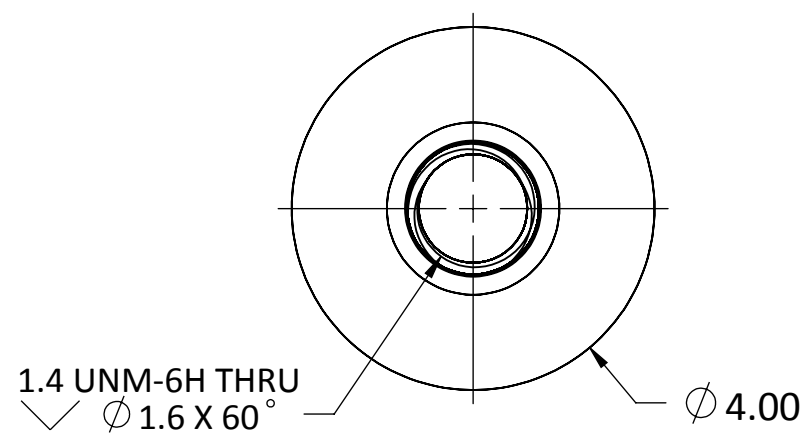
1. MATERIAL: AISI 1018
2. FINISH: BRIGHT NICKEL PER ASTM B689-97, TYPE 2, CLASS 5
3. THREADLOCK: NYLOK-BLUE, FIRST 4-6 WHOLE THREADS, 120°-180° COVERAGE.
4. SCREW FIT TOLERANCE DOES NOT INCLUDE THREADLOCK.
5. PART TO BE FREE OF BURRS AND SHARP EDGES.

PART NUMBER: B01-000614

| | | | | | | |
|---|--|--|---|--|--|--|
| <p>2355-C PARAGON DRIVE. SAN JOSE, CA 95131 TEL: 408-530-9393 FAX: 408-530-9383</p> | DIMENSIONS ARE IN MM [INCH] .X ± 0.13 [.005] .XX ± 0.08 [.003] .XXX ± 0.025 [.001] ANGLE: NO DEC ± 1° .X ± 0.5° .XX ± 0.25° | | MATERIAL: SEE NOTES FINISH: SEE NOTES DRAWN BY: TAN NGUYEN 08-12-2014 CHECKED BY: ENGR APPR: MFG APPR: QA APPR: | | TITLE: SCREW, M1.4 X 3.05mm LG SIZE: B+ DWG NUMBER: B01-000614 SCALE: 12:1 | |
| | THIRD ANGLE | | REV: 1 | | SHEET 7 OF 8 | |
| | | | | | | |
| | | | | | | |

- PROPRIETARY INFORMATION -
NO USE OR REPRODUCTION MAY BE MADE OF
THIS DOCUMENT WITHOUT EXPRESS WRITTEN
PERMISSION OF NEOCONIX.

| REVISIONS | | | | |
|-----------|---------|----------------------------|--------------|-----------|
| REV. | ECN NO. | DESCRIPTION | DATE | APPROVED |
| A | 0000 | INITIAL PRODUCTION RELEASE | SEP. 10 2013 | Liyin Lee |
| B | 0000 | Change nut length | SEP. 23 2013 | Liyin Lee |
| C | 1106 | ADD NOTE # 4 | NOV. 19 2013 | TAN |



NOTES:

- MATERIAL: FREE-MACHINING BRONZE, UNS C54400 H04 TEMPER (UTS 450 MPa MIN)
- PART TO BE FREE OF BURRS AND SHARP EDGES.
- HI-TEMP POLYIMIDE TAPE, 260 °C [500 °F] MINIMUM
TOTAL THICKNESS .025-.076 MM [.001-.003 IN]
ADHESION TO STEEL 27 N/100 MM [25 OZ/IN] MINIMUM, PER ASTM D 3330 (OR EQUIV)
- PLATE: SULFAMATE NICKEL, 3.5 +/-2.0 um PER ASTM B689-97 (2008),
+ BRIGHT TIN, 5.0 +/-2.0 um PER ASTM B545-97 (2009).

PART NUMBER: B01-000581

| | | | |
|---|--|---|---|
| <p>715 N. PASTORIA AVE. SUNNYVALE, CA 94085 TEL: 408-530-9393 FAX: 408-530-9372</p> | <p>DIMENSIONS ARE IN MM [INCH]</p> <p>.X ± 0.13 [.005] .XX ± 0.08 [.003] .XXX ± 0.025 [.001]</p> <p>ANGLE: NO DEC ± 1° .X ± 0.5° .XX ± 0.25°</p> | <p>MATERIAL: SEE NOTES</p> <p>FINISH: SEE NOTES</p> | <p>TITLE: NUT, M1.4 X 1.15mm LG</p> |
| | <p>DRAWN BY: TAN NGUYEN 08-19-2013</p> <p>CHECKED BY: W MAYNARD 08-19-2013</p> <p>ENGR APPR:</p> <p>MFG APPR:</p> <p>QA APPR:</p> | <p>SIZE: B+</p> | <p>REV: C</p> |
| | <p>THIRD ANGLE</p> | <p>DWG NUMBER: B01-000581</p> | <p>SCALE: 12:1</p> |
| | <p>SHEET 8 OF 8</p> | | |