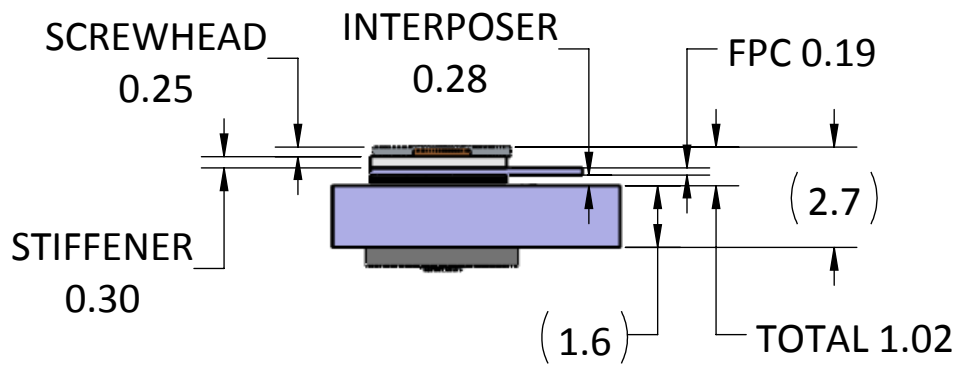
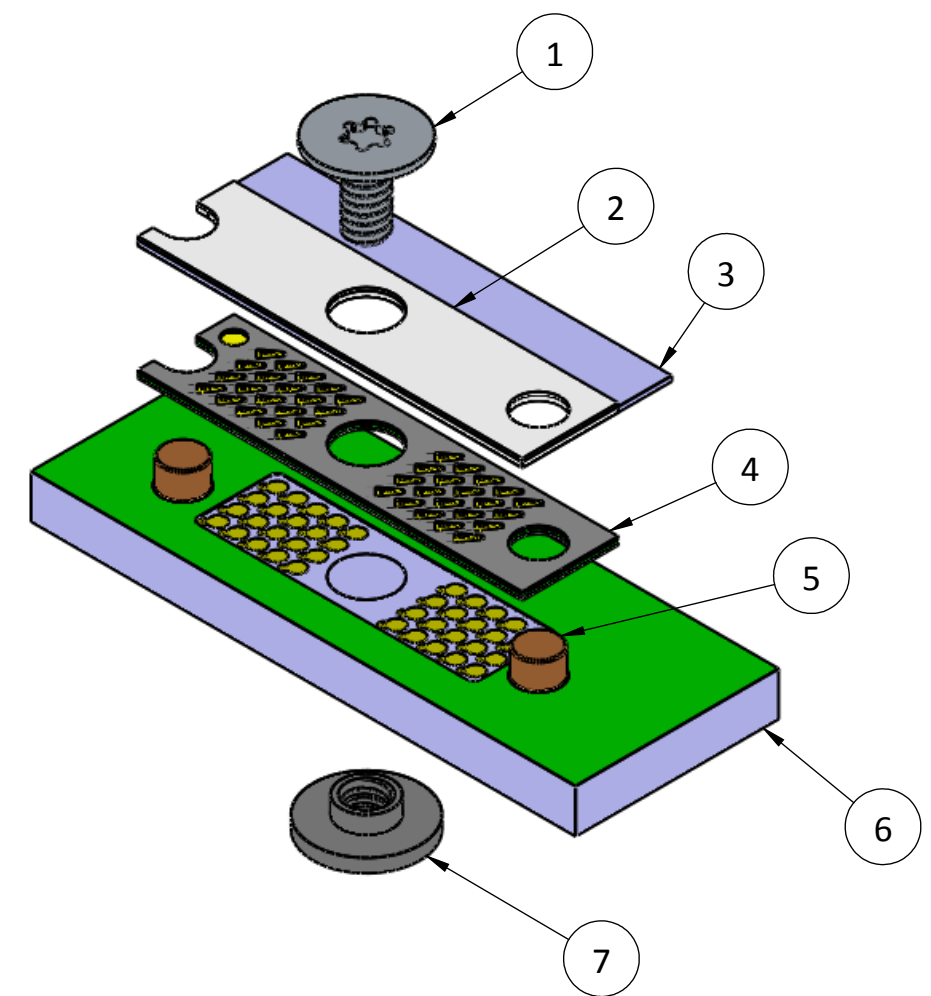
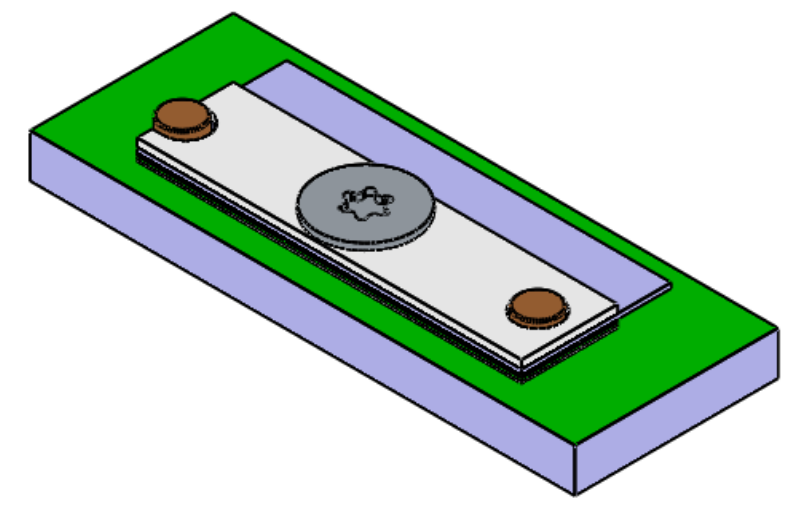
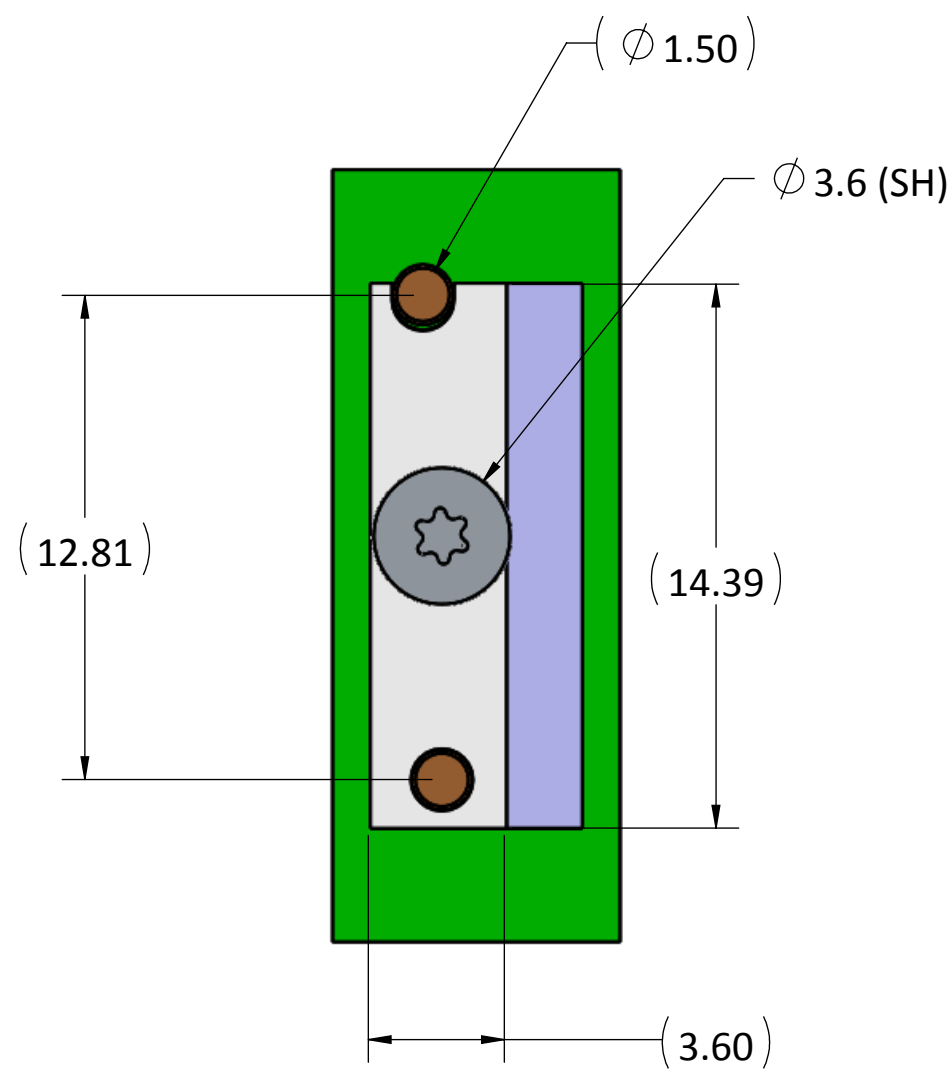


- PROPRIETARY INFORMATION -  
NO USE OR REPRODUCTION MAY BE MADE OF  
THIS DOCUMENT WITHOUT EXPRESS WRITTEN  
PERMISSION OF NEOCONIX.

| ITEM NO. | DESCRIPTION            | Default/QTY |
|----------|------------------------|-------------|
| 1        | SCREW, WAFERHEAD, M1.4 | 1           |
| 2        | STIFFENER              | 1           |
| 3        | FLEX                   | 1           |
| 4        | INTERPOSER             | 1           |
| 5        | ALIGNMENT PIN          | 2           |
| 6        | PCB                    | 1           |
| 7        | NUT, CUSTOM SMT, M1.4  | 1           |



|   |  |  |  |
|---|--|--|--|
| <p>2355-C PARAGON DRIVE.<br/>SAN JOSE, CA 95131<br/>TEL: 408-530-9393 FAX: 408-530-9383</p> | <p>DIMENSIONS ARE IN<br/>MM [INCH]</p> <p>.X ±<br/>.XX ±<br/>.XXX ±</p> <p>ANGLE: NO DEC ±<br/>.X ±<br/>.XX ±</p> <p>THIRD ANGLE</p> | <p>MATERIAL:</p> <p>FINISH:</p> <p>DRAWN BY: JASON WU 03-19-2015</p> <p>CHECKED BY:</p> <p>ENGR APPR:</p> <p>MFG APPR:</p> <p>QA APPR:</p> | <p>TITLE:</p> <p>INTERPOSER, SCREW-DOWN<br/>40 POSITIONS LGA-LGA</p> <p>DWG NUMBER: LPM-040A-ASY</p> <p>SCALE: 5:1</p> |
|   | <p>SIZE: B+</p>  | <p>REV: 1</p>  | <p>SHEET 1 OF 8</p>  |
|   | <p>REVISIONS:</p>  |  |  |
|   | <p>DATE: 03-19-2015</p>  |  |  |

- PROPRIETARY INFORMATION -  
NO USE OR REPRODUCTION MAY BE MADE OF  
THIS DOCUMENT WITHOUT EXPRESS WRITTEN  
PERMISSION OF NEOCONIX.

| REVISIONS |      |                 |            |          |
|-----------|------|-----------------|------------|----------|
| REV       | ECO  | DESCRIPTION     | DATE       | DRAWN BY |
| 1         | 0000 | INITIAL RELEASE | 03-19-2015 | Jason    |

4 40 POSITIONS TOP  
40 POSITIONS BOTTOM

$\oplus \ominus \varnothing 0.203$  A B C

PITCH  
0.7424

PITCH  
0.7424

DETAIL B  
SCALE 20 : 1

**COMPRESSED,  
ON ALIGNMENT PINS**

(PIN 1 MARK  $\varnothing 0.75$   
TOP SIDE ONLY)

13.11±0.13

12.675

12.36

11.003

6.437

1.352

0

1.28±0.13

$\varnothing 1.600 \pm 0.050$

B

1.71±0.13

1.227

0

0.500

1.000

1.89±0.13

0.28±0.04

**COMPRESSED**

1.600±0.076

$\oplus \ominus \varnothing 0.152$  (M) A B

C

$\varnothing 2.100 \pm 0.050$

$\oplus \ominus \varnothing 0.152$  (M) A B C

0.18±0.08  
BOTH SIDES

0.30

**UNCOMPRESSED**

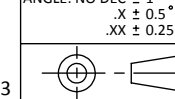
NOTES (UNLESS OTHERWISE SPECIFIED):

1. INTERPRET DRAWING PER ASME Y14.5-94.
2. HALOGEN-FREE PER IPC-4101B.
3. COMPLIANT WITH RoHS DIRECTIVE 2011/65/EU.
4. CENTER MARKS OF CONTACT POSITIONS ARE FOR COMPRESSED STATE.



2355-C PARAGON DRIVE.  
SAN JOSE, CA 95131  
TEL: 408-530-9393 FAX: 408-530-9383

DIMENSIONS ARE IN  
MM [INCH]  
.X ± 0.13 [.005]  
.XX ± 0.08 [.003]  
.XXX ± 0.025 [.001]  
ANGLE: NO DEC ± 1°  
.X ± 0.5°  
.XX ± 0.25°

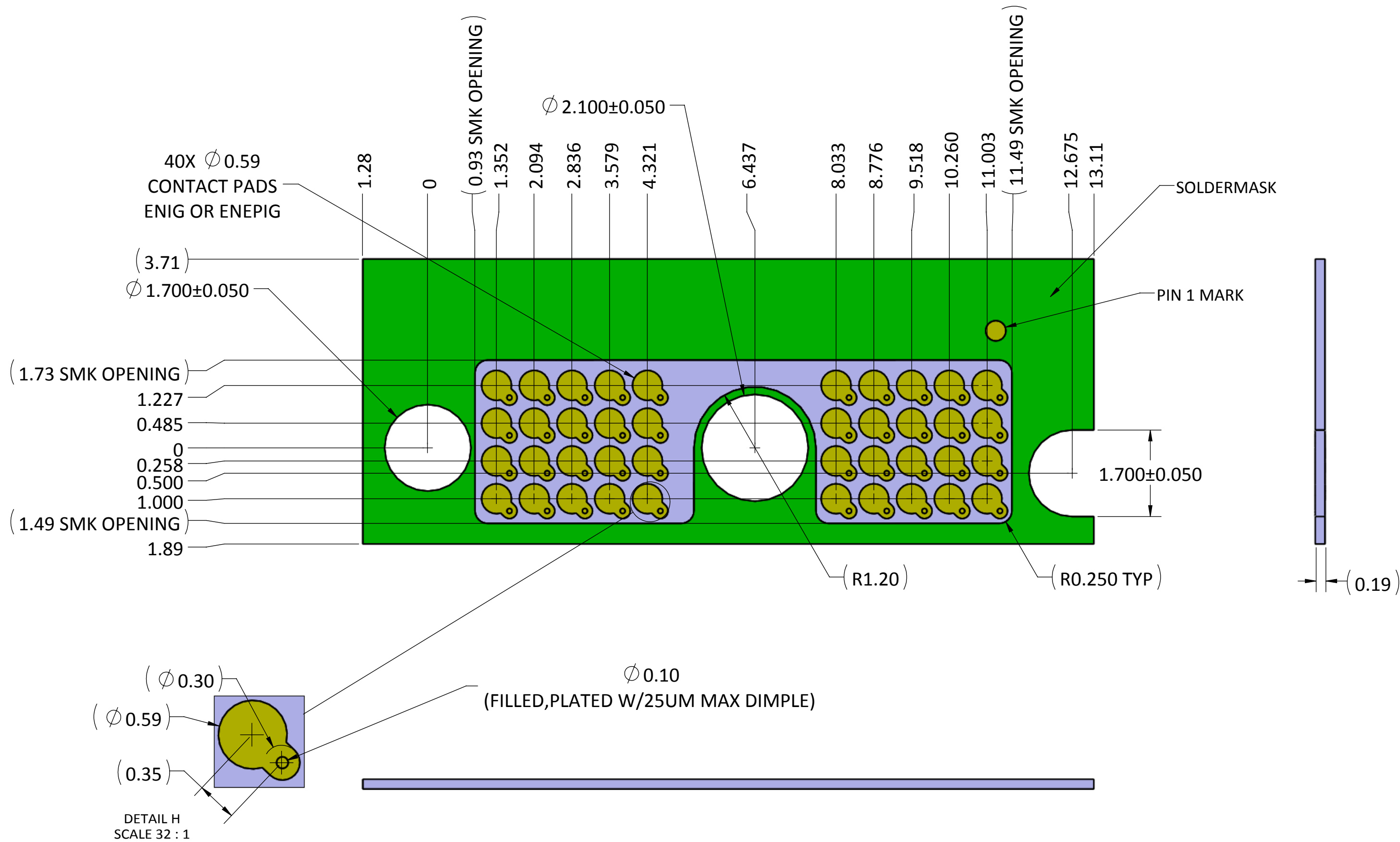


MATERIAL: SEE NOTES  
FINISH: SEE NOTES  
DRAWN BY: Jason Wu 03-19-2015  
CHECKED BY: Woody Maynard 03-19-2015  
ENGR APPR:  
MFG APPR:  
QA APPR:

TITLE:  
INTERPOSER, SCREW-DOWN  
40 POSITIONS LGA-LGA  
DWG NUMBER:  
LPM-040A  
REV  
1  
SCALE: 10:1 SHEET 2 OF 8

- PROPRIETARY INFORMATION -  
NO USE OR REPRODUCTION MAY BE MADE OF  
THIS DOCUMENT WITHOUT EXPRESS WRITTEN  
PERMISSION OF NEOCONIX.

| REVISIONS |      |                 |            |          |
|-----------|------|-----------------|------------|----------|
| REV       | ECN  | DESCRIPTION     | DATE       | APPROVED |
| 1         | 0000 | INITIAL RELEASE | 03-19-2015 | JASON    |



**neconix**  
2355-C PARAGON DRIVE.  
SAN JOSE, CA 95131  
TEL: 408-530-9393 FAX: 408-530-9383

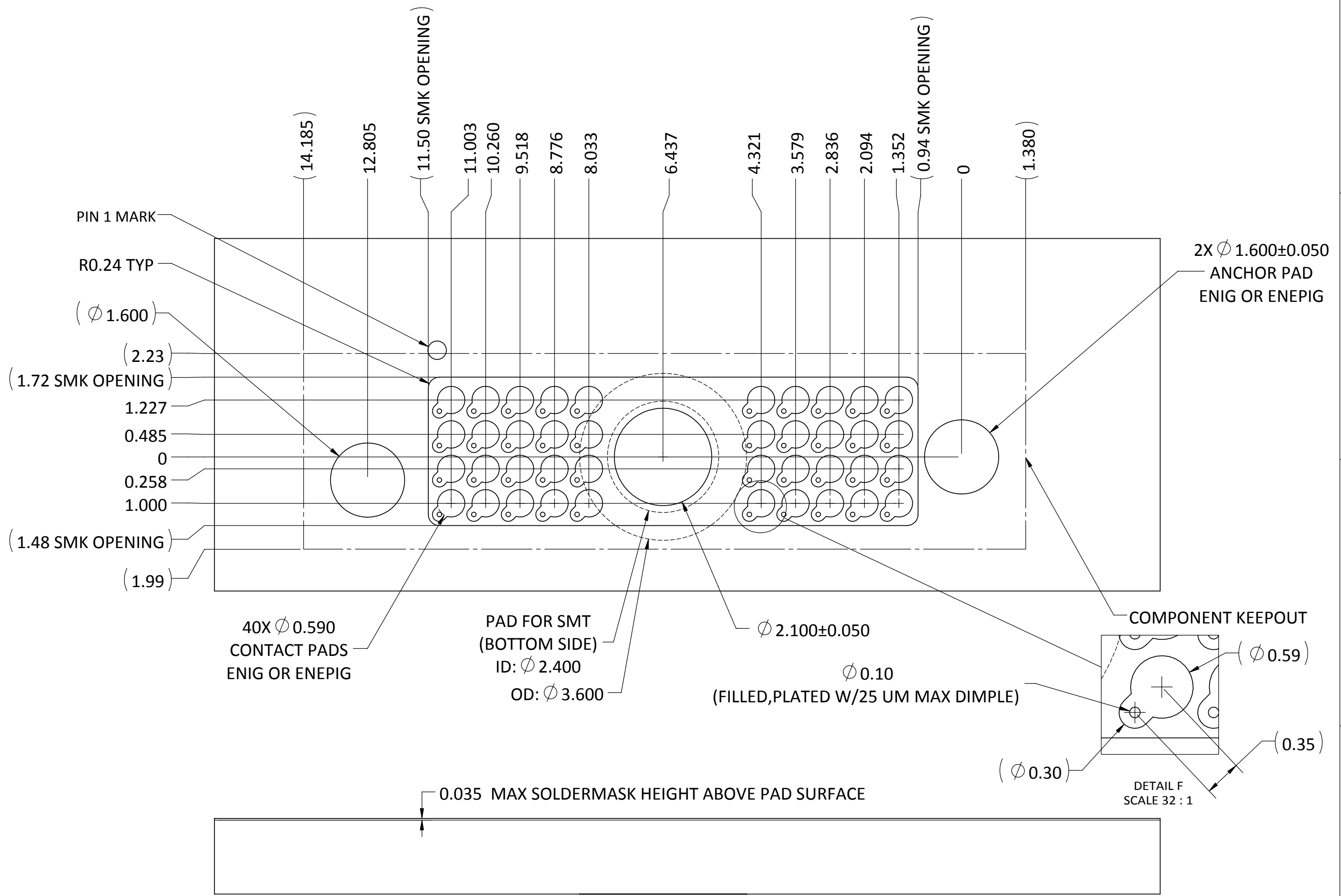
DIMENSIONS ARE IN  
MM [INCH]  
.X  $\pm$  0.13 [.005]  
.XX  $\pm$  0.08 [.003]  
.XXX  $\pm$  0.025 [.001]  
ANGLE: NO DEC  $\pm$  1°  
.X  $\pm$  0.5°  
.XX  $\pm$  0.25°  
THIRD ANGLE

|                    |            |
|--------------------|------------|
| MATERIAL:          |            |
| FINISH:            |            |
| DRAWN BY: JASON WU | 03-10-2015 |
| CHECKED BY:        |            |
| ENGR APPR:         |            |
| MFG APPR:          |            |
| QA APPR:           |            |

|  |                             |
|--|-----------------------------|
| TITLE:<br><b>RECOMMENDED FPC LAYOUT<br/>40 POSITIONS LGA-LGA</b> |                             |
| SIZE: B+   | DWG NUMBER:<br>LPM-040A-FPC |
| SCALE: 10:1  | REV: <b>1</b>               |
| SHEET 3 OF 8   |                             |

- PROPRIETARY INFORMATION -  
NO USE OR REPRODUCTION MAY BE MADE OF  
THIS DOCUMENT WITHOUT EXPRESS WRITTEN  
PERMISSION OF NEOCONIX.

| REVISIONS |      |                 |            |          |
|-----------|------|-----------------|------------|----------|
| REV       | ECN  | DESCRIPTION     | DATE       | APPROVED |
| 1         | 0000 | INITIAL RELEASE | 03-19-2015 | JASON    |



2355-C PARAGON DRIVE.  
 SAN JOSE, CA 95131  
 TEL: 408-530-9393 FAX: 408-530-9383

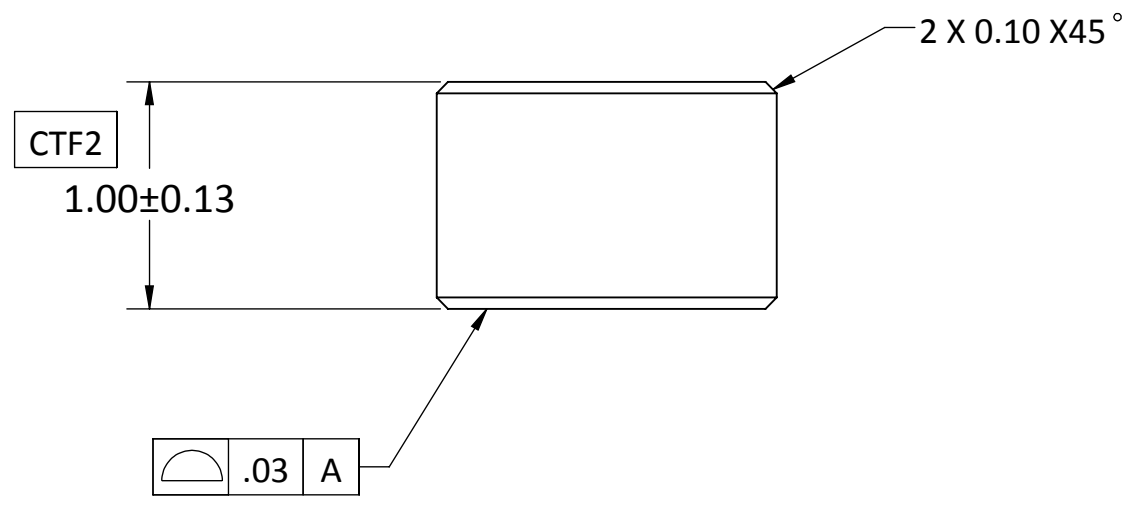
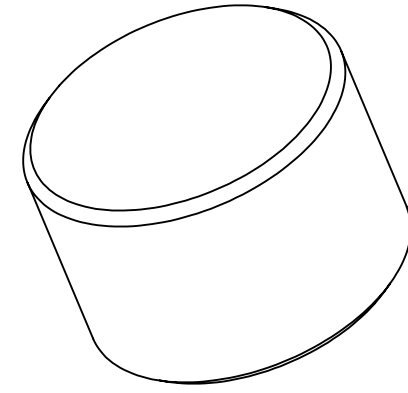
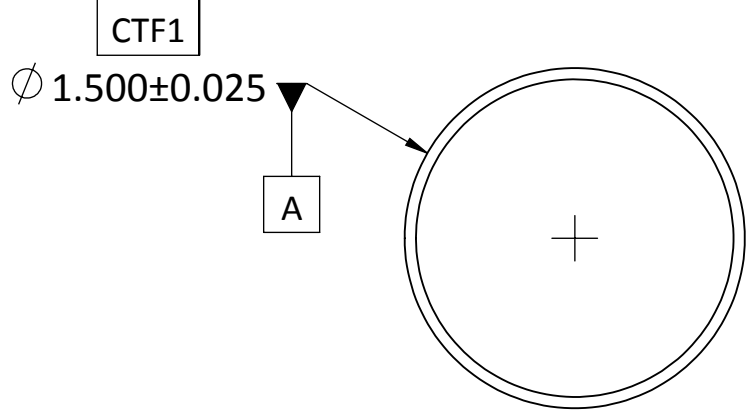
DIMENSIONS ARE IN  
 MM [INCH]  
 .X ± 0.13 [.005]  
 .XX ± 0.08 [.003]  
 .XXX ± 0.025 [.001]  
 ANGLE: NO DEC ± 1°  
 .X ± 0.5°  
 .XX ± 0.25°  
  
 THIRD ANGLE

MATERIAL:  
 FINISH:  
 DRAWN BY: JASON WU 03-19-2015  
 CHECKED BY:  
 ENGR APPR:  
 MFG APPR:  
 QA APPR:

TITLE:  
**RECOMMENDED PCB LAYOUT**  
 40 POSITIONS  
 DWG NUMBER:  
 LPM-040A-PCB  
 SCALE: 10:1 SHEET 4 OF 8  
 REV 1

- PROPRIETARY INFORMATION -  
NO USE OR REPRODUCTION MAY BE MADE OF  
THIS DOCUMENT WITHOUT EXPRESS WRITTEN  
PERMISSION OF NEOCONIX.

| REVISIONS |   |          |            |
|-----------|---|----------|------------|
| REV.      | DESCRIPTION                               | DATE     | DESIGN BY: |
| 1         | INITIAL                                   | 09/09/13 | TAN        |
| 2         | REVISE THE PIN LENGHT FROM 0.75 TO 1.0 mm | 10/01/13 | TAN        |
| 3         | ADD CTF TO THE DIAMETER                   | 10/28/13 | TAN        |
| 4         | ECN 1120 - ADD CTF TO LENGHT              | 01/23/14 | TAN        |



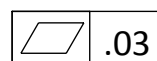
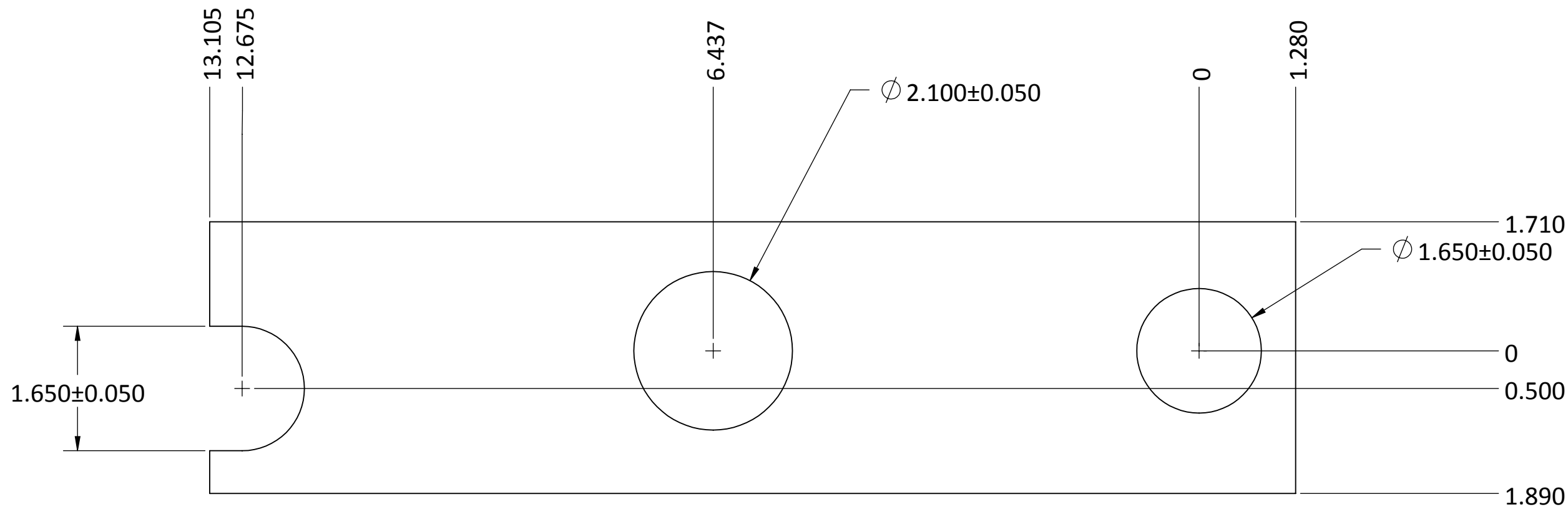
NOTES:(UNLESS OTHERWISE SPECIFIED)

- MATERIAL: C54400 - PHOSPHOR BRONZE.
- PLATE:SULFAMATE NICKEL, 3.5 +/-2.0 um PER ASTM B689-97(2008), + BRIGHT TIN, 5.0+/-2.0 um PER ASTM B545-97(2009).

|  |  |  |   |
|--|--|--|---|
| <br>715 N. PASTORIA AVE.<br>SUNNYVALE, CA 94085<br>TEL: 408-530-9393 FAX: 408-530-9372 | DIMENSIONS ARE IN<br>MM [INCH]<br>.X ± 0.20 [.008]<br>.XX ± 0.10 [.004]<br>.XXX ± 0.025 [.001]<br>ANGLE: NO DEC ± 1°<br>.X ± 0.5°<br>.XX ± 0.25° | MATERIAL: SEE NOTES<br>FINISH: SEE NOTES<br>DRAWN BY: TAN NGUYEN 09/09/2013<br>CHECKED BY: W MAYNARD 09/09/2013<br>ENGR APPR:<br>MFG APPR:<br>QA APPR: | TITLE:<br><b>ALIGNMENT PIN</b><br><b>(<math>\phi 1.50</math> X 1.0 mm LONG)</b><br>DWG NUMBER:<br><b>B01-000589</b> |
|  | THIRD ANGLE  | SIZE: B+   | REV: 4  |
|  | SCALE: 12:1  |  | SHEET 5 OF 8  |
|  | SHEET 5 OF 8   |  |   |

- PROPRIETARY INFORMATION -  
NO USE OR REPRODUCTION MAY BE MADE OF  
THIS DOCUMENT WITHOUT EXPRESS WRITTEN  
PERMISSION OF NEOCONIX.

| REVISIONS |      |                 |            |          |
|-----------|------|-----------------|------------|----------|
| REV       | ECO  | DESCRIPTION     | DATE       | APPROVED |
| 0         | 0000 | INITIAL RELEASE | 03-19-2015 | JASON    |



0.30±0.03

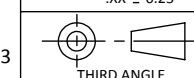
NOTES (UNLESS OTHERWISE SPECIFIED):

1. INTERPRET DRAWING PER ASME Y14.5-94.



2355-C PARAGON DRIVE.  
SAN JOSE, CA 95131  
TEL: 408-530-9393 FAX: 408-530-9383

DIMENSIONS ARE IN  
MM [INCH]  
.X ± 0.13 [.005]  
.XX ± 0.08 [.003]  
.XXX ± 0.025 [.001]  
ANGLE: NO DEC ± 1°  
.X ± 0.5°  
.XX ± 0.25°

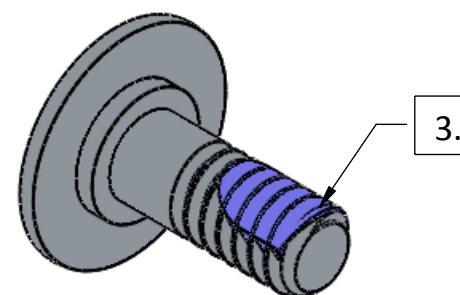
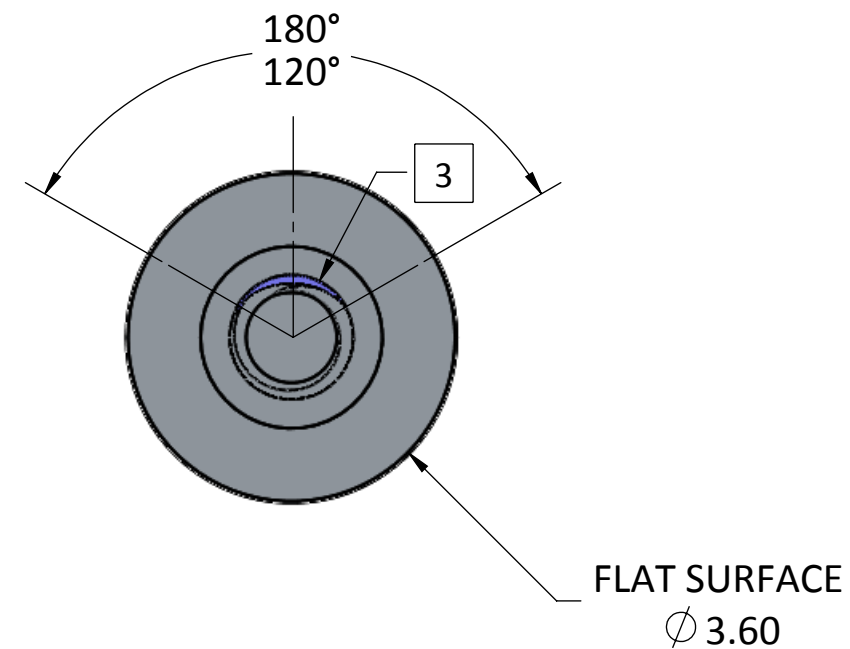
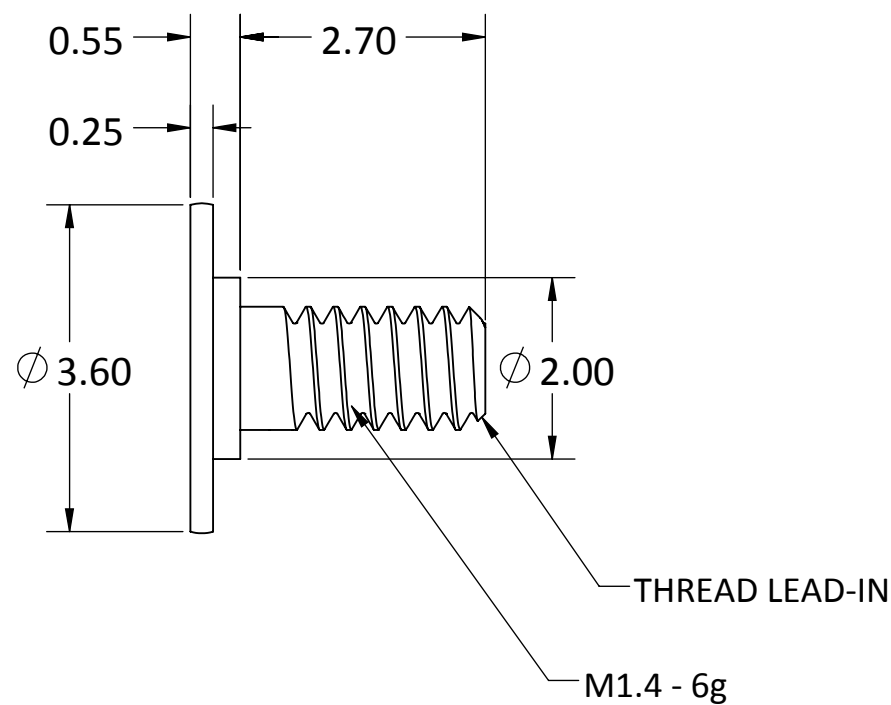
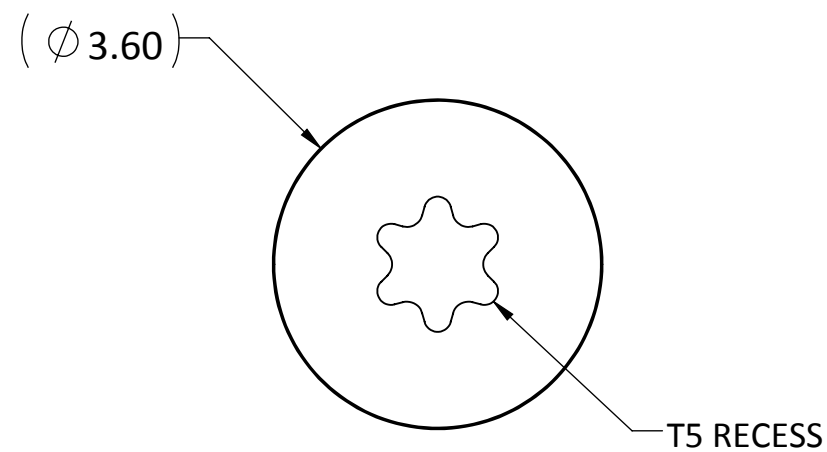


|             |                     |
|-------------|---------------------|
| MATERIAL:   | 301 SS FULL HARD    |
| FINISH:     | SEE NOTES           |
| DRAWN BY:   | JASON WU 03-19-2015 |
| CHECKED BY: |                     |
| ENGR APPR:  |                     |
| MFG APPR:   |                     |
| QA APPR:    |                     |

|        |              |                      |        |
|--------|--------------|----------------------|--------|
| TITLE: |              | STIFFENER, MB 40 POS |        |
| SIZE   | DWG NUMBER:  | REV                  |        |
| B+     | LPM-040A-STF | 1                    |        |
| SCALE: | 10:1         | SHEET                | 6 OF 8 |

- PROPRIETARY INFORMATION -  
NO USE OR REPRODUCTION MAY BE MADE OF  
THIS DOCUMENT WITHOUT EXPRESS WRITTEN  
PERMISSION OF NEOCONIX.

| REVISIONS |      |                            |            |          |
|-----------|------|----------------------------|------------|----------|
| ZONE      | REV. | DESCRIPTION                | DATE       | APPROVED |
|           | 1    | INITIAL PRODUCTION RELEASE | 08-12-2014 | TAN      |



NOTES:

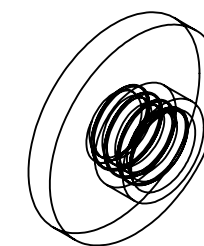
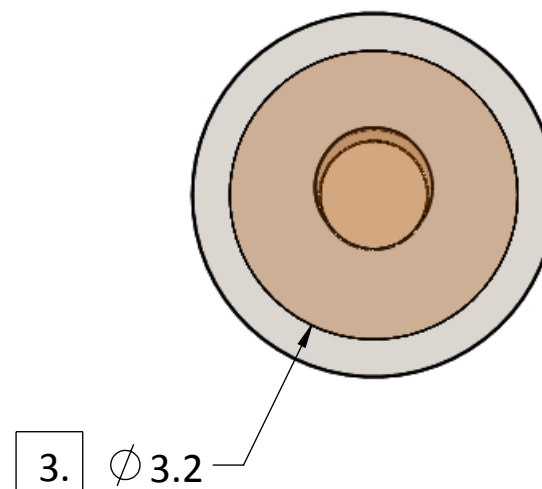
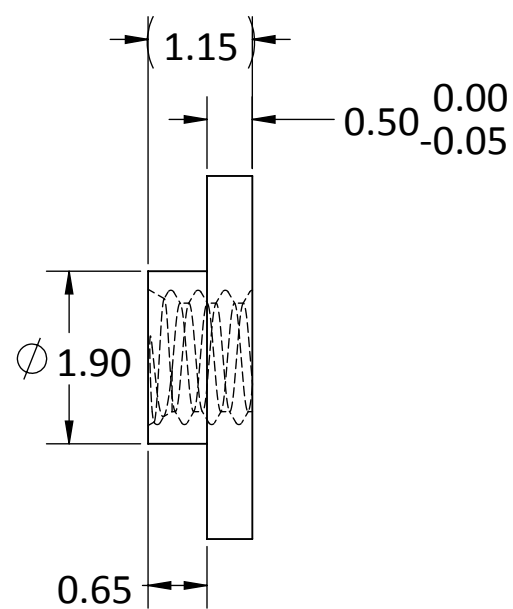
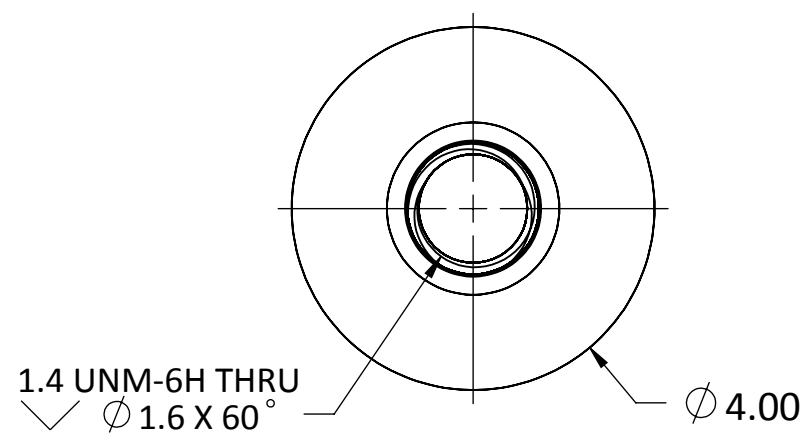
1. MATERIAL: AISI 1018
2. FINISH: BRIGHT NICKEL PER ASTM B689-97, TYPE 2, CLASS 5
3. THREADLOCK: NYLOK-BLUE, FIRST 4-6 WHOLE THREADS, 120°-180° COVERAGE.
4. SCREW FIT TOLERANCE DOES NOT INCLUDE THREADLOCK.
5. PART TO BE FREE OF BURRS AND SHARP EDGES.

**PART NUMBER: B01-000614**

|   |  |  |                    |   |                    |                                   |
|---|--|--|--------------------|---|--------------------|-----------------------------------|
| <p>2355-C PARAGON DRIVE.<br/>SAN JOSE, CA 95131<br/>TEL: 408-530-9393 FAX: 408-530-9383</p> | <p>DIMENSIONS ARE IN<br/>MM [INCH]<br/>.X ± 0.13 [.005]<br/>.XX ± 0.08 [.003]<br/>.XXX ± 0.025 [.001]<br/>ANGLE: NO DEC ± 1°<br/>.X ± 0.5°<br/>.XX ± 0.25°</p> | <p>MATERIAL: SEE NOTES<br/>FINISH: SEE NOTES</p> |                    | <p>TITLE:<br/>SCREW, M1.4 X 3.05mm LG</p> |                    |                                   |
|   | <p>THIRD ANGLE</p>   | <p>DRAWN BY: TAN NGUYEN 08-12-2014</p>           | <p>CHECKED BY:</p> | <p>ENGR APPR:</p>                         | <p>SIZE<br/>B+</p> | <p>DWG NUMBER:<br/>B01-000614</p> |
|   | <p>MFG APPR:</p>   | <p>QA APPR:</p>                                  | <p>SCALE: 12:1</p> | <p>SHEET 7 OF 8</p>                       | <p>REV<br/>1</p>   | <p>REV<br/>1</p>                  |
|   | <p>SCALE: 12:1 SHEET 7 OF 8</p>  |  |                    |   |                    |                                   |

- PROPRIETARY INFORMATION -  
NO USE OR REPRODUCTION MAY BE MADE OF  
THIS DOCUMENT WITHOUT EXPRESS WRITTEN  
PERMISSION OF NEOCONIX.

| REVISIONS |         |                            |              |           |
|-----------|---------|----------------------------|--------------|-----------|
| REV.      | ECN NO. | DESCRIPTION                | DATE         | APPROVED  |
| A         | 0000    | INITIAL PRODUCTION RELEASE | SEP. 10 2013 | Liyin Lee |
| B         | 0000    | Change nut length          | SEP. 23 2013 | Liyin Lee |
| C         | 1106    | ADD NOTE # 4               | NOV. 19 2013 | TAN       |



NOTES:

- MATERIAL: FREE-MACHINING BRONZE, UNS C54400 H04 TEMPER (UTS 450 MPa MIN)
- PART TO BE FREE OF BURRS AND SHARP EDGES.
- HI-TEMP POLYIMIDE TAPE, 260 °C [500 °F] MINIMUM  
TOTAL THICKNESS .025-.076 MM [.001-.003 IN]  
ADHESION TO STEEL 27 N/100 MM [25 OZ/IN] MINIMUM, PER ASTM D 3330 (OR EQUIV)
- PLATE: SULFAMATE NICKEL, 3.5 +/-2.0 um PER ASTM B689-97 (2008),  
+ BRIGHT TIN, 5.0 +/-2.0 um PER ASTM B545-97 (2009).

PART NUMBER: B01-000581

|   |  |  |  |  |                                 |  |
|---|--|--|--|--|---------------------------------|--|
| <p>715 N. PASTORIA AVE.<br/>SUNNYVALE, CA 94085<br/>TEL: 408-530-9393 FAX: 408-530-9372</p> | DIMENSIONS ARE IN<br>MM [INCH]<br>.X ± 0.13 [.005]<br>.XX ± 0.08 [.003]<br>.XXX ± 0.025 [.001]<br>ANGLE: NO DEC ± 1°<br>.X ± 0.5°<br>.XX ± 0.25° |  | MATERIAL: SEE NOTES<br>FINISH: SEE NOTES |  | TITLE:<br>NUT, M1.4 X 1.15mm LG |  |
|   | DRAWN BY: TAN NGUYEN 08-19-2013  |  | CHECKED BY: W MAYNARD 08-19-2013         |  | SIZE: B+                        |  |
|   | ENGR APPR:   |  | MFG APPR:                                |  | DWG NUMBER: B01-000581          |  |
|   | QA APPR:   |  | SCALE: 12:1                              |  | SHEET 8 OF 8                    |  |